

**The National Statistical Committee
of the Kyrgyz Republic**

**FOOD SECURITY AND POVERTY
INFORMATION BULLETIN OF THE
KYRGYZ REPUBLIC**

1 / 2012

Bishkek 2012

**The National Statistical Committee
of the Kyrgyz Republic**

**FOOD SECURITY AND POVERTY
INFORMATION BULLETIN OF THE
KYRGYZ REPUBLIC**

1 / 2012

Bishkek 2012

Food security and poverty information bulletin of the Kyrgyz Republic

Editorial board:

- Chairman - A. Osmonaliev
- Members: - D. Baijumanov
- N. Tulegabylov
- L. Tekeeva
- A. Satybaldiev
- K. Koichumanova
- R. Plesovskih
- C. Turdubaeva

For information regarding this publication please contact:

374, Frunze street, Bishkek city;
phone: 996 (312) 324655, 325557;
fax: 66-01-38; web-site: www.stat.kg;
e-mail: nsc_mail@stat.kg;
The National Statistical Committee of the Kyrgyz Republic;
Sampling Survey Department.

Food security and poverty information bulletin of the Kyrgyz Republic contains the analysis of the situation on food provision in the country for the 1st quarter of 2012. The bulletin combines and systematizes materials on food availability, its production, indicators of access to food, data on its consumption per capita.

Annexes of the bulletin contain review of hydro-meteorological conditions on the territory of the Kyrgyz Republic for the 1st quarter of 2012, information on average retail prices for food for the 1st quarter of 2012, estimates on food balance for the 1st quarter of 2012 by basic foodstuff, nutrition balance in kind of energy value by results of integrated survey of 5016 households for 9 months of 2010-2011, as well as indicators of food security and child protection.

The publication is quarterly.

Copies: 120 in Russian and 35 in English;

The publication is also available in electronic format

While using statistical data in mass media and scientific papers, disseminating these data through information nets, hard copies, CD discs and other users have to refer to their source (article 17 of the Law on State Statistics).

Conventional signs:

- Event is not existing;
- ... Data are not available;
- 0,0 Negligible and insignificant value.

In separate cases insignificant discrepancies between total and sum of components are explained by rounding.

Contents

Overview	4
Introduction	5
Section I. Socio-Economic Indicators	6
1.1. Gross Domestic Product	6
1.2. Prices and Tariff Indices	6
1.3. Labour Market	8
Section II. Availability of Food	9
2. Agriculture	9
2.1. Crop Production	9
2.2. Livestock Production	11
2.3. Producers Price Index of Agricultural Production	12
2.4. Trade of Basic Foodstuff	12
2.5. Availability of Food Per Capita	13
Section III. Access to Food	14
3.1. Consumer Prices Analysis	14
3.2. Money Income of Population	15
Methodological explanations	17
List of Abbreviations	18
Annex:	
1. Review of Hydro-meteorological Conditions on the territory of the Kyrgyz Republic in the 1st quarter of 2012	19
2. Average Consumer Prices for Food (by regions, 1st quarter of 2011-2012)	20
3. Food Balance	23
4. Food Balance expressed in nutritional values and compared to calculated daily needs based on surveys of daily intake and calculated daily needs based on recurrent nutritional surveillance by Socio-Demographic Groups of Population and Regions (9 months of 2010-2011)	25
5. Food Balance expressed in nutritional values and compared to calculated daily needs based on surveys of daily intake and calculated daily needs based on recurrent nutritional surveillance by Quintile Groups and Regions (9 months of 2010-2011)	33
6. Household Food Balance expressed in economic terms, based on results of Living Standard Surveys by Income Quintile Groups and Regions (9 months of 2010-2011)	38
7. Household Food Balance expressed in economic terms, based on results of Living Standard Surveys by Expenditure Quintile groups and Regions (9 months of 2010-2011)	44
8. Food Security Indicators of the Kyrgyz Republic	50
9. Child Protection Indicators	56

OVERVIEW

According to preliminary estimates, in January-March 2012, Gross Domestic Product (GDP) calculated by production method was valued at KGS 50751,6 million and in comparison with January-March 2011 GDP has increased by 6.8%.

Page 6

In March 2012, Consumer Price Index characterizing inflation rate, in comparison with the previous month, has made up 100.0% and in comparison with December of previous year – 100.9%.

Page 7

In January-March 2012, gross output of agriculture, hunting and forestry was valued at KGS 17457,9 million. Physical volume index has made up 101,0%.

Page 9

As of the beginning of April 2012, totally by country, spring crops were planted on 4.1 thsd. hectares, which made up 16.5% to their sown area to the corresponding date of the previous year.

Page 9

In January-March 2012, producer prices for sold agricultural products have increased by 9.6 percent in comparison with the corresponding period of the previous year.

Page 12

Introduction

Pursuant the Rome Declaration, adopted on November 17, 1996 during the World Food Summit, the Kyrgyz Republic as a member of the international community assumed responsibility to "...conduct a policy aimed to the alleviation of poverty and inequality, provision of physical and economical access to all people and at all times to sufficiently dietary adequate food and as well as to its use".

In 1999, the Government of the Kyrgyz Republic, in cooperation with the European Commission in the Kyrgyz Republic has developed and adopted a National Food Security Policy. The policy (and EC funding under the EC-Food Security Programme) sustains reforms in food security related to such sectors as agriculture and social protection.

Food security is a physical availability of a foodstuff in the required quantity, possibility of access to indicated foodstuff (the products made in households, and acquired through the market, gifts and other sources) and consumption of foodstuff in that quantity which are necessary for maintenance of food needs.

Food and nutrition security presumes the availability of adequate food (in the context of quantity, quality, safety and social and cultural acceptability), provision of access and adequate consumption and digestion of such products by all persons at any time for an active and healthy life.

Food Availability: physical existence of quantitatively and qualitatively adequate and safety food items at any moment of time.

Access: all households and household members have sufficient resources to obtain appropriate food (through production, purchase or donation).

Stability: continuous provision of availability, access and use of food. If there is no stability, individuals will suffer from chronic or transitory food insecurity

The aim of the KR Food Security and Poverty Information Bulletin is to provide up-to-date and reliable information and analysis of the current food security situation in the country.

The publication of information bulletin on food security was prepared by the National Statistical Committee of the Kyrgyz Republic. The publication contains information provided by State Agency on Hydro Meteorology of the Ministry of Emergency of the Kyrgyz Republic. The bulletin was financed by the European Commission in the Kyrgyz Republic and technical support was provided by UN FAO.

Section I. Socio-Economic Indicators

The below socio-economic indicators characterizes the general situation of economy in the country for the analysis of food security situation.

1.1. Gross Domestic Product

Gross domestic product (GDP) calculated by *production method*, in January-March 2012, according to preliminary estimation, has been valued at 50751,6 million KG Soms and has decreased by 6,8% in comparison with January-March 2011. Real growth rate of GDP excluding «Kumtor» mining company made up 4,5%. The volume of GDP calculated per capita made up 9,6 thsd. soms and in comparison with the previous year has decreased by 8,1 %.

Table 1: Main socio-economic indicators

	2011	I st quarter	
		2011	2012 ¹
Average annual number of present population, mln. people	5,26	5,2	5,3
Nominal GDP, mln.soms	273107,8	47660,0	50751,6
in % to GDP:			
agriculture	18,0	8,5	11,4
industry and construction	25,6	32,2	23,1
services	44,9	47,5	50,5
GDP per capita, thsd. soms	52,0	9,1	9,6
GDP growth rate, %	105,7	100,6	93,2
CPI ²	116,6	120,3	102,1
CPI for foodstuff and nonalcoholic beverages (soft drinks) ²	125,0	132,7	95,5
CPI for services ²	111,6	111,9	110,1
Number of employed population thsd. people ⁶	-	-	-
Average monthly wage and salary ³ , soms	9352	7350	10127
Import, mln. US dollars ⁴	4261,2	761,6	1065,4
Export, mln. US dollars ⁴	2246,4	441,6	388,4
Exchange rate of KG som to ⁵ :			
US dollars	46,14	47,39	46,72
Euro	64,35	64,73	61,26
RUR	1,58	1,62	1,55
KZT	0,31	0,32	0,32
Subsistence level, soms	4390,02	4411,26	4229,49

¹ Data are preliminary.

² In % to the corresponding period of the previous year.

³ Excluding small enterprises.

⁴ Including volumes of external trade implemented by individuals.

⁵ According to data of the National Bank of the Kyrgyz Republic.

⁶ Annual data.

1.2. Prices and Tariff Indices

In March 2012, *Consumer Price Index (CPI)* characterizing inflation rate, in comparison with the previous month has made up 100,0 %, and in comparison with December of the previous year - 100,9 %.

In March 2012, prices for *foodstuff and nonalcoholic beverages (soft drinks)* in comparison with the previous month have decreased by 0,6 %. At the same time, prices for all components of *foodstuff and nonalcoholic beverages* except fish, cheese, fruits and vegetables, granulated sugar, mineral water and beverages have decreased.

Table 2: Prices index for main types of food products
(as a % to the previous month)

	Wheat flour		Bread	Ashcake	Beef	Mutton	Milk unbottled	Eggs	Sunflower oil
	High quality	First grade							
January	98,0	94,9	99,4	99,7	102,0	100,8	103,7	101,9	100,8
February	99,2	96,9	99,4	99,7	99,5	100,1	101,5	98,2	99,0
March	99,4	98,7	99,3	99,6	97,6	99,2	97,9	99,0	100,1
I st quarter ¹	96,5	90,8	98,1	99,0	99,0	100,2	103,1	98,9	99,8

¹Cumulative total for three months of the quarter.

In March 2012, in comparison with the previous month, prices for fresh vegetables have increased by 4,1%, fresh fruits - by 0,8 %.

Table 3: Prices index for selected types of fruits and vegetables
(as a % to the previous month)

	Carrot	Onion	Cabbage	Beet	Pumpkin	Cucumber	Apples	Potatoes
January	95,9	97,6	111,6	101,7	105,0	109,8	101,0	97,3
February	93,7	94,9	104,0	99,4	103,2	81,7	105,3	94,8
March	97,3	97,7	94,9	98,3	104,0	100,2	105,7	91,0
I st quarter ¹	87,4	90,5	110,3	99,3	112,6	89,9	112,4	84,0

¹Cumulative total for three months of the quarter.

In the I st quarter of 2012, prices for cereals (by 17,0%), flour (by 7,0%), vegetable oil (by 1,8%), bread (by 1,7%), pasta (by 1,5%), fresh meat and granulated sugar (by 0,2%) have decreased. Prices for foodstuff and nonalcoholic beverages have decreased totally by 0,6%.

Since the beginning of 2012, prices for animal fat have increased by 3,6%, fish – by 3,5%, fruits and vegetables - by 3,2%, rice - by 1,4%, dairy products, cheese and eggs - by 1,1%, nonalcoholic beverages - by 0,9%.

Table 4: Price index for selected groups of food products
(as a %)

	March 2012			January-March 2012
	to March 2011	to December 2011	to February 2012	to January-March 2011
Bakery products and grains	84,2	96,2	99,2	90,2
Meat	114,4	100,3	98,6	117,4
Fish	114,5	103,5	101,1	114,6
Dairy products, cheese and eggs	107,3	101,1	98,9	106,5
Including eggs	110,4	98,9	99,0	105,9
Oil and fat	101,2	99,0	99,6	103,5
Fruits	84,7	101,6	100,8	85,4
Vegetables	65,6	103,9	101,3	68,9
Sugar, jam, honey, chocolate and sweets	92,1	100,5	100,0	94,5

	March 2012			January-March 2012
	to March 2011	to December 2011	to February 2012	to January-March 2011
Nonalcoholic beverages (soft drinks)	106,7	100,9	98,8	109,4
Alcoholic beverages	109,8	101,2	100,0	109,5

Table 5: Average prices for selected representative goods
(som per kilo)

	Wheat flour		Bread	Ashcake	Mutton	Beef	Potato
	High quality	First grade					
January	31,16	25,53	36,11	42,89	293,00	312,65	14,65
February	30,87	24,74	35,90	42,76	293,34	311,02	13,93
March	30,67	24,41	35,63	42,55	291,12	303,26	12,66

According to preliminary data for January-March 2012, import of foodstuff has made up 11,8% of total volume of import.

Table 6: Import and export of foodstuff¹

	I quarter 2011		I quarter 2012 ²	
	mln. dollars	as a percent to total volume	mln. dollars	as a percent to total volume
Import	125,5	16,5	125,6	11,8
Export	40,7	9,2	38,9	10,0

¹ Including volumes of external trade implemented by individuals.

² Data are preliminary.

1.3. Labour Market

As of April 1, 2012, according to the data of the Ministry of Youth, Labor and Employment of the Kyrgyz Republic, the number of unemployed population registered in state employment services who search for work, in comparison with the same date of 2011, has decreased by 4,8% and the number of unemployed - by 5,4%. The registered unemployment rate has made up 2,5% of the economically active population.

Table 7: The number of unemployed population registered in state employment services, as of April 1, 2012

	Total thsd. people	of which unemployed		
		thsd. people	as a percent to the corresponding date of the previous year	as a percent to the corresponding date of the previous month
Kyrgyz Republic	96251	61774	94,6	100,6
Batken oblast	8586	5643	102,3	101,0
Djalal-Abad oblast	21072	11969	89,8	102,9
Issyk-Kul oblast	5450	4592	98,2	101,9
Naryn oblast	10339	6488	98,0	100,2
Osh oblast	15011	12919	94,8	101,1
Talas oblast	3741	2314	97,3	98,5
Chui oblast	8402	6026	94,7	98,5
Bishkek city	12404	9425	89,0	98,4
Osh city	6158	2398	110,0	100,0

Section II. Availability of Food

Availability of food – is a physical availability of safety and sufficient, quantitative and qualitative food at any time.

2. Agriculture

Agriculture, hunting and forestry. In January-March 2012, gross output of agriculture, hunting and forestry products was valued at 17457,9 million KG Soms and the physical volume index has made up 101,0%.

Table 8: Output of agricultural products

	As a percent to	
	the corresponding period of the previous year	the previous month
January	100,8	-
February	101,2	105,2
March	101,0	106,0
January-March	101,0	-

From total production volume the share of livestock products has made up 96,9%, crop production - 1,9%, services – 1,1%, hunting and forestry – 0,1%. The share of peasant farms and private subsidiary plots of citizens in total production volume has made up 97,4%.

Table 9: Gross output of agriculture, hunting and forestry products by territory in January-March 2012

	Mln. soms (in current prices)	As a percent to	
		the previous year	total
Kyrgyz Republic	17457,9	101,0	100,0
Batken oblast	1174,0	101,0	6,7
Djalal-Abad oblast	2291,9	101,4	13,1
Issyk-Kul oblast	2169,0	100,8	12,4
Naryn oblast	2457,8	100,6	14,1
Osh oblast	3559,8	101,0	20,4
Talas oblast	955,9	100,9	5,5
Chui oblast	4557,2	101,2	26,1
Bishkek city	188,8	99,1	1,1
Osh city	103,5	101,1	0,6

2.1. Crop Production

In agriculture of the republic spring field works are carried out.

As of the beginning of April 2012, 4,1 thsd. hectares of spring crops were sown by country as a whole which made up 16,5 % of the sown area to the corresponding period of the previous year.

Table 10: Sowing of spring crops by territory as of March 23, 2012

	Under crop – total, hectares		2012 in percent to 2011
	2011	2012	
Batken oblast	10224	768	7,5
Djalal-Abad oblast	4060	640	15,8
Issyk-Kul oblast	-	-	-
Naryn oblast	-	-	-
Osh oblast	6049	1191	19,7

	Under crop – total, hectares		2012 in percent to 2011
	2011	2012	
Talas oblast	293	110	37,5
Chui oblast	3750	1341	35,8
Bishkek city	-	-	-
Osh city	132	-	-

As of the beginning of April 2012, grain crops, vegetables and potatoes were sown mainly.

Table 11: Sowing of spring crops by types as of March 23, 2012

	Under crop – total, hectares		2012 in percent to 2011
	2011	2012	
Grain crops - total (excluding grains and legumes, rice and buckwheat)	17885	2386	13,3
Wheat	8872	631	7,1
Barley	8919	1716	19,2
Other cereals	35	-	-
Corn for grain	59	39	66,1
Grains and legumes	55	-	-
Oilseeds	1190	8	0,7
Sugar beet	15	-	-
Potatoes	2237	503	22,5
Vegetables	2645	1012	38,3
Perennial naked grasses	246	102	41,5
Other crops	235	39	16,6

It is continued the preparation of seeds to spring sowing. However, by early April 2012, the availability of seeds of agricultural crops dropped behind in demand.

Table 12: Needs and availability of seeds of agricultural crops intended for spring sowing ¹

(as of April 1, 2012, thsd. tons)

	Needs	Availability	Availability of seeds as a percent to needs
Wheat	38,3	34,9	91,1
Barley	23,0	21,0	91,4
Maize	2,4	2,2	93,6
Grains and legumes	3,6	3,6	100,0
Rice, tons	861,6	861,6	100,0
Sugar beet, tones	57,4	42,6	74,1
Cotton	2,6	1,5	56,8
Tobacco, tones	0,52	0,51	98,1
Potatoes	225,0	217,7	96,7

¹ Here and in Table 19 - According to data of State Seed Inspection of the Ministry of Agriculture and Reclamation of the Kyrgyz Republic.

From 34,9 thsd. tons of wheat seeds, as of the beginning of April 2012, it was revised 16,6 thsd. tons, of which conditioned - 15,6 thsd. tons, and from 21,0 thsd. tons of barley seeds it was revised 12,4 thsd. tons, of which conditioned - 11,9 thsd. tons.

Table 13: Availability of seeds of agricultural crops intended for spring sowing, by territory¹
(as of April 1, 2012, as a percent to needs)

	Wheat	Maize	Sugar beet	Cotton	Tobacco	Potatoe
Batken oblast	91,5	100,0	-	100,0	100,0	100,0
Djalal-Abad oblast	67,1	87,9	-	64,2	92,0	95,5
Issyk-Kul oblast	92,7	-	-	-	-	99,7
Naryn oblast	86,5	100,0	-	-	-	94,9
Osh oblast	83,2	88,7	-	49,7	100,0	87,1
Talas oblast	88,0	100,0	47,5	-	-	100,0
Chui oblast	103,8	99,3	74,6	-	-	100,0

2.2. Livestock Production

In January-March 2012, in comparison with the corresponding period of the previous year, output of main types of livestock products has increased.

Table 14: Production of main types livestock products in farms of all categories in January-March

	Produced - total, tones				As a percent to the corresponding period of the previous year			
	2011		2012		2011		2012	
	March	January-March	March	January-March	March	January-March	March	January-March
Livestock and poultry for slaughter (in live weight)	26691	79648	26893	80379	100,9	100,8	100,8	100,9
Raw milk	85465	223783	86304	226227	99,8	99,8	101,0	101,1
Eggs, thsd. pieces	30373	73819	32578	76435	99,8	103,2	107,3	103,5

It has been noted the growth of livestock production in most of regions of the country.

Table 15: Production of main livestock products by territory in January-March 2012

	Livestock and poultry for slaughter (in live weight)	Raw milk	Eggs thsd. pieces
	Tons		
Kyrgyz Republic	80379	226227	76435
Batken oblast	5779	13684	1937
Djalal-Abad oblast	10905	32634	6295
Issyk-Kul oblast	9772	38394	15285
Naryn oblast	12933	18331	613
Osh oblast	14720	42500	6485
Talas oblast	6026	14342	3089
Chui oblast	19745	65113	42290
Bishkek city	80	110	304
Osh city	419	1119	137

	Livestock and poultry for slaughter (in live weight)	Raw milk	Eggs thsd. pieces
<i>As a percent to the corresponding period of the previous year</i>			
Kyrgyz Republic	100,9	101,1	103,5
Batken oblast	101,2	100,4	101,4
Djalal-Abad oblast	101,4	101,3	103,2
Issyk-Kul oblast	101,1	101,0	96,2
Naryn oblast	100,7	100,4	100,8
Osh oblast	100,8	101,5	102,5
Talas oblast	100,8	101,1	104,6
Chui oblast	100,8	101,3	106,9
Bishkek city	89,9	63,2	93,3
Osh city	101,0	101,9	101,5

2.3. Producers Price Index of Agricultural Production

In January-March 2012, as compared with the corresponding period of the last year, producer prices for realized (sold) *agricultural products* have increased by 9,6%.

Table 16: Producer price indices of agricultural production
(as a percent)

	Total		including for production			
	to the previous period	to December of the previous year	Crop production		Livestock	
			to the previous period	to December of the previous year	to the previous period	to December of the previous year
January	96,8	96,8	104,8	104,8	91,4	91,4
February	99,3	96,1	96,2	100,8	101,6	92,9
March	101,6	97,6	103,3	104,2	100,4	93,3

In comparison with January-March 2011, the highest rise of prices for grain and legume – by 1,4 times, rice – by 1,3 times, meat – by 1,5 times and milk – by 1,4 times was noted.

Table 17: Producers price index of selected types of agricultural production in January-March 2012
(as a percent)

	Wheat	Rice	Grain and legume	Vegetables	Potatoes	Meat (in live weight)	Raw milk	Eggs
<i>To the previous month</i>								
January	98,1	108,4	99,3	109,0	134,4	85,8	108,9	94,7
February	102,0	96,8	107,5	91,8	73,6	101,1	103,2	98,4
March	100,9	95,5	106,4	101,8	115,4	101,8	96,3	107,3
<i>To the corresponding period of the previous year</i>								
January	94,4	131,9	137,5	92,9	53,9	149,6	133,2	109,3
February	83,6	131,1	138,0	77,2	42,4	146,4	140,6	99,2
March	78,8	124,2	140,6	78,8	54,4	149,6	132,4	108,9
January-March	85,0	129,1	138,8	82,6	50,2	148,5	135,3	105,7

2.4. Trade of Basic Foodstuff

According to preliminary data, the share of foodstuff import in total import value for the 1st quarter of 2012 has made up 11,8%, export – 10,0%.

Table 18: Import and export of basic foodstuff
(*thsd. tones*)

	Ist quarter	
	2011	2012*
Import		
Bakery products expressed in grain	110,6	195,3
Sugar and confectioneries	19,9	20,5
Vegetable oil	6,2	9,5
The share of foodstuff in total import value, %	16,5	11,8
Export		
Milk and dairy products expressed in milk	6,4	12,0
Sugar and confectioneries	0,3	0,2
The share of foodstuff in total export value, %	9,2	10,0

* Data are preliminary

2.5. Availability of Food Per Capita

The analysis of food balance shows that the availability of foodstuff per capita in average for month remains stable (see Table 19 and Annex 3).

Table 19: Level of consumption of basic foodstuff
(*per capita, kg per month*)

	Ist quarter	
	2011	2012*
Bakery products (expressed in grain)	16,1	16,1
of which wheat processed products (expressed in grain)	14,1	14,2
Potatoes	8,3	8,4
Vegetables and melons	10,5	7,4
Fruits and berries	1,0	1,0
Sugar and confectioneries	1,6	1,5
Meat and meat products	3,5	3,4
Milk and dairy products	12,3	12,3
Eggs, pieces	6,2	6,2
Vegetable fats	1,0	1,0

* Data are preliminary

More detailed information is provided in Annex (table 3 «Food balance»²).

² Food balances were compiled in accordance with «Methodology of calculation of basic foodstuff balance», approved by the Decree of the National Statistical Committee of the Kyrgyz Republic from September 15, 2010, №19.

Section III. Access to Food

Access: Foodstuff must be accessible both in terms of their physical availability and in terms of purchasing power.

3.1. Consumer Price Analysis

Growth of consumer prices in the 1st quarter of 2012 has made up 0,9% against 6,4% in the 1st quarter of 2011. It is necessary to note that prices have increased by 0,8% basically in January 2012. Consumer price growth rate during the follow-up months decreased, so in February 2012 the growth was 0,1%, in March 2012 prices were not practically changed in comparison with the previous month.

Since the beginning of 2012, prices and tariffs have increased throughout the country. The highest increase of prices and tariffs was observed in Batken oblast (by 2,9 %). In the 1st quarter of 2012 the increase of prices (by 0,7%) for foodstuff and nonalcoholic beverages was recorded only in Naryn oblast. Prices and tariffs for nonfood items and services have increased in all regions of the country, and their maximum increase has recorded in Batken oblast - by 5,5% and 5,3% respectively.

In the 1st quarter of 2012, prices for foodstuff and alcoholic beverages dropped totally by 0,6% due to decrease of prices for bakery products and cereals by 3,8%, and the significant share of household expenditures belonged to them.

In the 1st quarter of 2012 prices for flour and bread continued to decline. Prices for the first grade flour have decreased more intensively (on average per month by 3,2%) than for high quality flour, which prices have decreased by 1,2% on average per month. Prices for cereals also dropped by 17,0%. Prices for rice have increased only by 1,4%.

In the 1st quarter of 2012 prices for fresh meat decreased by 0,2%, while in January it was observed their increase by 2,0%.

Prices for dairy products, cheese and eggs have increased by 1,1% in comparison with December 2011 despite the decrease of prices (by 1,1%) for them in March 2012 in comparison with the previous month. Since the beginning of 2012 prices for pasteurized milk (by 0,5%), kefir and airan (by 0,7%) and hen's eggs (by 1,1%) have decreased.

Prices for vegetable oils, in comparison with December 2011, decreased by 1,8%, animal fats against increased by 3,6%.

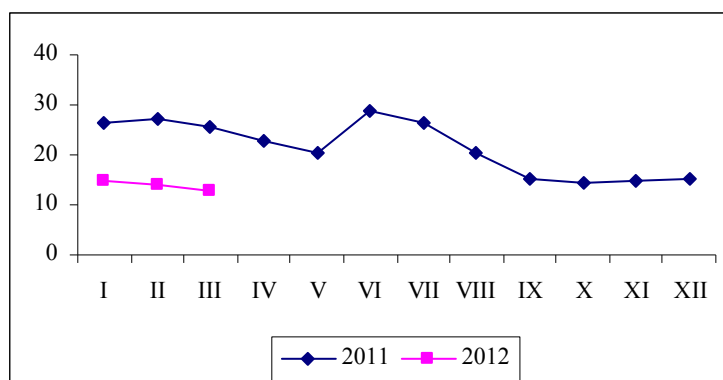
In the 1st quarter of 2012 prices for fruits and vegetables increased by 3,2%, of which fruits – by 1,6%, vegetables – by 3,9%.

In January-March 2012 alcoholic beverages and tobacco have increased by 1,2%.

Potatoes. During the 1st quarter of 2012, it had been observed the decrease of cost of potatoes (by 13,6%). In comparison with the 1st quarter of 2011, the average consumer price has decreased by 52 % and made up 13,75 soms per kilo.

Graph 1: Monthly average consumer prices for potatoes

(soms per kg.)

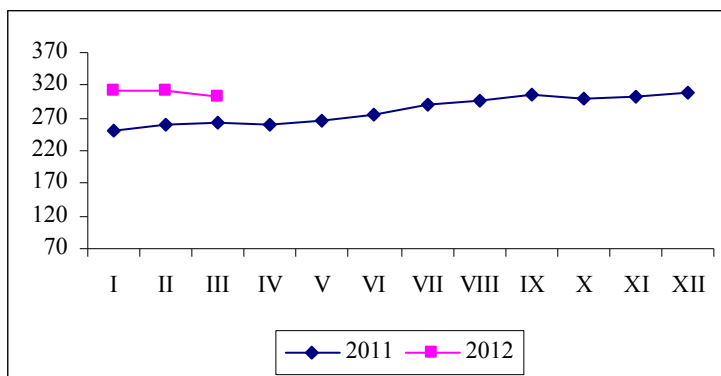


Mutton. In the 1st quarter of 2012 in comparison with the 1st quarter of 2011, the average price for mutton has increased from 259,16 soms to 292,48 soms per kilogram or the increase was 12,9 %.

Beef. On average from January to March 2012, prices for beef have insignificantly decreased from 312,65 soms per kilogram in January to 303,26 soms in March and in comparison with the IV quarter of 2011 their growth have made up 19,7%.

Graph 2: Monthly average consumer prices for beef

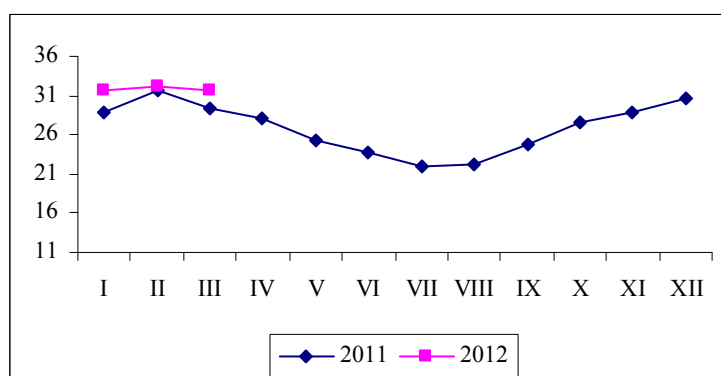
(soms per kg.)



Fresh milk. In the 1st quarter of 2012, the average consumer price for milk has remained almost unchanged (31,70 soms – in January and 31,57 soms in March) and in comparison with the 1st quarter of 2011, the average consumer price has increased by 6,1% and made up 31,84 soms per kilogram.

Graph 3: Monthly average consumer prices for fresh milk

(soms per kg.)



3.2. Money Income of Population

Money income of population. According to results of households sampling survey, nominal money income per capita for January-September 2011 was valued at 2916,1 KG soms per month and in comparison with the previous year have increased by 13,1 %. The main source of population money income was income from labour activity, its share in income structure made up 67,2 %, incomes from social transfers – 13,5 % and from sale of agricultural output produced in private subsidiary plot – 13,7 %.

Monthly average per capita real money income of the population in January-September 2011 was valued at 2430,8 KG soms and decreased by 5,7% in comparison with the corresponding period of the previous year.

Size of average per capita disposable money income was valued at 2751,4 KG soms. Average per capita disposable money incomes of population living in Bishkek city (by 630,7 soms), Batken oblast (238,1soms) and Chui oblast (by 173,9 soms) were higher than average republican level. Disposable incomes of

population living in Issyk-Kul oblast (2698,3 soms) and Osh oblast (2609,0 soms) were close to average republican level. Incomes of population living in Talas oblast (2187,0 soms), Naryn oblast (2260,2 soms) and Djalal-Abad oblast (2454,0 soms) were considerably less than average republican level.

The structure of average per capita disposable money incomes of households differs significantly depending on their place of residence. In urban areas, income from labour activity in total revenue has made up 76,9 %, in rural areas – 57,0 %. The second most important source of income in rural areas was the proceeds of the sale of products produced in private subsidiary plots of population and their share made up 23,0%.

Distribution of total money income by quintile groups of population is for the benefit of 20 % of population with the highest incomes, who have concentrated more than 45 % of all money incomes.

Table 20: Population money income by quintile groups
(as a percent)

	January-September	
	2010	2011
Money income -total	100	100
including 20 percent groups		
the first (with the lowest income)	6,0	5,7
the second	10,7	10,3
the third	15,6	15,4
the fourth	22,8	22,7
the fifth (with the highest income)	45,0	45,9
Income ratio of 20% highest and 20% lowest income groups of population, in times	7,5	8,1

The monthly average nominal salary per employee in January-March 2012 (excluding small enterprises) was valued at 10127KG soms and in comparison with January-March 2011 has increased by 37,8 %, and its real size calculated including consumer price index has increased by 35%.

Based on official exchange rate stated by the National Bank of the Kyrgyz Republic, monthly average salary per employee in January-March 2012 has made up 216,8 US dollars.

Table 21: Monthly average nominal and real salary by territory¹
in January-March 2012

	Soms	As a % to the corresponding period of the previous year		Real salary as a % to the corresponding period of the previous year
		2011	2012	
Kyrgyz Republic	10127	116,2	137,8	135,0
Batken oblast	7957	112,7	162,4	145,9
Djalal-Abad oblast	9393	116,6	150,2	142,0
Issyk-Kul oblast	7635	122,2	146,6	151,1
Naryn oblast	9977	113,8	158,6	147,9
Osh oblast	7422	116,9	182,2	171,1
Talas oblast	7903	119,1	141,3	134,4
Chui oblast	8457	115,9	136,3	133,7
Bishkek city	13168	115,7	125,9	125,6
Osh city	9116	114,5	137,8	129,4

¹ Excluding small enterprises.

Table 22: Monthly average nominal salary by territory¹ in January-February 2012

	Soms				As a % to the corresponding period of the previous year	
	Budgetary sphere		Non-budgetary sphere		budgetary sphere	non-budgetary sphere
	2011	2012	2011	2012		
Kyrgyz Republic	5410	8527	10708	13014	157,6	121,5
Batken oblast	4282	7414	7271	9850	173,1	135,5
Djalal-Abad oblast	4091	7159	11075	14599	175,0	131,8
Issyk-Kul oblast	4588	7323	6818	8385	159,6	123,0
Naryn oblast	5878	9594	8565	12088	163,2	141,1
Osh oblast	3724	7156	6706	9341	192,2	139,3
Talas oblast	4238	7202	11527	11139	169,9	96,6
Chui oblast	4960	7859	7940	9337	158,4	117,6
Bishkek city	8111	11158	12493	15021	137,6	120,2
Osh city	5046	8164	9412	11097	161,8	117,9

¹ Excluding small enterprises.

In January-March 2012, growth of salary in comparison with the corresponding period of the previous year was observed in all types of economic activity, but the most significant one – education (by 71,4%) and health (in 2,2 times).

In January-March 2012, salary of employees engaged in financial activity, transport and communication, production and distribution of energy and electricity, gas and water was significantly higher than average republican level. Its lowest level was in agriculture, education, provision of communal, social and personal services.

Table 23: Monthly average nominal salary of employees of enterprises and organizations by type of economic activity¹ in January-March 2012

	Soms		As a % to the corresponding period of the previous year	
	2011	2012	2011	2012
	Total	7350	10127	116,2
Agriculture, hunting and forestry	4532	4823	113,1	106,4
Fishery	3609	3762	116,7	104,2
Mining	8840	12695	125,9	143,6
Manufacturing	8662	10117	117,9	116,8
Production and distribution of electricity, gas and water	11457	13736	124,0	119,9
Construction	7748	8680	99,2	112,0
Trade; repair of vehicles, household utensils and articles of personal use	9402	11713	112,4	124,6
Hotels and restaurants	8762	9899	107,9	113,0
Transport and communication	13268	15572	124,5	117,4
Financial activity	19526	22263	104,0	114,0
Real estate operations, leasing and services for consumers	10047	12533	123,6	124,7
Public administration	9159	10328	117,3	112,8
Education	4578	7847	117,9	171,4
Health and social services	4246	9326	102,6	219,6

	Soms		As a % to the corresponding period of the previous year	
	2011	2012	2011	2012
Public, social and personal services	5648	7838	114,1	138,8

¹ Excluding small enterprises.

The sum of total debt on payment of salary as of April 1, 2012 by country as a whole has increased by 3,9% as compared to the same date of 2011, and has decreased by 2,6 % as compared to the same date of the previous month.

Table 24: Total debt on payment of salary by territory¹ as of April 1, 2012

	Mln. Soms	As a % to the corresponding period of	
		the previous year	the previous month
Kyrgyz Republic	308,7	103,9	97,4
Batken oblast	40,7	128,9	107,0
Djalal-Abad oblast	58,9	94,1	127,2
Issyk-Kul oblast	35,4	86,6	78,7
Naryn oblast	13,1	113,9	113,0
Osh oblast (including Osh city)	34,9	77,0	117,7
Talas oblast	6,3	119,3	73,5
Chui oblast	73,5	102,7	77,8
Bishkek city	46,0	161,3	105,7

¹ Excluding small enterprises.

Methodological explanations

The unemployed – people at the age of 16 years and over who during the period under review had no job (income-generating occupation); who were in search for a job i.e. applied to state employment service or used alternative ways of job finding as well as those who were ready to start working.

Gross Domestic Product (GDP) – a general indicator of economic activity of the country, which is calculated in current market prices (GDP nominal) and in comparable prices (GDP real).

Consumer price index for goods and paid services to population (CPI) – characterises the change in the general price level for goods and services over time. The index measures the correlation of the value of actually fixed set of goods and services during the given period to its value during the basic period.

Monthly average nominal salary is calculated by dividing actually accrued salary fund of the staff and part-time employees to the number used for the calculation of average salary and to the number of months in a reporting period.

Average daily per capita calorie characterizes energy value and calories in consumed food products per one household member as well as chemical composition in proteins and fats.

Official unemployment level – is the ratio of people officially registered as unemployed to the number of economically active population expressed in percent.

Availability of food refers to the physical quantities of food at the disposal of the population as a result of domestic food production or market. At the national level availability of food is defined as a combination stocks, commercial import, food aid and own production. Following aspects also refer to availability: climatic conditions, the areas sown and harvested, crop yields, animal numbers and productivity, producer prices for food, food prices in neighboring countries, and the national policies which determine production, trade, distribution and pricing.

The availability of food per capita is calculated using food supply/consumption balance sheet (food balance). A food balance shows for each basic foodstuff the total physical availability and consumption of that foodstuff over a given period of time, usually for 1 year. Total **physical availability** is the sum of opening stocks, production and import in that product in a given period of time. **Total use** is human consumption + animal feed + seeds + losses + exports. Drawn up over a succession of years, food balances usually reveal a trend in total availability, import, export, and the availability of food for human consumption and for fodder. Dividing the annual amount of food available for human consumption by the population gives a key indicator of availability: the average availability of food per capita per year. This measure of food availability is a national average, which does not take into account households' access (i.e. ability to produce, purchase or otherwise obtain) to food.

Access to food refers to the ability of household members to obtain adequate safety and appropriate foods to meet their needs for a healthy and active life. Access can be through production for own consumption, market purchases or donations/transfers. Access differs between households according to employment status, income, family size, location etc. Elements that affect the access also include social security, payment delays in salaries and wages, inflation, the cost of essential foodstuff and other goods and services. National policy, which affects employment, income and inflation, also affects significantly households' access to food.

Use of food refers to the selection, composition, preparation and allocation of food within the household. Utilization of food refers to the ability of the human body to take and use food within the body and convert food into energy. Food use covers knowledge of appropriate diets, and proper allocation of food within the family. The ability of the body to utilize food is affected by its state of health and access to clean drinking water, access to basic health services, food cooking and food storage. The ultimate measure of food security is the nutritional status of the population.

List of Abbreviations

GDP	Gross Domestic Product/ Валовой внутренний продукт (ВВП)
WHO	World Health Organization/ Всемирная организация здравоохранения (ВОЗ)
GMCL	Guaranteed Minimum Consumption Level/Гарантированный минимальный уровень потребления (ГМУП)
UMB	Unified (one-time) Monthly Benefit (payment)/Единые ежемесячные пособия (ЕЕП)
EC	European Commission/Европейская Комиссия (ЕК)
CPI	Consumer Price Index for goods and paid services to population/Индекс потребительских цен (ИПЦ) на товары и платные услуги населению
EC FSP	European Commission Food Security Program/Программа Продовольственной Безопасности Европейской Комиссии (ППБ ЕК)
FAO	UN Food & Agriculture Organization/Продовольственная и Сельскохозяйственная Организация ООН (ФАО)

Annex

Annex 1. Review of hydro meteorological conditions on the territory of the Kyrgyz Republic in the 1st quarter of 2012.

(Source: State Agency on Hydrometeorology of the Ministry of Emergency of the Kyrgyz Republic)

Agro meteorological conditions:

January. Monthly average temperature of air in the most regions was below the normal by 1...3 degrees, in Suusamyr and Chatkal Valleys was below the normal by 4...6 degrees, in Toktogul howe and Kumtor tracts – close to normal.

Rainfall in the most regions of the country was below the normal by 13-73%, in Chui, Alamudun, Batken, Alai and Naryn regions was close to normal by 91-115%, on the east of Issyk-Kul howe made up 171-333% from the multiyear normal.

February. Monthly average temperature of air in the most regions was below the normal by 3...5 degrees, in Kumtor tract was close to the multiyear normal.

Rainfall in the most regions of the country was close to normal (84-115%), in Issyk-Kul oblast, Batken region, Chychkan tract, Suusamyr and Chatkal Valleys made up 131-317% from the multiyear normal, in Talas Valley, in Jaiyl, At-Bashy, Naryn and Leilek regions was below the normal by 14-75%.

March. Monthly average temperature of air in the most regions was below the normal by 1...3 degrees, in Chui and Talas Valleys and on Chon-Ashuu Pass was close to the multiyear normal.

Rainfall in the most regions of the country was close to normal (83-121%), in Chatkal Valley, in a zone of husbandry of Naryn oblast and on the west of Issyk-Kul region was above the multiyear normal by 124-174%, in Talas region, on the east of Issyk-Kul oblast and in Leilek region was below the normal by 12-75%.

Hydrological conditions in March 2012:

During the month it was observed the increased outlet of the most rivers of the country (125-195% of normal). Decreased outlet of rivers as Tentek Sai, Yassy, Donguz Too, Kegart, Zerger, Changet and Ak Buura has made up 40-73% of normal. Water content of rivers as Karakol, Chon Ak Suu, Chon Kemin, Uzun Akmat, Chychkan, Padysha Ata, Kara Kuldja, Isfairam Sai and riverheads of Naryn river was within the norm.

Water inflow into the following reservoirs was normal: Orto-Tokoi - 145%, Kirov – 114%, Toktogul – 126%.

Condition of Reservoirs as of March 31, 2012

Reservoirs	Changes during a month, mln. m ³	Volume of water in 2012		Volume of water in 2011	
		mln. m ³	as a % of volume	mln. m ³	as a % of volume
Toktogul	-1231	13220	68	15413	79
Orto-Tokoi	+3	462	98	471	100
Kirov	+55	495	90	534	97

**Таблица 2: Средние потребительские цены на продукты питания
в разрезе регионов в I квартале 2011-2012 гг.**
(сом/кг)

Table 2: Average consumer prices for food by regions in the Ist quarter of 2011-2012
(soms / kg)

Область /Oblast	I квартал / I quarter		2012		
	2011	2012	январь/ January	февраль/ February	март/ March
Картофель / Potatoes					
Баткенская/ Batken	15,72	18,00	20,00	18,00	16,00
Джалал-Абадская / Djalal-Abad	24,39	15,00	16,50	15,00	13,50
Иссык-Кульская / Issyk-Kul	21,77	6,71	7,50	6,75	5,88
Нарынская / Naryn	19,00	11,65	12,00	12,00	10,96
Ошская / Osh	21,95	15,69	16,33	15,67	15,08
Таласская / Talas	22,34	10,45	12,25	10,50	8,60
Чуйская / Chui	24,45	13,62	14,25	13,55	13,05
г.Бишкек/ Bishkek city	29,50	13,58	14,45	13,88	12,42
В среднем по республике / On average by the country	26,46	13,75	14,65	13,93	12,66
Молоко свежее / Fresh milk					
Баткенская/ Batken	26,27	32,50	32,50	32,50	32,50
Джалал-Абадская / Djalal-Abad	27,08	36,25	40,00	38,75	30,00
Иссык-Кульская / Issyk-Kul	24,72	21,53	21,67	21,67	21,25
Нарынская / Naryn	26,27	29,33	31,00	30,00	27,00
Ошская / Osh	27,58	32,50	34,17	31,67	31,67
Таласская / Talas	25,00	27,50	28,75	27,08	26,67
Чуйская / Chui	25,00	26,25	26,25	26,25	26,25
г.Бишкек/ Bishkek city	32,33	32,78	31,67	33,33	33,33
В среднем по республике / On average by the country	30,02	31,84	31,70	32,26	31,57
Мука 1 сорта / Flour, 1st grade					
Баткенская/ Batken	29,17	26,00	27,00	26,00	25,00
Джалал-Абадская / Djalal-Abad	27,88	22,21	23,00	22,13	21,50
Иссык-Кульская / Issyk-Kul	29,61	22,17	22,17	22,17	22,17
Нарынская / Naryn	29,18	23,25	23,25	23,25	23,25
Ошская / Osh	29,07	27,47	28,83	27,33	26,25
Таласская / Talas	25,54	19,19	19,25	19,25	19,06
Чуйская / Chui	31,24	24,17	24,65	24,15	23,70
г.Бишкек/ Bishkek city	31,51	25,02	25,56	24,81	24,69
В среднем по республике / On average by the country	30,56	24,89	25,53	24,74	24,41
Рис среднезерный / Rice (middle sized)					
Баткенская/ Batken	62,96	72,22	71,67	71,67	73,33
Джалал-Абадская / Djalal-Abad	52,21	74,58	73,75	75,00	75,00
Иссык-Кульская / Issyk-Kul	57,98	63,33	63,33	63,33	63,33
Нарынская / Naryn	57,83	59,00	59,00	59,00	59,00
Ошская / Osh	81,11	89,48	90,00	89,69	88,75
Таласская / Talas	57,23	60,00	60,00	60,00	60,00
Чуйская / Chui	58,38	61,53	62,13	61,75	60,70
г.Бишкек/ Bishkek city	60,83	61,38	61,38	61,38	61,38
В среднем по республике / On average by the country	62,78	66,55	66,59	66,61	66,46

Таблица 2: (продолжение)

Table 2: (continued)

Область /Oblast	I квартал / I quarter		2012		
	2011	2012	январь/ January	февраль/ February	март/ March
Сахар-песок / Granulated sugar					
Баткенская/ Vatken	63,13	60,00	60,00	60,00	60,00
Джалал-Абадская / Djalal-Abad	64,33	55,31	57,25	53,00	55,67
Иссык-Кульская / Issyk-Kul	60,51	49,11	49,67	49,00	48,67
Нарынская / Naryn	61,17	51,40	52,00	51,40	50,80
Ошская / Osh	62,83	54,06	54,31	54,13	53,75
Таласская / Talas	61,86	50,43	50,39	50,46	50,43
Чуйская / Chui	62,83	47,98	48,55	47,90	47,50
г.Бишкек/ Bishkek city	64,09	50,65	50,80	50,59	50,55
В среднем по республике / On average by the country	63,56	51,52	51,86	51,31	51,38
Лук / Onions					
Баткенская/ Vatken	18,57	17,79	20,75	17,25	15,38
Джалал-Абадская / Djalal-Abad	22,88	16,50	16,50	16,50	16,50
Иссык-Кульская / Issyk-Kul	26,95	17,25	20,00	19,00	12,75
Нарынская / Naryn	28,40	15,23	15,00	15,56	15,13
Ошская / Osh	21,42	15,83	16,00	16,00	15,50
Таласская / Talas	25,50	16,00	16,00	17,00	15,00
Чуйская / Chui	24,76	15,44	16,03	15,40	14,90
г.Бишкек/ Bishkek city	29,66	17,37	18,00	16,89	17,22
В среднем по республике / On average by the country	26,90	16,92	17,61	16,73	16,43
Хлопковое масло / Cotton oil					
Баткенская/ Vatken	85,42	94,17	100,00	92,50	90,00
Джалал-Абадская / Djalal-Abad	100,31	103,31	106,04	101,36	102,52
Иссык-Кульская / Issyk-Kul	106,37	110,49	111,30	111,30	108,85
Нарынская / Naryn	100,93	97,69	102,78	95,83	94,44
Ошская / Osh	107,36	115,63	116,77	115,92	114,22
Таласская / Talas	81,18	95,47	97,83	94,57	94,02
Чуйская / Chui	109,20	103,45	103,45	103,45	103,45
г.Бишкек/ Bishkek city	102,80	110,18	110,18	110,18	110,18
В среднем по республике / On average by the country	102,96	109,00	109,69	108,84	108,46
Баранина / Mutton					
Баткенская/ Vatken	250,17	300,00	300,00	300,00	300,00
Джалал-Абадская / Djalal-Abad	268,33	300,00	300,00	300,00	300,00
Иссык-Кульская / Issyk-Kul	236,92	258,65	258,44	258,75	258,75
Нарынская / Naryn	253,93	297,25	291,75	300,00	300,00
Ошская / Osh	264,50	300,00	300,00	300,00	300,00
Таласская / Talas	248,25	282,17	281,00	282,00	283,50
Чуйская / Chui	234,00	261,04	260,63	263,44	259,06
г.Бишкек/ Bishkek city	262,63	296,18	297,22	297,22	294,10
В среднем по республике / On average by the country	259,16	292,48	293,00	293,34	291,12

Таблица 2: (продолжение)

Table 2: (continued)

Область /Oblast	I квартал / I quarter		2012		
	2011	2012	январь/ January	февраль/ February	март/ March
Говядина / Beef					
Баткенская / Batken	230,83	260,00	260,00	260,00	260,00
Джалал-Абадская / Djalal-Abad	240,00	290,00	290,00	290,00	290,00
Иссык-Кульская / Issyk-Kul	249,71	275,21	278,13	273,75	273,75
Нарынская / Naryn	257,50	301,67	300,00	300,00	305,00
Ошская / Osh	239,29	280,00	280,00	280,00	280,00
Таласская / Talas	257,33	293,83	296,00	292,00	293,50
Чуйская / Chui	270,35	310,92	319,75	310,00	303,00
г.Бишкек/ Bishkek city	266,03	323,43	328,13	327,08	315,08
В среднем по республике / On average by the country	258,04	308,98	312,65	311,02	303,26
Конина / Horsemeat					
Баткенская / Batken	-	-	-	-	-
Джалал-Абадская / Djalal-Abad	240,83	300,00	300	300,00	300,00
Иссык-Кульская / Issyk-Kul	241,67	269,17	272,5	260,00	275,00
Нарынская / Naryn	257,50	301,67	300	300,00	305,00
Ошская / Osh	170,00	-	-	-	-
Таласская / Talas	275,33	346,67	340	350,00	350,00
Чуйская / Chui	250,67	338,33	335	340,00	340,00
г.Бишкек/ Bishkek city	245,33	350,42	355	349,75	346,50
В среднем по республике / On average by the country	234,33	339,45	342,5832172	338,60	337,15
Свинина / Pork					
Баткенская / Batken	-	-	-	-	-
Джалал-Абадская / Djalal-Abad	-	-	-	-	-
Иссык-Кульская / Issyk-Kul	169,00	223,33	220,00	220,00	230,00
Нарынская / Naryn	-	-	-	-	-
Ошская / Osh	200,00	306,25	306,25	312,50	300,00
Таласская / Talas	200,00	200,00	200,00	200,00	200,00
Чуйская / Chui	187,50	228,06	220,00	227,50	236,67
г.Бишкек/ Bishkek city	225,00	253,33	238,75	258,75	262,50
В среднем по республике / On average by the country	214,15	256,90	245,90	261,37	263,41
Куры / Chicken					
Баткенская / Batken	150,00	202,92	200,00	203,75	205,00
Джалал-Абадская / Djalal-Abad	279,16	381,67	387,50	380,00	377,50
Иссык-Кульская / Issyk-Kul	241,11	200,00	200,00	200,00	200,00
Нарынская / Naryn	171,78	175,69	175,00	177,50	174,58
Ошская / Osh	240,00	246,11	245,00	246,67	246,67
Таласская / Talas	223,75	239,91	250,00	235,88	233,85
Чуйская / Chui	168,33	206,80	186,00	197,50	236,90
г.Бишкек/ Bishkek city	228,67	313,06	324,58	312,50	302,08
В среднем по республике / On average by the country	226,07	288,85	294,54	287,76	284,24
Яйца / Eggs (10 pieces)					
Баткенская / Batken	89,17	100,00	100,00	100,00	100,00
Джалал-Абадская / Djalal-Abad	71,25	73,60	76,00	72,86	71,93
Иссык-Кульская / Issyk-Kul	70,15	77,33	83,00	78,00	71,00
Нарынская / Naryn	77,85	83,75	83,75	83,75	83,75
Ошская / Osh	66,67	68,61	70,00	68,75	67,08
Таласская / Talas	75,53	87,71	90,00	90,00	83,13
Чуйская / Chui	71,58	75,00	79,50	74,00	71,50
г.Бишкек/ Bishkek city	67,18	71,63	71,97	71,39	71,52
В среднем по республике / On average by the country	69,04	73,28	74,49	73,09	72,27

**Продовольственный баланс
по базовым продуктам питания ¹**

Таблица 3.

**Table 3. Food balance
by basic foodstuffs ¹**

Базовые продукты питания / Basic foodstuffs	Хлебопродукты/ Bread and bread products			Пшеница и продукты ее переработки/Wheat and wheat processed products			Картофель / Potatoes			Овощи и бахчевые / Vegetables and melons			Фрукты и ягоды / Fruits and berries		
	в пересчете на зерно, тыс. тонн /expressed in grain, thsd. tons			в пересчете на зерно, тыс. тонн /expressed in grain, thsd. tons			свежий, тыс. тонн / fresh, thsd. tons			свежий, тыс. тонн / fresh, thsd. tons			свежий, тыс. тонн / fresh, thsd. tons		
	2011	I кв. 2011 / 1st quarter 2011	I кв. 2012 / 1st quarter 2012	2011	I кв. 2011 / 1st quarter 2011	I кв. 2012 / 1st quarter 2012	2011	I кв. 2011 / 1st quarter 2011	I кв. 2012 / 1st quarter 2012	2011	I кв. 2011 / 1st quarter 2011	I кв. 2012 / 1st quarter 2012	2011	I кв. 2011 / 1st quarter 2011	I кв. 2012 / 1st quarter 2012
1. Запасы на начало года / Opening stocks	1453,8	1453,8	1382,8	827,2	827,2	814,2	712,2	712,2	727,0	236,9	236,9	164,7	9,4	9,4	22,0
2. Произведено продовольствия в стране (+) / Food production in the country	1580,7	-	-	799,8	-	-	1379,2	-	-	972,5	-	-	215,1	-	-
3. Импортировано прод. товаров (+) / Food imports	535,4	110,6	195,3	451,1	88,3	176,7	0,7	0,0	0,1	7,6	1,6	2,0	47,4	13,4	9,1
Поступление (1-3) (+) Availability	3569,9	1564,4	1578,1	2078,1	915,5	990,9	2092,1	712,2	727,1	1217,0	238,5	166,7	271,9	22,8	31,1
4. Расходы на семена (-) / Expenses for seeds	124,1	4,5	0,6	76,0	2,1	0,2	297,1	7,8	1,8	0,0	0,0	0,0	-	-	-
5. На корм скоту (-) / Fodder	899,8	275,5	285,0	264,0	66,0	67,5	200,3	61,1	63,2	82,5	18,8	18,9	4,9	1,0	1,1
6. Потери (-) / Losses	61,8	27,4	27,3	19,2	4,8	4,9	63,0	20,6	21,9	15,6	2,2	1,9	11,4	0,1	1,3
7. Экспортировано прод. товаров (-) / Food exports	104,5	29,6	15,0	16,4	0,3	0,5	289,8	32,0	26,6	162,4	47,0	24,8	90,3	4,9	11,7
8. Наличие для потребления населением (-) / Availablity for consumption by the population	996,9	252,1	256,1	888,3	221,1	226,1	514,9	130,5	133,3	791,8	165,3	118,3	143,3	16,4	16,6
Использование Consumption	2187,1	589,1	584,0	1263,9	294,3	299,2	1365,1	252,0	246,8	1052,3	233,3	163,9	249,9	22,4	30,7
10. Запасы на конец периода / Closing stocks	1382,8	975,3	994,1	814,2	621,2	691,7	727,0	460,2	480,3	164,7	5,2	2,8	22,0	0,4	0,4

¹ Предварительные данные/Preliminary data

² С учетом неучтенного экспорта/Including unaccounted export

Таблица 3.(продолжение)

Table 3. (continued)

Базовые продукты питания / Basic foodstuffs	Мясо и мясопродукты / Meat and meat products			Молоко и молочные продукты / Milk and dairy products			Яйца / Eggs			Жиры растительные / Vegetable oil			Сахар и кондитерские изделия / Sugar and confectionery		
	в пересчете на убойный вес, тыс.тонн /expressed in slaughter weight, thsd. tons			в пересчете на молоко, тыс. тонн / expressed in milk, thsd. tons			миллионов штук / million pieces			тыс. тонн / thsd. tons			в пересчете на сахар, тыс. тонн/expressed in sugar, thsd. tons		
	2011	I кв. 2011 / 1st quarter 2011	I кв. 2012 / 1st quarter 2012	2011	I кв. 2011 / 1st quarter 2011	I кв. 2012 / 1st quarter 2012	2011	I кв. 2011 / 1st quarter 2011	I кв. 2012 / 1st quarter 2012	2011	I кв. 2011 / 1st quarter 2011	I кв. 2012 / 1st quarter 2012	2011	I кв. 2011 / 1st quarter 2011	I кв. 2012 / 1st quarter 2012
1. Запасы на начало года / Opening stocks	4,6	4,6	7,7	38,6	38,6	44,0	25,4	25,4	40,2	36,0	36,0	23,7	16,0	16,0	11,2
2. Произведено продовольствия в стране (+) / Food production in the country	189,5	44,4	43,8	1358,1	223,8	226,2	391,0	73,8	76,4	15,6	4,7	4,2	17,0	0,0	0,0
3. Импортировано прод. товаров (+) / Food imports	87,4	27,8	19,5	18,2	4,5	4,0	58,6	10,0	2,2	37,1	6,2	9,5	91,0	19,9	20,5
Поступление (1-3) (+) Availability	281,5	76,8	71,0	1414,9	266,9	274,2	475,0	109,2	118,8	88,7	46,9	37,4	124,0	35,9	31,7
4. Расходы на семена (-) / Expenses for seeds	-	-	-	-	-	-	8,6	1,6	1,7	-	-	-	-	-	-
5. На корм скоту (-) / Fodder	0,0	0,0	0,0	113,0	45,6	45,9	1,0	0,0	0,0	-	-	-	-	-	-
6. Потери (-) / Losses	0,3	0,0	0,1	1,7	0,2	0,3	0,0	0,0	0,0	0,0	0,0	0,0	0,1	0,0	0,0
7. Экспортировано прод. товаров (-) / Food exports	69,6	0,1	0,2	139,9	6,4	12,0	0,0	0,0	0,0	0,0	0,0	0,0	0,1	0,3	0,2
8. Наличие для потребления населением (-) / Availablity for consumption by the population	203,9	54,8	54,6	1116,3	193,6	195,8	425,2	97,6	99,5	65,0	15,1	15,9	112,6	25,5	23,7
Использование Consumption	273,8	54,9	54,9	1370,9	245,8	254,0	434,8	99,2	101,2	65,0	15,1	15,9	112,8	25,8	23,9
10. Запасы на конец периода / Closing stocks	7,7	21,9	16,1	44,0	21,1	20,2	40,2	10,0	17,6	23,7	31,8	21,5	11,2	10,1	7,8

¹ Предварительные данные/Preliminary data² С учетом неучтенного экспорта/Including unaccounted export

**Таблица 4: Баланс питания в виде энергетической ценности по результатам обследований
ежедневного потребления и оценки ежедневных потребностей**
(все население по демографическим группам и регионам)

**Table 4: Food Balance expressed in nutritional values and compared to calculated daily needs based on surveys of daily intake
and on calculated daily needs based on recurrent nutritional surveillance**
(total population by age groups and by region)

	Население, человек		Ккал в день на душу населения		Белки в день на душу населения, грамм		Жиры в день на душу населения, грамм		
	Number, people		C/Calories C/d/p		Proteins g/d/p		Fats g/d/p		
	9 месяцев / 9 months		9 месяцев / 9 months		9 месяцев / 9 months		9 месяцев / 9 months		
	2010	2011	2010	2011	2010	2011	2010	2011	
Все население	5 418 299	5 477 620							Total population
Баткенская область	433 802	441 101	2 144	2 299	54,6	56,5	62,6	68,7	Batken oblast
Джалал-Абадская область	1 023 132	1 036 644	2 299	2 248	61,4	59,1	56,2	54,6	Djalal-Abad oblast
Иссык-Кульская область	441 323	444 520	2 325	2 341	59,7	61,5	62,3	63,8	Yssyk-Kul oblast
Нарынская область	259 378	262 137	2 037	2 060	56,3	58,4	50,1	48,5	Naryn oblast
Ошская область	1 376 957	1 386 734	2 135	2 157	55,6	55,8	56,0	57,5	Osh oblast
Таласская область	228 995	231 819	2 522	2 413	64,7	63,6	65,5	58,0	Talas oblast
Чуйская область	808 245	814 870	2 596	2 434	68,7	64,7	77,1	68,0	Chui oblast
г.Бишкек	846 467	859 795	2 403	2 233	66,6	61,6	66,2	62,5	Bishkek city
Суточное потребление			2 305	2 260	61,0	59,6	61,9	60,3	Daily intake
Суточные потребности			2 101	2 101	73,0	73,0	71,0	71,0	Daily needs
Баланс: (+) или (-)			204	159	-12	-13	-9	-11	Balance: (+) or (-)

Таблица 4: (продолжение)

Table 4: (continued)

	Население, человек		Ккал в день на душу населения		Белки в день на душу населения, грамм		Жиры в день на душу населения, грамм		
	Number, people		C/Calories C/d/p		Proteins g/d/p		Fats g/d/p		
	9 месяцев / 9 months		9 месяцев / 9 months		9 месяцев / 9 months		9 месяцев / 9 months		
	2010	2011	2010	2011	2010	2011	2010	2011	
Население пенсионного возраста	563 754	598 542							Pensioners
Баткенская область	36 992	44 625	2 388	2 575	63,4	65,2	70,7	78,6	Batken oblast
Джалал-Абадская область	101 250	108 512	2 591	2 427	71,1	64,3	67,3	61,1	Djalal-Abad oblast
Иссык-Кульская область	52 506	52 338	2 855	2 748	73,6	72,8	81,0	79,1	Yssyk-Kul oblast
Нарынская область	27 670	28 637	2 014	2 185	56,3	65,4	51,4	55,3	Naryn oblast
Ошская область	114 205	123 271	2 501	2 414	66,2	63,2	69,5	67,0	Osh oblast
Таласская область	19 039	22 356	2 861	2 709	73,8	72,3	76,5	68,7	Talas oblast
Чуйская область	109 479	111 512	3 108	2 921	86,4	80,4	99,3	89,7	Chui oblast
г.Бишкек	102 612	107 291	2 841	2 703	82,6	77,2	84,4	82,0	Bishkek city
Суточное потребление			2 711	2 604	74,2	70,5	78,1	74,3	Daily intake
Суточные потребности			2 100	2 100	71,0	71,0	72,0	72,0	Daily needs
Баланс: (+) или (-)			611	504	3	0	6	2	Balance: (+) or (-)

Таблица 4: (продолжение)

Table 4: (continued)

	Население, человек		Ккал в день на душу населения		Белки в день на душу населения, грамм		Жиры в день на душу населения, грамм		
	Number, people		C/Calories C/d/p		Proteins g/d/p		Fats g/d/p		
	9 месяцев / 9 months		9 месяцев / 9 months		9 месяцев / 9 months		9 месяцев / 9 months		
	2010	2011	2010	2011	2010	2011	2010	2011	
Население трудоспособного возраста	2 724 091	2 816 171							Working age population
Баткенская область	211 160	218 470	2 420	2 565	61,9	62,9	70,8	76,5	Batken oblast
Джалал-Абадская область	499 242	531 247	2 546	2 457	67,7	64,5	62,2	59,9	Djalal-Abad oblast
Иссык-Кульская область	225 332	229 192	2 559	2 585	66,1	68,0	68,0	70,3	Yssyk-Kul oblast
Нарынская область	118 958	119 699	2 317	2 331	64,2	66,0	56,9	55,2	Naryn oblast
Ошская область	647 653	666 388	2 405	2 364	62,8	61,6	62,8	62,7	Osh oblast
Таласская область	107 337	112 751	2 951	2 734	75,6	72,0	76,6	65,9	Talas oblast
Чуйская область	437 146	449 324	2 810	2 597	74,4	68,7	83,1	71,7	Chui oblast
г.Бишкек	477 263	489 100	2 589	2 392	71,5	65,7	71,5	66,7	Bishkek city
Суточное потребление			2 560	2 470	67,8	65,2	68,8	65,8	Daily intake
Суточные потребности			2 212	2 212	76,0	76,0	74,0	74,0	Daily needs
Баланс: (+) или (-)			348	258	-8	-11	-5	-8	Balance: (+) or (-)

Таблица 4: (продолжение)

Table 4: (continued)

	Население, человек		Ккал в день на душу населения		Белки в день на душу населения, грамм		Жиры в день на душу населения, грамм		
	Number, people		C/Calories C/d/p		Proteins g/d/p		Fats g/d/p		
	9 месяцев / 9 months		9 месяцев / 9 months		9 месяцев / 9 months		9 месяцев / 9 months		
	2010	2011	2010	2011	2010	2011	2010	2011	
Дети 1-17	2 001 033	1 961 485							Children aged 1-17 years
Баткенская область	171 901	161 752	1 924	2 095	48,1	51,2	55,8	62,5	Batken oblast
Джалал-Абадская область	403 733	381 934	2 029	1 995	54,1	52,3	48,8	47,6	Djalal-Abad oblast
Иссык-Кульская область	156 087	157 374	1 919	1 935	48,6	50,5	50,8	51,5	Yssyk-Kul oblast
Нарынская область	102 649	107 589	1 919	1 845	52,6	51,6	46,8	42,0	Naryn oblast
Ошская область	566 006	564 655	1 938	1 980	49,9	50,5	50,3	52,5	Osh oblast
Таласская область	96 161	94 248	2 145	2 021	55,0	53,1	55,4	47,5	Talas oblast
Чуйская область	254 191	245 895	2 084	1 997	53,5	52,3	59,4	53,5	Chui oblast
г.Бишкек	250 305	248 038	2 025	1 854	55,0	50,6	52,9	49,5	Bishkek city
Суточное потребление			1 992	1 970	52,0	51,3	52,0	51,2	Daily intake
Суточные потребности			1 920	1 920	69,0	69,0	66,0	66,0	Daily needs
Баланс: (+) или (-)			72	50	-17	-18	-14	-15	Balance: (+) or (-)

Таблица 4: (продолжение)

Table 4: (continued)

	Население, человек		Ккал в день на душу населения		Белки в день на душу населения, грамм		Жиры в день на душу населения, грамм		
	Number, people		C/Calories C/d/p		Proteins g/d/p		Fats g/d/p		
	9 месяцев / 9 months		9 месяцев / 9 months		9 месяцев / 9 months		9 месяцев / 9 months		
	2010	2011	2010	2011	2010	2011	2010	2011	
Дети 1-3 лет	337 204	305 943							Children aged 1-3 years
Баткенская область	30 542	27 516	1 270	1 504	33,4	37,7	36,2	45,1	Batken oblast
Джалал-Абадская область	62 671	56 419	1 303	1 229	34,6	31,7	31,0	28,9	Djalal-Abad oblast
Иссык-Кульская область	38 054	29 827	1 299	1 290	33,0	34,4	33,6	32,8	Yssyk-Kul oblast
Нарынская область	16 362	19 419	1 325	1 243	38,7	35,5	33,1	29,5	Naryn oblast
Ошская область	86 119	84 643	1 246	1 315	32,8	34,0	31,9	34,0	Osh oblast
Талаская область	16 261	17 345	1 536	1 368	39,2	36,0	40,0	32,8	Talas oblast
Чуйская область	51 517	32 087	1 561	1 311	41,0	35,3	43,2	34,6	Chui oblast
г.Бишкек	35 677	38 687	1 387	1 292	38,3	35,8	37,2	34,4	Bishkek city
Суточное потребление			1 346	1 309	35,6	34,5	35,0	33,7	Daily intake
Суточные потребности			1 661	1 661	62,0	62,0	59,0	59,0	Daily needs
Баланс: (+) или (-)			-315	-352	-26	-27	-24	-25	Balance: (+) or (-)

Таблица 4: (продолжение)

Table 4: (continued)

	Население, человек		Ккал в день на душу населения		Белки в день на душу населения, грамм		Жиры в день на душу населения, грамм		
	Number, people		C/Calories C/d/p		Proteins g/d/p		Fats g/d/p		
	9 месяцев / 9 months		9 месяцев / 9 months		9 месяцев / 9 months		9 месяцев / 9 months		
	2010	2011	2010	2011	2010	2011	2010	2011	
Дети 4-6 лет	304 691	303 237							Children aged 4-6 years
Баткенская область	25 670	26 562	1 627	1 772	42,3	43,7	46,0	52,9	Batken oblast
Джалал-Абадская область	52 183	53 793	1 777	1 719	47,6	45,2	43,9	42,0	Djalal-Abad oblast
Иссык-Кульская область	22 898	25 611	1 675	1 660	41,7	42,9	45,7	44,4	Yssyk-Kul oblast
Нарынская область	18 408	17 712	1 616	1 546	43,3	41,6	39,3	33,7	Naryn oblast
Ошская область	82 626	68 714	1 621	1 682	41,2	43,6	41,2	42,7	Osh oblast
Таласская область	17 989	16 477	1 778	1 685	45,5	44,4	44,6	39,6	Talas oblast
Чуйская область	37 345	49 471	1 798	1 666	46,7	43,5	51,1	44,5	Chui oblast
г.Бишкек	47 574	44 898	1 744	1 641	47,8	44,5	46,7	44,6	Bishkek city
Суточное потребление			1 702	1 678	44,5	43,9	44,5	43,5	Daily intake
Суточные потребности			1 661	1 661	62,0	62,0	59,0	59,0	Daily needs
Баланс: (+) или (-)			41	17	-17	-18	-14	-16	Balance: (+) or (-)

Таблица 4: (продолжение)

Table 4: (continued)

	Население, человек		Ккал в день на душу населения		Белки в день на душу населения, грамм		Жиры в день на душу населения, грамм		
	Number, people		C/Calories C/d/p		Proteins g/d/p		Fats g/d/p		
	9 месяцев / 9 months		9 месяцев / 9 months		9 месяцев / 9 months		9 месяцев / 9 months		
	2010	2011	2010	2011	2010	2011	2010	2011	
Дети 7-13 лет	817 385	797 600							Children aged 7-13 years
Баткенская область	69 331	66 370	2 042	2 193	50,6	53,0	58,6	64,9	Batken oblast
Джалал-Абадская область	179 099	157 274	2 150	2 085	57,5	54,4	51,3	49,2	Djalal-Abad oblast
Иссык-Кульская область	53 315	61 141	2 113	2 098	54,0	54,7	54,4	56,0	Yssyk-Kul oblast
Нарынская область	40 820	44 005	2 054	1 983	56,4	55,4	49,8	45,0	Naryn oblast
Ошская область	247 160	235 786	2 051	2 052	52,9	52,4	53,5	54,1	Osh oblast
Таласская область	35 191	35 962	2 238	2 187	57,1	57,6	57,2	51,0	Talas oblast
Чуйская область	93 560	96 258	2 146	2 178	55,7	57,9	62,0	58,3	Chui oblast
г.Бишкек	98 909	100 804	2 086	1 929	56,8	52,2	54,5	52,1	Bishkek city
Суточное потребление			2 099	2 076	54,9	54,1	54,6	53,8	Daily intake
Суточные потребности			2 031	2 031	73,0	73,0	70,0	70,0	Daily needs
Баланс: (+) или (-)			68	45	-18	-19	-15	-16	Balance: (+) or (-)

Таблица 4: (продолжение)

Table 4: (continued)

	Население, человек		Ккал в день на душу населения		Белки в день на душу населения, грамм		Жиры в день на душу населения, грамм		
	Number, people		C/Calories C/d/p		Proteins g/d/p		Fats g/d/p		
	9 месяцев / 9 months		9 месяцев / 9 months		9 месяцев / 9 months		9 месяцев / 9 months		
	2010	2011	2010	2011	2010	2011	2010	2011	
Дети 14-17 лет	541 752	554 705							Children aged 14-17 years
Баткенская область	46 358	41 303	2 342	2 539	57,3	62,1	69,9	76,3	Batken oblast
Джалал-Абадская область	109 781	114 447	2 365	2 378	63,0	62,9	57,0	57,3	Djalal-Abad oblast
Иссык-Кульская область	41 820	40 795	2 370	2 335	59,8	61,0	64,5	62,8	Yssyk-Kul oblast
Нарынская область	27 059	26 453	2 280	2 258	61,7	63,7	55,8	51,9	Naryn oblast
Ошская область	150 102	175 512	2 322	2 320	59,8	58,6	60,6	62,9	Osh oblast
Таласская область	26 721	24 464	2 639	2 466	68,1	64,5	69,6	58,3	Talas oblast
Чуйская область	71 769	68 079	2 526	2 306	63,1	58,9	72,1	62,1	Chui oblast
г.Бишкек	68 144	63 649	2 467	2 226	66,4	61,1	63,1	57,9	Bishkek city
Суточное потребление			2 395	2 341	62,0	60,7	63,0	61,3	Daily intake
Суточные потребности			2 244	2 244	78,0	78,0	74,0	74,0	Daily needs
Баланс: (+) или (-)			151	97	-16	-17	-11	-13	Balance: (+) or (-)

**Таблица 5: Баланс питания в виде энергетической ценности по результатам обследований
ежедневного потребления и оценки ежедневных потребностей**

(все население по квинтильным группам и регионам)

**Table 5: Food Balance expressed in nutritional values and compared to calculated daily needs, based on surveys of daily intake
and on calculated daily needs based on recurrent nutritional surveillance**

(total population by quintile groups and by region)

	Население, человек		Ккал в день на душу населения		Белки в день на душу населения, грамм		Жиры в день на душу населения, грамм		
	Number, people		C/Calories C/d/p		Proteins g/d/p		Fats g/d/p		
	9 месяцев / 9 months		9 месяцев / 9 months		9 месяцев / 9 months		9 месяцев / 9 months		
	2010	2011	2010	2011	2010	2011	2010	2011	
Первая квинтиль	1 084 864	1 095 392							First quintile
Баткенская область	100 684	111 470	1 744	2 058	44,0	49,6	46,7	58,8	Batken oblast
Джалал-Абадская область	297 739	284 985	2 056	2 021	56,1	53,7	51,2	49,3	Djalal-Abad oblast
Иссык-Кульская область	106 317	117 918	1 871	1 812	46,9	45,2	49,7	49,7	Yssyk-Kul oblast
Нарынская область	112 346	92 100	1 860	1 865	49,0	49,9	42,6	39,0	Naryn oblast
Ошская область	300 600	215 956	1 638	1 916	43,7	48,4	38,6	48,1	Osh oblast
Таласская область	74 557	92 694	1 956	1 930	48,8	49,8	48,5	43,8	Talas oblast
Чуйская область	80 476	165 749	1 770	1 896	45,1	48,3	45,9	47,0	Chui oblast
г.Бишкек	12 146	14 520	1 419	1 602	39,2	43,3	29,4	40,2	Bishkek city
Суточное потребление			1 838	1 936	48,4	49,7	45,4	48,3	Daily intake
Суточные потребности			2 101	2 101	73,0	73,0	71,0	71,0	Daily needs
Баланс: (+) или (-)			-263	-165	-25	-23	-26	-23	Balance: (+) or (-)

Таблица 5: (продолжение)

Table 5: (continued)

	Население, человек		Ккал в день на душу населения		Белки в день на душу населения, грамм		Жиры в день на душу населения, грамм		
	Number, people		C/Calories C/d/p		Proteins g/d/p		Fats g/d/p		
	9 месяцев / 9 months		9 месяцев / 9 months		9 месяцев / 9 months		9 месяцев / 9 months		
	2010	2011	2010	2011	2010	2011	2010	2011	
Вторая квинтиль	1 082 987	1 094 691							Second quintile
Баткенская область	111 213	108 943	2 055	2 093	50,1	50,5	59,8	63,3	Batken oblast
Джалал-Абадская область	295 810	282 791	2 292	2 168	61,5	56,9	55,0	49,6	Djalal-Abad oblast
Иссык-Кульская область	122 410	78 432	2 034	2 109	52,9	55,4	48,9	53,9	Yssyk-Kul oblast
Нарынская область	52 206	43 257	1 992	1 968	56,5	56,3	50,9	44,8	Naryn oblast
Ошская область	317 592	322 925	2 034	1 900	53,1	49,2	51,6	49,4	Osh oblast
Таласская область	69 633	60 889	2 396	2 278	61,7	60,1	60,9	54,5	Talas oblast
Чуйская область	90 090	109 244	2 284	2 227	57,3	57,8	60,6	59,5	Chui oblast
г.Бишкек	24 035	88 208	1 663	1 770	45,5	46,2	39,7	46,1	Bishkek city
Суточное потребление			2 140	2 049	55,9	53,3	54,1	52,0	Daily intake
Суточные потребности			2 101	2 101	73,0	73,0	71,0	71,0	Daily needs
Баланс: (+) или (-)			39	-52	-17	-20	-17	-19	Balance: (+) or (-)

Таблица 5: (продолжение)

Table 5: (continued)

	Население, человек		Ккал в день на душу населения		Белки в день на душу населения, грамм		Жиры в день на душу населения, грамм		
	Number, people		C/Calories C/d/p		Proteins g/d/p		Fats g/d/p		
	9 месяцев / 9 months		9 месяцев / 9 months		9 месяцев / 9 months		9 месяцев / 9 months		
	2010	2011	2010	2011	2010	2011	2010	2011	
Третья квинтиль	1 086 746	1 098 374							Third quintile
Баткенская область	92 384	84 872	2 365	2 308	61,3	56,3	71,1	70,0	Batken oblast
Джалал-Абадская область	225 796	243 739	2 267	2 190	59,5	56,7	52,7	53,8	Djalal-Abad oblast
Иссык-Кульская область	95 015	89 695	2 386	2 360	59,8	63,9	65,5	65,7	Yssyk-Kul oblast
Нарынская область	30 022	46 702	2 173	2 095	60,3	59,9	51,1	49,7	Naryn oblast
Ошская область	308 673	280 031	2 092	2 252	54,9	57,3	55,8	60,9	Osh oblast
Таласская область	53 664	28 693	2 714	2 858	69,3	74,6	70,4	71,2	Talas oblast
Чуйская область	166 974	176 206	2 273	2 222	59,9	59,6	63,0	58,3	Chui oblast
г.Бишкек	114 218	148 437	1 986	1 898	54,7	52,3	50,2	48,4	Bishkek city
Суточное потребление			2 227	2 208	58,4	57,9	58,4	58,1	Daily intake
Суточные потребности			2 101	2 101	73,0	73,0	71,0	71,0	Daily needs
Баланс: (+) или (-)			126	107	-15	-15	-13	-13	Balance: (+)or (-)

Таблица 5: (продолжение)

Table 5: (continued)

	Население, человек		Ккал в день на душу населения		Белки в день на душу населения, грамм		Жиры в день на душу населения, грамм		
	Number, people		C/Calories C/d/p		Proteins g/d/p		Fats g/d/p		
	9 месяцев / 9 months		9 месяцев / 9 months		9 месяцев / 9 months		9 месяцев / 9 months		
	2010	2011	2010	2011	2010	2011	2010	2011	
Четвертая квинтиль	1 079 335	1 093 788							Fourth quintile
Баткенская область	73 211	68 128	2 353	2 321	61,5	58,3	72,7	69,2	Batken oblast
Джалал-Абадская область	129 774	155 337	2 735	2 539	72,5	66,6	68,9	63,0	Djalal-Abad oblast
Иссык-Кульская область	61 638	87 521	2 635	2 454	68,8	64,4	72,4	66,9	Yssyk-Kul oblast
Нарынская область	38 496	49 329	2 342	2 223	67,5	67,8	62,3	58,0	Naryn oblast
Ошская область	261 435	302 168	2 344	2 240	60,0	60,8	63,8	58,9	Osh oblast
Таласская область	18 617	27 601	3 328	2 810	87,1	75,2	94,2	68,1	Talas oblast
Чуйская область	255 580	142 986	2 555	2 591	67,3	68,8	77,4	70,6	Chui oblast
г.Бишкек	240 584	260 718	2 201	2 126	59,5	58,1	58,9	56,8	Bishkek city
Суточное потребление			2 443	2 337	64,5	62,8	68,1	62,0	Daily intake
Суточные потребности			2 101	2 101	73,0	73,0	71,0	71,0	Daily needs
Баланс: (+) или (-)			342	236	-9	-10	-3	-9	Balance: (+) or (-)

Таблица 5: (продолжение)

Table 5: (continued)

	Население, человек		Ккал в день на душу населения		Белки в день на душу населения, грамм		Жиры в день на душу населения, грамм		
	Number, people		C/Calories C/d/p		Proteins g/d/p		Fats g/d/p		
	9 месяцев / 9 months		9 месяцев / 9 months		9 месяцев / 9 months		9 месяцев / 9 months		
	2010	2011	2010	2011	2010	2011	2010	2011	
Пятая квинтиль	1 084 367	1 095 375							Fifth quintile
Баткенская область	56 310	67 688	2 403	2 993	62,4	76,0	69,7	91,9	Batken oblast
Джалал-Абадская область	74 014	69 792	2 646	3 058	69,3	81,1	69,8	81,1	Djalal-Abad oblast
Иссык-Кульская область	55 943	70 954	3 382	3 315	88,8	88,8	99,1	91,8	Yssyk-Kul oblast
Нарынская область	26 308	30 749	2 281	2 462	65,8	69,8	61,6	65,1	Naryn oblast
Ошская область	188 658	265 653	2 879	2 470	73,7	62,5	80,5	69,7	Osh oblast
Таласская область	12 524	21 942	4 568	3 744	122,0	102,2	129,1	98,0	Talas oblast
Чуйская область	215 126	220 685	3 335	3 010	90,9	81,7	106,2	93,9	Chui oblast
г.Бишкек	455 485	347 912	2 679	2 599	75,1	72,9	76,4	77,8	Bishkek city
Суточное потребление			2 876	2 770	78,0	74,4	83,6	81,1	Daily intake
Суточные потребности			2 101	2 101	73,0	73,0	71,0	71,0	Daily needs
Баланс: (+) или (-)			775	669	5	1	13	10	Balance: (+) or (-)

Таблица 6: Продовольственный баланс домохозяйств в стоимостном выражении по результатам обследований уровня жизни

(все население по доходным квинтильным группам и регионам, сомов)

Table 6: Household Food Balance expressed in economic terms, based on results of living standard surveys

(total population by income quintile groups and by region, som)

	Население, человек		Среднедушевые доходы, сом/чел/месяц		Среднедушевые расходы на питание, сом/чел/месяц		Баланс, %		
	Number, people		Average per capita income, s/ps/month		Average per capita food expenditure, s/ps/month		Balance, %		
	9 месяцев / 9 months		9 месяцев / 9 months		9 месяцев / 9 months		9 месяцев / 9 months		
	2010	2011	2010	2011	2010	2011	2010	2011	
Все население	5 418 299	5 477 620							Total population
Баткенская область	433 802	441 101	2 297	2 989	790	1 115	34,4	37,3	Batken oblast
Джалал-Абадская область	1 023 132	1 036 644	2 326	2 454	840	1 050	36,1	42,8	Djalal-Abad oblast
Иссык-Кульская область	441 323	444 520	2 265	2 698	933	1 311	41,2	48,6	Yssyk-Kul oblast
Нарынская область	259 378	262 137	1 846	2 260	564	730	30,5	32,3	Naryn oblast
Ошская область	1 376 957	1 386 734	2 138	2 609	1 059	1 292	49,5	49,5	Osh oblast
Таласская область	228 995	231 819	1 770	2 187	764	975	43,2	44,6	Talas oblast
Чуйская область	808 245	814 870	2 802	2 925	1 269	1 414	45,3	48,3	Chui oblast
г.Бишкек	846 467	859 795	3 259	3 382	1 696	1 747	52,0	51,7	Bishkek city
Средневзвешенный баланс			2 441	2 751	1 080	1 283	44,3	46,6	Average weighted balance

Таблица 6: (продолжение)

Table 6: (continued)

	Население, человек		Среднедушевые доходы, сом/чел/месяц		Среднедушевые расходы на питание, сом/чел/месяц		Баланс, %		
	Number, people		Average per capita income, s/ps/month		Average per capita food expenditure, s/ps/month		Balance, %		
	9 месяцев / 9 months		9 месяцев / 9 months		9 месяцев / 9 months		9 месяцев / 9 months		
	2010	2011	2010	2011	2010	2011	2010	2011	
Первая квинтиль	1 085 524	1 091 829							First quintile
Баткенская область	76 482	54 553	898	1 185	590	802	65,7	67,6	Batken oblast
Джалал-Абадская область	209 694	226 751	880	1 024	514	724	58,5	70,7	Djalal-Abad oblast
Иссык-Кульская область	132 704	142 396	751	922	610	905	81,1	98,1	Yssyk-Kul oblast
Нарынская область	97 813	94 197	759	1 003	328	493	43,2	49,1	Naryn oblast
Ошская область	348 941	265 896	924	1 099	673	1 008	72,8	91,7	Osh oblast
Таласская область	81 969	79 538	780	958	568	715	72,8	74,6	Talas oblast
Чуйская область	101 515	164 745	896	935	714	1 043	79,7	111,5	Chui oblast
г.Бишкек	36 404	63 754	829	1 193	1 103	1 254	133,1	105,2	Bishkek city
Средневзвешенный баланс			861	1 027	608	879	70,6	85,6	Average weighted balance

Таблица 6: (продолжение)

Table 6: (continued)

	Население, человек		Среднедушевые доходы, сом/чел/месяц		Среднедушевые расходы на питание, сом/чел/месяц		Баланс, %		
	Number, people		Average per capita income, s/ps/month		Average per capita food expenditure, s/ps/month		Balance, %		
	9 месяцев / 9 months		9 месяцев / 9 months		9 месяцев / 9 months		9 месяцев / 9 months		
	2010	2011	2010	2011	2010	2011	2010	2011	
Вторая квинтиль	1 081 720	1 094 950							Second quintile
Баткенская область	121 543	86 751	1 482	1 814	620	769	41,9	42,4	Batken oblast
Джалал-Абадская область	184 056	210 802	1 412	1 757	741	1 008	52,5	57,4	Djalal-Abad oblast
Иссык-Кульская область	101 147	81 444	1 471	1 746	769	1 156	52,3	66,2	Yssyk-Kul oblast
Нарынская область	64 726	55 382	1 455	1 762	585	732	40,2	41,5	Naryn oblast
Ошская область	345 509	299 788	1 384	1 728	911	1 131	65,8	65,4	Osh oblast
Таласская область	54 196	49 175	1 425	1 735	635	804	44,5	46,3	Talas oblast
Чуйская область	109 779	149 302	1 444	1 724	915	1 069	63,4	62,0	Chui oblast
г. Бишкек	100 763	162 306	1 482	1 786	1 304	1 416	88,0	79,3	Bishkek city
Средневзвешенный баланс			1 429	1 752	840	1 079	58,8	61,6	Average weighted balance

Таблица 6: (продолжение)

Table 6: (continued)

	Население, человек		Среднедушевые доходы, сом/чел/месяц		Среднедушевые расходы на питание, сом/чел/месяц		Баланс, %		
	Number, people		Average per capita income, s/ps/month		Average per capita food expenditure, s/ps/month		Balance, %		
	9 месяцев / 9 months		9 месяцев / 9 months		9 месяцев / 9 months		9 месяцев / 9 months		
	2010	2011	2010	2011	2010	2011	2010	2011	
Третья квинтиль	1 083 189	1 099 777							Third quintile
Баткенская область	69 242	99 829	1 971	2 310	841	974	42,7	42,2	Batken oblast
Джалал-Абадская область	245 518	255 519	1 994	2 359	797	1 004	40,0	42,6	Djalal-Abad oblast
Иссык-Кульская область	71 714	69 571	2 032	2 294	947	1 244	46,6	54,2	Yssyk-Kul oblast
Нарынская область	29 038	30 477	1 978	2 361	606	815	30,6	34,5	Naryn oblast
Ошская область	233 372	341 652	1 992	2 329	1 094	1 324	54,9	56,9	Osh oblast
Таласская область	46 127	34 878	2 063	2 324	905	1 260	43,9	54,2	Talas oblast
Чуйская область	211 703	128 319	2 032	2 374	1 128	1 441	55,5	60,7	Chui oblast
г.Бишкек	176 477	139 531	2 025	2 400	1 326	1 495	65,5	62,3	Bishkek city
Средневзвешенный баланс			2 010	2 347	1 024	1 232	51,0	52,5	Average weighted balance

Таблица 6: (продолжение)

Table 6: (continued)

	Население, человек		Среднедушевые доходы, сом/чел/месяц		Среднедушевые расходы на питание, сом/чел/месяц		Баланс, %		
	Number, people		Average per capita income, s/ps/month		Average per capita food expenditure, s/ps/month		Balance, %		
	9 месяцев / 9 months		9 месяцев / 9 months		9 месяцев / 9 months		9 месяцев / 9 months		
	2010	2011	2010	2011	2010	2011	2010	2011	
Четвертая квинтиль	1 083 969	1 096 785							Fourth quintile
Баткенская область	102 802	111 613	2 767	3 122	923	1 120	33,4	35,9	Batken oblast
Джалал-Абадская область	205 634	208 257	2 697	3 031	1 030	1 179	38,2	38,9	Djalal-Abad oblast
Иссык-Кульская область	60 717	61 653	2 774	3 229	1 100	1 457	39,6	45,1	Yssyk-Kul oblast
Нарынская область	39 548	50 128	2 771	3 206	768	782	27,7	24,4	Naryn oblast
Ошская область	273 693	224 411	2 713	3 095	1 285	1 372	47,4	44,3	Osh oblast
Таласская область	26 870	45 338	2 767	3 114	1 083	1 160	39,1	37,3	Talas oblast
Чуйская область	161 991	193 349	2 739	3 139	1 491	1 431	54,4	45,6	Chui oblast
г. Бишкек	212 716	202 035	2 748	3 150	1 488	1 713	54,1	54,4	Bishkek city
Средневзвешенный баланс			2 733	3 117	1 238	1 352	45,3	43,4	Average weighted balance

Таблица 6: (продолжение)

Table 6: (continued)

	Население, человек		Среднедушевые доходы, сом/чел/месяц		Среднедушевые расходы на питание, сом/чел/месяц		Баланс, %		
	Number, people		Average per capita income, s/ps/month		Average per capita food expenditure, s/ps/month		Balance, %		
	9 месяцев / 9 months		9 месяцев / 9 months		9 месяцев / 9 months		9 месяцев / 9 months		
	2010	2011	2010	2011	2010	2011	2010	2011	
Пятая квинтиль	1 083 898	1 094 279							Fifth quintil
Баткенская область	63 735	88 355	5 126	5 858	1 086	1 799	21,2	30,7	Batken oblast
Джалал-Абадская область	178 230	135 314	5 003	5 229	1 163	1 547	23,3	29,6	Djalal-Abad oblast
Иссык-Кульская область	75 041	89 456	5 825	6 342	1 579	2 051	27,1	32,3	Yssyk-Kul oblast
Нарынская область	28 253	31 953	5 073	5 250	1 002	1 265	19,7	24,1	Naryn oblast
Ошская область	175 442	254 988	5 337	5 166	1 721	1 664	32,2	32,2	Osh oblast
Таласская область	19 833	22 889	4 774	5 383	1 168	1 450	24,5	26,9	Talas oblast
Чуйская область	223 257	179 155	5 112	5 920	1 668	2 006	32,6	33,9	Chui oblast
г.Бишкек	320 107	292 169	5 114	5 376	2 229	2 182	43,6	40,6	Bishkek city
Средневзвешенный баланс			5 174	5 512	1 692	1 870	32,7	33,9	Average weighted balance

Таблица 7: Продовольственный баланс домохозяйств в стоимостном выражении по результатам обследований уровня жизни
(все население по расходным квинтильным группам и регионам, сомов)

Table 7: Household Food Balance expressed in economic terms, based on results of living standard surveys
(total population by expenditure quintile groups and by region, som)

	Население, человек		Общие среднедушевые расходы, сом/чел/месяц		Среднедушевые расходы на питание, сом/чел/месяц		Баланс, %		
	Number, people		Total average per capita expenditures s/ps/month		Average per capita food expenditure, s/ps/month		Balance, %		
	9 месяцев / 9 months		9 месяцев / 9 months		9 месяцев / 9 months		9 месяцев / 9 months		
	2010	2011	2010	2011	2010	2011	2010	2011	
Все население	5 418 299	5 477 620							Total population
Баткенская область	433 802	441 101	2 105	2 501	790	1 115	37,5	44,6	Batken oblast
Джалал-Абадская область	1 023 132	1 036 644	1 710	2 070	840	1 050	49,1	50,7	Djalal-Abad oblast
Иссык-Кульская область	441 323	444 520	2 073	2 496	933	1 311	45,0	52,5	Yssyk-Kul oblast
Нарынская область	259 378	262 137	1 892	2 231	564	730	29,8	32,7	Naryn oblast
Ошская область	1 376 957	1 386 734	2 145	2 586	1 059	1 292	49,4	50,0	Osh oblast
Таласская область	228 995	231 819	1 583	2 042	764	975	48,3	47,8	Talas oblast
Чуйская область	808 245	814 870	2 772	2 967	1 269	1 414	45,8	47,7	Chui oblast
г.Бишкек	846 467	859 795	3 773	3 649	1 696	1 747	44,9	47,9	Bishkek city
Средневзвешенный баланс			2 366	2 658	1 080	1 283	45,7	48,3	Average weighted balance

Таблица 7: (продолжение)

Table 7: (continued)

	Население, человек		Общие среднедушевые расходы, сом/чел/месяц		Среднедушевые расходы на питание, сом/чел/месяц		Баланс, %		
	Number, people		Total average per capita expenditures s/ps/month		Average per capita food expenditure, s/ps/month		Balance, %		
	9 месяцев / 9 months		9 месяцев / 9 months		9 месяцев / 9 months		9 месяцев / 9 months		
	2010	2011	2010	2011	2010	2011	2010	2011	
Первая квинтиль	1 084 864	1 095 392							First quintile
Баткенская область	100 684	111 470	947	1 223	448	635	47,3	52,0	Batken oblast
Джалал-Абадская область	297 739	284 985	859	1 167	437	584	50,9	50,1	Djalal-Abad oblast
Иссык-Кульская область	106 317	117 918	914	1 103	535	692	58,5	62,8	Yssyk-Kul oblast
Нарынская область	112 346	92 100	750	949	306	384	40,8	40,5	Naryn oblast
Ошская область	300 600	215 956	880	1 219	566	760	64,4	62,3	Osh oblast
Таласская область	74 557	92 694	902	1 167	409	589	45,4	50,5	Talas oblast
Чуйская область	80 476	165 749	911	1 179	494	655	54,3	55,6	Chui oblast
г.Бишкек	12 146	14 520	732	1 257	339	745	46,3	59,3	Bishkek city
Средневзвешенный баланс			872	1 161	471	632	54,0	54,5	Average weighted balance

Таблица 7: (продолжение)

Table 7: (continued)

	Население, человек		Общие среднедушевые расходы, сом/чел/месяц		Среднедушевые расходы на питание, сом/чел/месяц		Баланс, %		
	Number, people		Total average per capita expenditures s/ps/month		Average per capita food expenditure, s/ps/month		Balance, %		
	9 месяцев / 9 months		9 месяцев / 9 months		9 месяцев / 9 months		9 месяцев / 9 months		
	2010	2011	2010	2011	2010	2011	2010	2011	
Вторая квинтиль	1 082 987	1 094 691							Second quintile
Баткенская область	111 213	108 943	1 400	1 720	694	867	49,6	50,4	Batken oblast
Джалал-Абадская область	295 810	282 791	1 394	1 725	674	926	48,4	53,7	Djalal-Abad oblast
Иссык-Кульская область	122 410	78 432	1 364	1 700	635	973	46,5	57,2	Yssyk-Kul oblast
Нарынская область	52 206	43 257	1 334	1 789	510	657	38,2	36,7	Naryn oblast
Ошская область	317 592	322 925	1 415	1 697	786	995	55,6	58,6	Osh oblast
Таласская область	69 633	60 889	1 352	1 732	700	870	51,8	50,2	Talas oblast
Чуйская область	90 090	109 244	1 405	1 794	791	1 040	56,3	58,0	Chui oblast
г.Бишкек	24 035	88 208	1 418	1 795	627	977	44,2	54,4	Bishkek city
Средневзвешенный баланс			1 393	1 730	707	945	50,7	54,6	Average weighted balance

Таблица 7: (продолжение)

Table 7: (continued)

	Население, человек		Общие среднедушевые расходы, сом/чел/месяц		Среднедушевые расходы на питание, сом/чел/месяц		Баланс, %		
	Number, people		Total average per capita expenditures s/ps/month		Average per capita food expenditure, s/ps/month		Balance, %		
	9 месяцев / 9 months		9 месяцев / 9 months		9 месяцев / 9 months		9 месяцев / 9 months		
	2010	2011	2010	2011	2010	2011	2010	2011	
Третья квинтиль	1 086 746	1 098 374							Third quintile
Баткенская область	92 384	84 872	1 829	2 291	785	1 079	42,9	47,1	Batken oblast
Джалал-Абадская область	225 796	243 739	1 852	2 264	974	1 160	52,6	51,2	Djalal-Abad oblast
Иссык-Кульская область	95 015	89 695	1 914	2 291	936	1 270	48,9	55,4	Yssyk-Kul oblast
Нарынская область	30 022	46 702	1 842	2 308	659	837	35,8	36,3	Naryn oblast
Ошская область	308 673	280 031	1 888	2 261	1 042	1 252	55,2	55,4	Osh oblast
Таласская область	53 664	28 693	1 864	2 223	938	1 262	50,3	56,8	Talas oblast
Чуйская область	166 974	176 206	1 901	2 267	967	1 323	50,9	58,4	Chui oblast
г.Бишкек	114 218	148 437	1 937	2 298	953	1 227	49,2	53,4	Bishkek city
Средневзвешенный баланс			1 882	2 273	960	1 210	51,0	53,2	Average weighted balance

Таблица 7: (продолжение)

Table 7: (continued)

	Население, человек		Общие среднедушевые расходы, сом/чел/месяц		Среднедушевые расходы на питание, сом/чел/месяц		Баланс, %		
	Number, people		Total average per capita expenditures s/ps/month		Average per capita food expenditure, s/ps/month		Balance, %		
	9 месяцев / 9 months		9 месяцев / 9 months		9 месяцев / 9 months		9 месяцев / 9 months		
	2010	2011	2010	2011	2010	2011	2010	2011	
Четвертая квинтиль	1 079 335	1 093 788							Fourth quintile
Баткенская область	73 211	68 128	2 754	2 962	1 062	1 312	38,6	44,3	Batken oblast
Джалал-Абадская область	129 774	155 337	2 530	2 988	1 303	1 505	51,5	50,3	Djalal-Abad oblast
Иссык-Кульская область	61 638	87 521	2 657	2 922	1 200	1 480	45,1	50,6	Yssyk-Kul oblast
Нарынская область	38 496	49 329	2 635	2 970	918	948	34,8	31,9	Naryn oblast
Ошская область	261 435	302 168	2 570	2 955	1 287	1 488	50,1	50,3	Osh oblast
Таласская область	18 617	27 601	2 605	2 873	1 203	1 350	46,2	47,0	Talas oblast
Чуйская область	255 580	142 986	2 640	3 024	1 258	1 540	47,6	50,9	Chui oblast
г.Бишкек	240 584	260 718	2 667	3 014	1 259	1 523	47,2	50,5	Bishkek city
Средневзвешенный баланс			2 624	2 979	1 241	1 466	47,3	49,2	Average weighted balance

Таблица 7: (продолжение)

Table 7: (continued)

	Население, человек		Общие среднедушевые расходы, сом/чел/месяц		Среднедушевые расходы на питание, сом/чел/месяц		Баланс, %		
	Number, people		Total average per capita expenditures s/ps/month		Average per capita food expenditure, s/ps/month		Balance, %		
	9 месяцев / 9 months		9 месяцев / 9 months		9 месяцев / 9 months		9 месяцев / 9 months		
	2010	2011	2010	2011	2010	2011	2010	2011	
Пятая квинтиль	1 084 367	1 095 375							Fifth quintile
Баткенская область	56 310	67 688	5 177	5 664	1 246	2 148	24,1	37,9	Batken oblast
Джалал-Абадская область	74 014	69 792	4 528	4 430	1 897	2 052	41,9	46,3	Djalal-Abad oblast
Иссык-Кульская область	55 943	70 954	5 453	5 426	2 046	2 558	37,5	47,1	Yssyk-Kul oblast
Нарынская область	26 308	30 749	6 846	5 392	1 142	1 357	16,7	25,2	Naryn oblast
Ошская область	188 658	265 653	5 218	4 703	2 015	1 906	38,6	40,5	Osh oblast
Таласская область	12 524	21 942	4 195	5 317	1 836	2 055	43,8	38,7	Talas oblast
Чуйская область	215 126	220 685	4 874	5 414	2 006	2 161	41,2	39,9	Chui oblast
г.Бишкек	455 485	347 912	5 023	5 271	2 205	2 374	43,9	45,0	Bishkek city
Средневзвешенный баланс			5 058	5 147	2 023	2 160	40,0	42,0	Average weighted balance

**Таблица 8. Индикаторы продовольственной безопасности
Кыргызской Республики**

Table 8. Food Security Indicators of the Kyrgyz Republic

Таблица 8.1. Уровень суточной энергетической ценности рациона человека

(ккал)

Table 8.1. Level of daily energy value of people diet

(k/Cal)

Период/Period	Фактическая ценность рациона ¹ /Actual dietary value ¹	Минимальная норма/Minimal ratio	Фактическое значение индикатора (гр. 2/гр.3)/Actual meaning of the indicator (paragraph 2/ paragraph 3)
1	2	3	4
Янв.-март /Jan-March 2007	2196	2431	0,90
янв.-июнь/Jan-June 2007	2184	2431	0,90
янв.-сент./Jan-Sept. 2007	2253	2431	0,93
2007	2218	2431	0,91
янв.-март/Jan-March 2008	2287	2431	0,94
янв.-июнь/Jan-June 2008	2277	2431	0,94
янв.-сент./Jan-Sept. 2008	2299	2431	0,95
2008	2295	2431	0,94
янв.-март/Jan-March 2009	2395	2431	0,99
янв.-июнь/Jan-June 2009	2348	2431	0,97
янв.-сент. /Jan-Sept. 2009	2356	2101	1,12
2009	2358	2101	1,12
янв.-март/Jan-March 2010	2380	2101	1,13
янв.-июнь/Jan-June 2010	2323	2101	1,11
янв.-сент./Jan-Sept. 2010	2305	2101	1,10
2010	2319	2101	1,10
янв.-март/Jan-March 2011	2338	2101	1,11
янв.-июнь/Jan-June 2011	2272	2101	1,08
янв.-сент./Jan-Sept. 2011	2260	2101	1,08

¹ По результатам интегрированного выборочного обследования бюджетов домашних хозяйств и рабочей силы./¹ According to results of the Integrated Sampling Survey of Household Budgets and Labour Force.

Таблица 8.2. Достаточность потребления отдельного продукта ²

(в среднем на душу населения, кг в месяц)

Table 8.2. Sufficiency of selected foods consumption²

(average per capita, kg. per month)

	Фактическое потребление/Actual consumption								
	Хлеб и хлебо- продукты/ Bread and bread products	Мясо и мясопро- дукты/Me at and meat products	Молоко и молочные продукты/ Milk and dairy products	Яйца (штук)/ Eggs (pieces)	Овощи и бахчевые/ Vegetables and melons	Фрукты и ягоды/ Fruits and berries	Картофель/ Potatoes	Сахар/ Sugar	Масло раститель- ное/ Vegetable oil
Янв.-март /Jan- March 2007	15,2	3,0	10,8	5,0	12,0	2,1	8,2	1,3	0,5
Янв.-июнь/Jan- June 2007	15,4	3,0	15,5	5,1	6,2	1,4	8,0	1,5	0,4
Янв.-сент./Jan- Sept. 2007	16,2	3,2	17,4	5,1	10,9	2,6	8,4	1,6	0,5
2007	15,3	2,9	17,4	5,9	12,2	3,0	8,0	1,8	0,5
Янв.-март/Jan- March 2008	15,3	3,0	10,9	5,2	12,2	2,1	8,2	1,4	0,5
Янв.-июнь/Jan- June 2008	15,4	3,0	15,7	5,2	6,2	1,2	8,0	1,6	0,5
Янв.-сент./Jan- Sept 2008	16,2	3,3	17,4	5,2	11,0	2,0	8,4	1,6	0,6
2008	15,9	3,1	18,1	6,3	12,6	2,5	8,3	1,8	0,6
Янв.-март/Jan- March 2009	16,1	3,2	12,2	5,9	12,7	0,9	8,3	1,7	0,9
Янв.-июнь/Jan- June 2009	16,0	3,1	16,5	5,5	6,6	0,5	8,4	1,7	0,7
Янв.-сент./Jan- Sept. 2009	16,6	3,4	18,1	5,3	12,0	2,2	8,5	1,6	0,6
2009	15,9	3,2	17,7	6,6	12,6	2,5	8,2	1,8	0,7
Янв.-март /Jan- March 2010	16,0	3,4	12,2	6,2	12,6	1,4	8,2	1,7	1,0
Янв.-июнь/Jan- June 2010	15,9	3,3	16,5	5,6	6,3	0,5	8,3	1,7	1,0
Янв.-сент./Jan- Sept. 2010	16,4	3,3	17,8	5,6	12,1	2,3	8,3	1,6	0,7
2010	15,9	3,2	17,7	6,6	12,5	2,5	8,1	1,8	1,0
Янв.-март/Jan- March 2011 ¹	16,1	3,5	12,3	6,2	10,5	1,0	8,3	1,6	1,0
Янв.-июнь/Jan- June 2011 ¹	15,9	3,3	16,5	5,9	4,4	0,5	8,1	1,7	1,0
Янв.-сент./Jan- Sept. 2011 ¹	16,3	3,3	17,7	5,7	12,0	2,3	8,3	1,5	1,0
2011 ¹	15,8	3,2	17,7	6,7	12,5	2,3	8,2	1,8	1,0
Янв.-март/Jan- March 2012 ¹	16,1	3,4	12,3	6,2	7,4	1,0	8,4	1,5	1,0

¹ Данные предварительные/Preliminary data

² В пересчете на первичный продукт./Expressed in primary product.

Таблица 8.3. Экономическая доступность продуктов питания
(в среднем на душу населения, сомов в месяц)

Table 8.3. Economical availability of foodstuffs
(average per capita, soms per month)

Период/Period	Размер среднемесячных затрат домохозяйств на питание/Monthly average expenditures of households for food	Размер среднемесячных совокупных затрат домохозяйств/Monthly average aggregated expenditures of households	Фактическое значение индикатора (гр. 2/гр.3)*100/Actual meaning of the indicator (paragraph 2/ paragraph 3)*100
1	2	3	4
Янв.-март /Jan-March 2007	567	1178	48
Янв.-июнь/Jan-June 2007	597	1280	47
Янв.-сент./Jan-Sept. 2007	675	1466	46
2007	720	1579	46
Янв.-март/Jan-March 2008	887	1600	55
Янв.-июнь/Jan-June 2008	984	1890	52
Янв.-сент./Jan-Sept 2008	1052	2090	50
2008	1093	2257	48
Янв.-март/Jan-March 2009	1089	2143	51
Янв.-июнь/Jan-June 2009	1076	2177	49
Янв.-сент./Jan-Sept. 2009	1089	2136	51
2009	1095	2264	48
Янв.-март /Jan-March 2010	1018	2198	46
Янв.-июнь/Jan-June 2010	1039	2241	46
Янв.-сент./Jan-Sept. 2010	1080	2366	46
2010	1106	2449	45
Янв.-март/Jan-March 2011	1233	2493	49
Янв.-июнь/Jan-June 2011	1263	2592	49
Янв.-сент./Jan-Sept. 2011	1283	2658	48

Таблица 8.4. Дифференциация расходов на питание по социальным группам

(в среднем на душу населения, сомов в месяц)

Table 8.4. Differentiation of expenditures for food by social groups

(average per capita, soms per month)

Период/Period	Первая квинтильная группа (с наименьшими доходами)/The first quintile group (with the lowest incomes)	Пятая квинтильная группа (с наибольшими доходами)/The fifth quintile group (with the highest incomes)
Янв.-март /Jan-March 2007	215	1129
Янв.-июнь/Jan-June 2007	243	1143
Янв.-сент./Jan-Sept. 2007	284	1275
2007	305	1317
Янв.-март/Jan-March 2008	309	1665
Янв.-июнь/Jan-June 2008	399	1792
Янв.-сент./Jan-Sept 2008	472	1836
2008	718	1565
Янв.-март/Jan-March 2009	708	1629
Янв.-июнь/Jan-June 2009	663	1623
Янв.-сент./Jan-Sept. 2009	670	1635
2009	648	1669
Янв.-март /Jan-March 2010	614	1574
Янв.-июнь/Jan-June 2010	583	1615
Янв.-сент./Jan-Sept. 2010	608	1692
2010	671	1680
Янв.-март/Jan-March 2011	790	1742
Янв.-июнь/Jan-June 2011	861	1809
Янв.-сент./Jan-Sept. 2011	879	1870

Таблица 8.5. Емкость внутреннего рынка отдельных продуктов ²
(тыс. тонн)

Table 8.5. Capacity of internal market of selected products²
(thsd. tons)

	Хлеб и хлебо- продукты/ Bread and bread products	Мясо и мясопро- дукты/ Meat and meat products	Молоко и молочные продукты/Milk and dairy products	Яйца (млн. штук)/ Eggs (mln. pieces)	Овощи и бахчевые/ Vegetables and melons	Фрукты и ягоды/ Fruits and berries	Картофель /Potatoes	Сахар/ Sugar	Масло раститель- ное/ Vegetable oil
Янв.-март /Jan- March 2007	237,3	46,3	168,8	78,5	188,4	32,3	128,2	20,0	7,5
Янв.-июнь/Jan- June 2007	483,1	92,6	487,1	158,7	194,8	43,4	250,1	48,4	13,1
Янв.-сент./Jan- Sept. 2007	761,2	150,1	818,9	242,3	512,1	124,3	394,3	75,4	24,9
2007	963,2	182,3	1094,1	371,7	766,8	188,5	502,5	111,1	31,4
Янв.-март/Jan- March 2008	241,6	48,1	171,9	81,7	193,1	32,9	129,5	22,8	7,7
Янв.-июнь/Jan- June 2008	487,1	93,6	494,9	163,9	196,1	37,5	252,0	50,8	16,1
Янв.-сент./Jan- Sept 2008	770,1	155,0	825,9	248,3	524,0	96,7	396,8	76,4	28,5
2008	968,3	191,8	1103,2	382,4	768,7	152,0	506,7	112,3	35,0
Янв.-март/Jan- March 2009	245,9	49,3	186,7	90,2	194,3	14,1	127,2	25,3	14,3
Янв.-июнь/Jan- June 2009	491,0	95,1	505,7	168,9	201,4	14,1	258,5	51,3	20,7
Янв.-сент./Jan- Sept. 2009	765,4	156,1	832,7	244,3	552,2	99,6	391,8	72,7	28,8
2009	976,9	198,9	1089,5	405,1	774,3	154,4	504,6	109,1	40,4
Янв.-март /Jan- March 2010	248,3	52,8	190,0	96,5	195,9	22,0	127,2	26,3	15,0
Янв.-июнь/Jan- June 2010	494,1	101,2	511,6	173,7	196,2	14,4	258,4	51,5	30,0
Янв.-сент./Jan- Sept. 2010	766,6	153,1	829,8	262,3	563,9	105,8	387,7	74,7	32,8
2010	991,7	201,0	1103,1	412,3	778,9	155,8	504,8	110,6	62,4
Янв.-март/Jan- March 2011 ¹	252,1	54,8	193,6	97,6	165,3	16,4	130,5	25,5	15,1
Янв.-июнь/Jan- June 2011 ¹	499,4	102,5	518,0	185,7	138,3	14,7	253,9	53,1	31,4
Янв.-сент./Jan- Sept. 2011 ¹	771,4	158,0	837,8	268,7	565,2	106,4	390,8	70,0	45,3
2011 ¹	996,9	203,9	1116,3	425,2	791,8	143,3	514,9	112,6	65,0
Янв.-март/Jan- March 2012 ¹	256,1	54,6	195,8	99,5	118,3	16,6	133,3	23,7	15,9

¹ Данные предварительные/Preliminary data

² В пересчете на первичный продукт./Expressed in primary product.

Таблица 8.6. Баланс фактического уровня производства продовольствия в Кыргызской Республике
(тыс.тонн)

Table 8.6. Balance of actual level of food production in the Kyrgyz Republic
(thsd. tons)

	Производство основных видов продовольствия/Production of main types of food								
	Пшеница в весе после доработки/ Wheat in net weight	Мясо в убойном весе/Meat in slaughter weight	Молоко о сырое/ Raw milk	Яйца (млн. штук)/Eggs (mln. pieces)	Овощи и бахчевые/ Vegetables and melons	Фрукты и ягоды/ Fruits and berries	Картофель /Potatoes	Сахар/ Sugar	Масло растительное/ Vegetable oil
Янв.-март /Jan-March 2007	-	42,2	204,5	70,1	-	-	-	-	4,5
Янв.-июнь/Jan-June 2007	24,5	84,9	570,8	190,5	32,7	1,8	21,9	9,5	7,4
Янв.-сент./Jan-Sept. 2007	678,6	132,3	973,6	293,7	711,6	122,5	974,3	16,0	11,2
2007	708,9	183,1	1240,0	373,7	908,9	180,5	1373,8	36,8	17,6
Янв.-март/Jan-March 2008	-	42,8	210,0	72,7	-	-	-	6,6	4,2
Янв.-июнь/Jan-June 2008	37,9	85,6	586,2	193,1	39,4	6,8	22,1	10,7	7,6
Янв.-сент./Jan-Sept 2008	720,0	133,3	998,7	292,4	742,5	140,8	976,7	10,8	11,0
2008	746,2	184,2	1273,5	369,3	947,0	185,4	1334,9	10,9	18,3
Янв.-март/Jan-March 2009	-	43,3	216,7	67,9	-	-	-	0,0	4,9
Янв.-июнь/Jan-June 2009	29,0	86,8	607,1	186,1	41,9	4,8	25,4	0,1	7,8
Янв.-сент./Jan-Sept. 2009	943,3	135,1	1032,6	291,1	791,4	155,8	899,3	0,2	12,1
2009	1056,7	185,5	1314,7	369,3	969,7	200,5	1393,1	5,9	20,6
Янв.-март /Jan-March 2010	-	44,1	224,2	71,5	-	-	-	0,0	5,6
Янв.-июнь/Jan-June 2010	9,5	88,1	628,4	191,4	28,0	3,7	19,0	0,0	9,5
Янв.-сент./Jan-Sept. 2010	756,3	138,7	1070,6	294,4	803,4	146,0	781,3	0,1	12,8
2010	813,3	187,8	1359,9	373,1	969,3	193,1	1339,4	14,0	18,1
Янв.-март/Jan-March 2011 ¹	-	44,4	223,8	73,8	-	-	-	0,0	4,7
Янв.-июнь/Jan-June 2011 ¹	11,1	89,0	627,5	201,8	31,9	4,1	22,4	0,0	8,1
Янв.-сент./Jan-Sept. 2011 ¹	778,6	136,5	1068,0	312,0	787,4	161,0	798,7	0,0	11,1
2011 ¹	799,8	189,5	1358,1	391,0	972,5	215,1	1379,2	17,0	15,6
Янв.-март/Jan-March 2012 ¹	-	43,8	226,2	76,4	-	-	-	0,0	4,2

¹ Данные предварительные/Preliminary data

Таблица 9. Индикаторы в области защиты детей

Table 9. Child protection indicators

Таблица 9.1. Число детей в учреждениях интернатного типа (возраст 0-17 лет)¹
(тысяч человек)

Table 9.1. Number of children in boarding schools (aged 0-17)¹
(thsd. people)

	2005	2006	2007	2008	2009	2010	2011	
Кыргызская Республика	5,1	5,0	5,1	5,3	5,6	5,0	5,3	Kyrgyz Republic
Баткенская область	0,3	0,3	0,3	0,3	0,3	0,3	0,3	Batken oblast
Джалал-Абадская область	0,2	0,2	0,2	0,2	0,2	0,2	0,2	Djalal-Abad oblast
Иссык-Кульская область	0,2	0,2	0,2	0,2	0,3	0,2	0,2	Issyk-Kul oblast
Нарынская область	-	-	-	-	0,1	-	-	Naryn oblast
Ошская область	0,4	0,4	0,4	0,4	0,4	0,4	0,4	Osh oblast
Таласская область	0,1	0,1	0,1	0,1	0,1	0,1	0,1	Talas oblast
Чуйская область	2,0	2,0	2,1	2,2	2,2	1,9	2,1	Chui oblast
г.Бишкек	1,6	1,5	1,5	1,6	1,7	1,6	1,7	Bishkek city
г.Ош	0,3	0,3	0,3	0,3	0,3	0,3	0,3	Osh city

¹ Включены дети, находящиеся в домах ребенка, детских домах, в школах-интернатах для детей с ограниченными возможностями здоровья, для трудновоспитуемых и в санаторно-лечебных школах./Including children who are in orphan asylum, children's home, boarding schools for disabled and intractable children, and in establishments which are training children during the long period of their treatment/therapy.

Таблица 9.2. Коэффициент детей в учреждениях интернатного типа (на 100 000 чел. в возрасте 0-17 лет)

Table 9.2. Coefficient of children in boarding schools (per 100 000 persons aged 0-17)

	2005	2006	2007	2008	2009	2010	2011	
Кыргызская Республика	263,2	258,4	262,9	273,4	282,0	249,3	260,6	Kyrgyz Republic
Баткенская область	170,7	171,3	171,6	172,2	175,4	172,7	170,0	Batken oblast
Джалал-Абадская область	48,6	48,7	48,8	48,8	48,9	48,5	48,0	Djalal-Abad oblast
Иссык-Кульская область	120,9	122,0	123,1	123,3	183,7	121,8	121,0	Issyk-Kul oblast
Нарынская область	-	-	-	-	93,5	-	-	Naryn oblast
Ошская область	87,8	88,0	88,3	88,5	87,4	86,7	85,6	Osh oblast
Таласская область	110,0	109,6	109,7	109,6	106,0	104,7	103,0	Talas oblast
Чуйская область	838,1	844,0	891,3	932,5	849,7	725,0	788,3	Chui oblast
г.Бишкек	794,2	730,6	714,6	742,3	716,1	660,7	683,5	Bishkek city
г.Ош	344,4	349,5	353,3	357,0	342,9	347,5	348,4	Osh city

Таблица 9.3. Число детей в домах ребенка (возраст 0-3 лет)
(человек)

Table 9.3. Number of children in orphan asylum (aged 0-3)
(persons)

	2005	2006	2007	2008	2009	2010	2011	
Кыргызская Республика	258	258	238	264	269	251	251	Kyrgyz Republic
Баткенская область	-	-	-	-	-	-	-	Batken oblast
Джалал-Абадская область	-	-	-	-	-	-	-	Djalal-Abad oblast
Иссык-Кульская область	-	-	-	-	-	-	-	Issyk-Kul oblast
Нарынская область	-	-	-	-	-	-	-	Naryn oblast
Ошская область	-	-	-	-	-	-	-	Osh oblast
Таласская область	-	-	-	-	-	-	-	Talas oblast
Чуйская область	98	103	85	98	103	99	99	Chui oblast
г.Бишкек	120	116	119	131	117	118	112	Bishkek city
г.Ош	40	39	34	35	49	34	40	Osh city

Таблица 9.4. Коэффициент детей в домах ребенка (на 100 000 чел.в возрасте 0-3 лет)

Table 9.4. Coefficient of children in orphan asylum (per 100 000 persons aged 0-3)

	2005	2006	2007	2008	2009	2010	2011	
Кыргызская Республика	62,5	59,9	53,3	56,8	55,4	48,7	46,7	Kyrgyz Republic
Баткенская область	-	-	-	-	-	-	-	Batken oblast
Джалал-Абадская область	-	-	-	-	-	-	-	Djalal-Abad oblast
Иссык-Кульская область	-	-	-	-	-	-	-	Issyk-Kul oblast
Нарынская область	-	-	-	-	-	-	-	Naryn oblast
Ошская область	-	-	-	-	-	-	-	Osh oblast
Таласская область	-	-	-	-	-	-	-	Talas oblast
Чуйская область	204,2	194,8	149,6	160,8	158,5	142,3	135,7	Chui oblast
г.Бишкек	235,6	208,5	197,1	203,4	186,3	171,8	152,5	Bishkek city
г.Ош	245,6	234,6	197,3	192,9	224,4	155,2	188,5	Osh city

Таблица 9.5. Число детей на попечении приемных родителей или опекунов (в возрасте 0-17 лет)
(тысяч человек)

Table 9.5. Number of children under the ward of adopting parents or guardian (aged 0-17)
(thsd. people)

	2005	2006	2007	2008	2009	2010	2011	
Кыргызская Республика	7,1	7,3	5,7	5,2	5,2	5,6	5,9	Kyrgyz Republic
Баткенская область	0,4	0,4	0,3	0,3	0,3	0,3	0,4	Batken oblast
Джалал-Абадская область	1,0	1,0	0,9	1,0	1,1	1,5	1,6	Djalal-Abad oblast
Иссык-Кульская область	1,0	1,0	0,7	0,9	0,7	0,7	0,8	Issyk-Kul oblast
Нарынская область	1,0	1,0	0,9	0,7	0,6	0,8	1,0	Naryn oblast
Ошская область	0,2	0,2	0,2	0,2	0,3	0,5	0,3	Osh oblast
Таласская область	0,4	0,4	0,1	0,1	0,1	0,1	0,1	Talas oblast
Чуйская область	1,0	1,2	1,4	0,9	1,1	1,0	1,0	Chui oblast
г.Бишкек	1,4	1,4	1,1	1,0	0,9	0,6	0,6	Bishkek city
г.Ош	0,7	0,7	0,1	0,1	0,1	0,1	0,1	Osh city

Таблица 9.6. Коэффициент детей на попечении приемных родителей или опекунов (на 100 000 чел.в возрасте 0-17 лет)

Table 9.6. Coefficient of children under the ward of adopting parents or guardian (per 100 000 persons aged 0-17)

	2005	2006	2007	2008	2009	2010	2011	
Кыргызская Республика	366,2	378,9	293,5	268,2	261,8	279,3	290,1	Kyrgyz Republic
Баткенская область	227,6	228,5	171,6	172,2	175,4	172,7	226,4	Batken oblast
Джалал-Абадская область	243,0	243,3	219,6	243,9	269,1	363,6	382,6	Djalal-Abad oblast
Иссык-Кульская область	604,6	609,9	430,8	555,0	428,7	426,4	484,8	Issyk-Kul oblast
Нарынская область	864,0	870,2	787,8	614,9	561,2	745,0	926,8	Naryn oblast
Ошская область	43,9	44,0	44,2	44,3	65,6	108,4	64,2	Osh oblast
Таласская область	440,0	438,5	109,7	109,6	106,0	104,7	103,0	Talas oblast
Чуйская область	419,1	506,4	594,2	381,5	424,8	381,6	375,4	Chui oblast
г.Бишкек	694,9	681,8	524,1	464,0	379,1	247,8	241,2	Bishkek city
г.Ош	803,6	815,5	117,8	119,0	114,3	115,8	116,1	Osh city

Таблица 9.7. Усыновление/удочерение

(человек)

Table 9.7. Adoption

(persons)

	2005	2006	2007	2008	2009	2010	2011	
Кыргызская Республика	924	842	916	971	1064	936	1065	Kyrgyz Republic
Баткенская область	28	55	42	21	30	69	40	Batken oblast
Джалал-Абадская область	122	112	84	154	172	161	146	Djalal-Abad oblast
Иссык-Кульская область	55	43	110	58	200	102	154	Issyk-Kul oblast
Нарынская область	117	103	15	23	62	84	122	Naryn oblast
Ошская область	95	89	98	57	82	70	79	Osh oblast
Таласская область	70	48	90	49	96	46	83	Talas oblast
Чуйская область	199	187	271	430	222	230	214	Chui oblast
г.Бишкек	167	139	163	101	140	133	169	Bishkek city
г.Ош	71	66	43	78	60	41	58	Osh city

Таблица 9.8. Коэффициент усыновленных/удочеренных (на 100 000 чел. в возрасте 0-17 лет)

Tables 9.8. Coefficient of adopted children (per 100 000 persons aged 0-17)

	2005	2006	2007	2008	2009	2010	2011	
Кыргызская Республика	47,6	43,4	47,3	50,1	53,6	46,7	52,4	Kyrgyz Republic
Баткенская область	15,9	31,4	24,0	12,1	17,5	39,7	22,6	Batken oblast
Джалал-Абадская область	29,6	27,3	20,5	37,6	42,1	39,0	34,9	Djalal-Abad oblast
Иссык-Кульская область	33,3	26,2	67,7	35,8	122,5	62,1	93,3	Issyk-Kul oblast
Нарынская область	101,1	89,6	13,1	20,2	58,0	78,2	113,1	Naryn oblast
Ошская область	20,8	19,6	21,6	12,6	17,9	15,2	16,9	Osh oblast
Таласская область	77,0	52,6	98,7	53,7	101,7	48,2	85,5	Talas oblast
Чуйская область	83,4	78,9	115,0	182,3	85,7	87,8	80,3	Chui oblast
г.Бишкек	82,9	67,7	77,7	46,9	59,0	54,9	68,0	Bishkek city
г.Ош	81,5	76,9	50,6	92,8	68,6	47,5	67,4	Osh city

***FOOD SECURITY AND POVERTY INFORMATION BULLETIN
OF THE KYRGYZ REPUBLIC***

Statistical bulletin

Responsible for publication:
Galina Samohleb
Janybek Esengeldiev

Tel: (+996312) 324655,
625591

Date of printing: june 2012
Format A4 60x84 1/8
Offset printing

Copies: 35

Volume 9 p.1.
Order №136

*Printing and Publication Department
Main Computing Center of the Natstatcom
of the Kyrgyz Republic*

NATIONAL STATISTICAL COMMITTEE OF THE KYRGYZ REPUBLIC

QUESTIONNAIRE

for defining user needs in statistical information

Dear user of statistical information,

In order to improve the quality of statistical information and meet demands of all user categories the National Statistical Committee of the Kyrgyz Republic proposes you to answer our questions:

Does this publication meet your needs?

What kind of indicators would you like to see in this publication?

We would be very appreciated if you inform us about shortcomings of our work or give your comments and proposals for improvement of our activity in the field of statistics. Your opinion is very important for us and will be considered mandatory.

Please, send your wishes and recommendations to the following e-mail address: chturdubaeva@stat.kg or NSC Web site www.stat.kg. (Column "Feedback")

Thank you for cooperation