



**The National Statistical Committee  
of the Kyrgyz Republic**

**FOOD SECURITY AND POVERTY  
INFORMATION BULLETIN OF THE  
KYRGYZ REPUBLIC**

**4 / 2012**

**Bishkek city 2013**

**The National Statistical Committee  
of the Kyrgyz Republic**

---

**FOOD SECURITY AND POVERTY  
INFORMATION BULLETIN OF THE  
KYRGYZ REPUBLIC**

**4 / 2012**

**Bishkek city 2013**

Editorial Board:

Chairman - A. Osmonaliev

- Members:
- D. Baijumanov
  - L. Tekeeva
  - K. Isaliev
  - K. Koichumanova
  - R. Plesovskih
  - Ch. Turdubaeva

Food security and poverty information bulletin of the Kyrgyz Republic - B.:  
Natstatcom of the Kyrgyz Republic, 2013:- 131C

**Food security and poverty information bulletin of the Kyrgyz Republic** contains the analysis of the situation on food provision in the country for 2012. The bulletin combines and systematizes materials on food availability, its production, indicators of access to food, data on its consumption per capita.

Annexes of the bulletin contain review of hydro-meteorological conditions on the territory of the Kyrgyz Republic in the IV<sup>th</sup> quarter of 2012, information on average retail prices for food for the IV<sup>th</sup> quarter of 2012, estimates on food balance for 2012 by basic foodstuff, nutrition balance in kind of energy value by results of integrated survey of 5016 households for the I<sup>st</sup> half of 2011-2012, as well as food security indicators.

While using statistical data in mass media and scientific papers, disseminating these data through information nets, hard copies, CD discs and other, users have to refer to their source (article 17 of the Law on State Statistics).

**Conventional signs:**

- Event is not existing;
- ... Data are not available;
- 0,0 Negligible and insignificant value.

In separate cases insignificant discrepancies between total and sum of components are explained by rounding.

Internet: [www.stat.kg](http://www.stat.kg)  
e-mail: [nsc\\_mail@stat.kg](mailto:nsc_mail@stat.kg)  
© Natstatcom KR, 2013

## Contents

Overview	4
Introduction	5
Section I. Socio-Economic Indicators	6
1.1. Gross Domestic Product	6
1.2. Prices and Tariff Indices	6
1.3. Labour Market	9
Section II. Availability of Food	10
2. Agriculture	10
2.1. Crop production	10
2.2. Livestock Production	12
2.3. Producer Price Index of Agricultural Production	13
2.4. Trade of Basic Foodstuffs	14
2.5. Availability of Food Per Capita	15
Section III. Access to Food	16
3.1. Consumer Prices Analysis	16
3.2. Money Income of Population	17
Section IV. Additional materials	
4.1. About Food Security Indicators	20
4.2. About results of livestock and poultry recording in the Kyrgyz Republic as of the end of 2012	21
Methodological explanations	25
List of Abbreviations	26
Annex:	
1. Review of Hydro-meteorological Conditions on the territory of the Kyrgyz Republic in the 4 <sup>th</sup> quarter of 2012	27
2. Average Consumer Prices for Food (by regions, 4 <sup>th</sup> quarter of 2011-2012)	28
3. Food Balance	31
4. Food Balance expressed in nutritional values and compared to calculated daily needs based on surveys of daily intake and calculated daily needs based on recurrent nutritional surveillance by Socio-Demographic Groups of Population and Regions (1 <sup>st</sup> half of 2011-2012)	33
5. Food Balance expressed in nutritional values and compared to calculated daily needs based on surveys of daily intake and calculated daily needs based on recurrent nutritional surveillance by Quintile Groups and Regions (1 <sup>st</sup> half of 2011-2012)	41
6. Household Food Balance expressed in value terms based on results of surveys of living standard by Income Quintile Groups and Regions (1 <sup>st</sup> half of 2011-2012)	46
7. Household Food Balance expressed in value terms based on results of surveys of living standard by Expenditure Quintile Groups and Regions (1 <sup>st</sup> half of 2011-2012)	52
8. Share of population using adequately iodized salt	58
9. Food Security Indicators of the Kyrgyz Republic	59

## OVERVIEW

*Gross domestic product (GDP) calculated by production method, in 2012, according to preliminary estimation, has been valued at 304350,1 million KG Soms and has decreased by 0,9% in comparison with 2011.*

*Page 6*

*In December 2012, Consumer Price Index (CPI) characterizing inflation rate, in comparison with the previous month has made up 101,5% and in comparison with December 2011 – 107,5%.*

*Page 7*

*In January-December 2012, gross output of agriculture, hunting and forestry products was valued at 167505,3 million KG Soms and the physical volume index has made up 101,2%.*

*Page 10*

*In 2012, grain harvest (excluding grain and leguminous, rice and buckwheat) by country as a whole was less by 151,2 thsd. tons, or by 10,2% in net weight including wheat – by 32,4% than in the previous year.*

*Page 11*

*In January-December 2012, producer prices for sold agricultural products have increased by 1,6% in comparison with the corresponding period of the previous year.*

*Page 13*

## Introduction

Pursuant the Rome Declaration, adopted on November 17, 1996 during the World Food Summit, the Kyrgyz Republic as a member of the international community assumed responsibility to "...conduct a policy aimed to the alleviation of poverty and inequality, provision of physical and economical access to all people and at all times to sufficiently dietary adequate food and as well as to its use".

In 1999, the Government of the Kyrgyz Republic, in cooperation with the European Commission in the Kyrgyz Republic has developed and adopted a National Food Security Policy. The policy (and EC funding under the EC-Food Security Programme) sustains reforms in food security related to such sectors as agriculture and social protection.

**Food security** is a physical availability of a foodstuff in the required quantity, possibility of access to indicated foodstuff (the products made in households, and acquired through the market, gifts and other sources) and consumption of foodstuff in that quantity which are necessary for maintenance of food needs.

Food and nutrition security presumes the availability of adequate food (in the context of quantity, quality, safety and social and cultural acceptability), provision of access and adequate consumption and digestion of such products by all persons at any time for an active and healthy life.

**Food Availability:** physical existence of quantitatively and qualitatively adequate and safety food items at any moment of time.

**Access:** all households and household members have sufficient resources to obtain appropriate food (through production, purchase or donation).

**Stability:** continuous provision of availability, access and use of food. If there is no stability, individuals will suffer from chronic or transitory food insecurity

The aim of the KR Food Security and Poverty Information Bulletin is to provide up-to-date and reliable information and analysis of the current food security situation in the country.

The publication of information bulletin on food security was prepared by the National Statistical Committee of the Kyrgyz Republic. The publication contains information provided by Ministry of Agriculture and Reclamation of the Kyrgyz Republic, State Agency on Hydro Meteorology of the Ministry of Emergency of the Kyrgyz Republic. The bulletin was financed by the European Commission in the Kyrgyz Republic and technical support was provided by UN FAO.

## Section I. Socio-Economic Indicators

*The below socio-economic indicators characterizes the general situation of economy in the country for the analysis of food security situation.*

### 1.1. Gross Domestic Product

**Gross domestic product (GDP)** calculated by *production method*, in 2012, according to preliminary estimation, has been valued at 304350,1 million KG Soms and has decreased by 0,9% in comparison with 2011. Real growth rate of GDP excluding «Kumtor» mining company made up 5%. The volume of GDP calculated per capita made up 56,9 thsd. soms and in comparison with the previous year has decreased by 2,6%.

**Table 1: Main socio-economic indicators**

	2011	2012 <sup>1</sup>
Average annual number of present population, mln. people	5,26	5,35
Nominal GDP, mln.soms	285989,1	304350,1
in % to GDP:		
agriculture	16,6	17,5
industry and construction	27,4	22,5
services	45,0	46,6
GDP per capita, thsd. soms	54,4	56,9
GDP growth rate, %	106,0	99,1
CPI <sup>2</sup>	116,6	102,8
CPI for foodstuff and nonalcoholic beverages (soft drinks) <sup>2</sup>	125,0	95,9
CPI for services <sup>2</sup>	111,6	110,2
Number of employed population thsd. people <sup>5</sup>	2277,7	-
Average monthly wage and salary, soms	9304	10891 <sup>3</sup>
Import, mln. US dollars <sup>4</sup>	4261,2	5373,9
Export, mln. US dollars <sup>4</sup>	2242,2	1893,8
Exchange rate of KG som to <sup>5</sup> :		
US dollars	46,14	47,00
Euro	64,35	60,44
RUR	1,58	1,51
KZT	0,31	0,31
Subsistence level, soms	4390,02	4341,15

<sup>1</sup> Data are preliminary.

<sup>2</sup> As a % to the corresponding period of the previous year.

<sup>3</sup> Excluding small enterprises.

<sup>4</sup> Including volumes of external trade implemented by individuals.

<sup>5</sup> According to data of the National Bank of the Kyrgyz Republic.

### 1.2. Prices and Tariff Indices

In December 2012, *Consumer Price Index (CPI)* characterizing inflation rate, in comparison with the previous month has made up 101,5% and in comparison with December 2011 – 107,5%.

In December 2012, prices for *foodstuff and nonalcoholic beverages (soft drinks)* have increased, in general, by 1,8% in comparison with the previous month.

The highest increase of prices was for vegetables (by 20,1%), dairy products, cheese and eggs (by 4,3%), baked pastry (by 1,3%).

In December 2012, prices for alcoholic beverages have increased by 4,8% in comparison with previous month.

At the same time, in December 2012, prices for flour, cereals, fresh milk, animal fat and apples have decreased

**Table 2: Price index for main types of food products in 2012**

(as a % to the previous month)

	Wheat flour		Bread	Ashcake	Beef	Mutton	Milk (poured)	Eggs	Granulated sugar	Sunflower oil
	High quality	First grade								
January	98,0	94,9	99,4	99,7	102,0	100,8	103,7	101,9	100,8	99,7
February	99,2	96,9	99,4	99,7	99,5	100,1	101,5	98,2	99,0	99,3
March	99,4	98,7	99,3	99,6	97,6	99,2	97,9	99,0	100,1	98,9
I quarter <sup>1</sup>	96,5	90,8	98,1	99,0	99,0	100,2	103,1	98,9	99,8	97,9
April	99,7	99,5	99,9	100,0	98,7	100,8	93,2	100,1	99,1	98,6
May	98,7	98,1	99,9	100,0	98,9	104,3	93,0	95,1	109,3	99,2
June	98,4	98,4	99,7	99,9	98,8	100,7	97,8	90,6	98,3	99,2
II quarter <sup>1</sup>	96,9	96,1	99,6	99,9	96,4	106,0	84,8	86,2	106,5	97,1
July	103,5	104,0	102,2	102,6	99,7	98,9	96,5	96,0	96,6	100,1
August	112,0	114,1	109,5	112,5	100,1	99,2	100,0	100,4	98,8	100,4
September	100,4	102,3	100,3	100,3	99,7	99,6	110,3	105,1	95,3	103,1
III quarter <sup>1</sup>	116,3	121,3	112,3	115,8	99,5	97,8	106,4	101,3	91,0	103,6
October	105,8	109,0	106,6	103,7	101,2	98,2	108,5	107,1	97,4	102,1
November	101,9	100,8	100,9	101,5	100,1	96,6	103,2	104,3	99,9	100,3
December	100,0	99,5	100,1	100,0	99,4	98,7	107,4	103,7	100,5	100,0
IV quarter <sup>1</sup>	107,8	109,4	107,7	105,3	100,7	93,6	120,3	115,8	97,8	102,4

<sup>1</sup> Cumulative total for three months of the quarter.

In December 2012, prices for fresh vegetables have increased by 19,3% and, against, prices for fresh fruits have decreased by 0,4% in comparison with the previous month.

**Table 3: Price index for selected types of fruits and vegetables in 2012**

(as a % to the previous month)

	Carrot	Onion	Cabbage	Beet	Tomato	Cucumber	Apples	Potatoes
January	95,9	97,6	111,6	101,7	126,1	109,8	101,0	97,3
February	93,7	94,9	104,0	99,4	116,0	81,7	105,3	94,8
March	97,3	97,7	94,9	98,3	121,4	100,2	105,7	91,0
I <sup>st</sup> quarter <sup>1</sup>	87,4	90,5	110,3	99,3	177,6	89,9	112,4	84,0
April	96,6	91,4	94,7	93,7	88,1	82,2	103,7	96,2
May	123,7	113,8	110,4	108,8	89,5	64,0	105,5	135,3
June	116,1	136,0	111,1	122,3	45,9	37,1	128,8	90,6
II <sup>nd</sup> quarter <sup>1</sup>	138,7	141,4	116,2	124,7	36,2	19,5	140,9	117,9
July	112,4	96,6	89,0	103,8	64,2	70,2	99,3	79,5
August	114,6	97,9	124,8	87,0	42,1	103,8	90,4	87,5
September	93,9	93,1	132,6	108,1	106,8	153,4	86,8	94,2
III <sup>rd</sup> quarter <sup>1</sup>	121,0	88,0	147,3	97,6	28,9	111,9	77,9	65,5
October	80,6	81,7	86,6	99,8	159,3	B 1,9 p.	94,5	97,8
November	92,9	92,5	90,4	105,7	B 2,9 p.	B 1,6 p.	93,7	111,2
December	119,8	122,7	113,9	114,5	133,9	121,2	95,2	131,0
IV <sup>th</sup> quarter <sup>1</sup>	89,7	92,7	89,1	120,8	B 6,2 p.	B 3,6 p.	84,2	142,4

<sup>1</sup> Cumulative total for three months of the quarter.



Totally, in 2012 (in comparison with December 2011) prices for foodstuff and nonalcoholic beverages (soft drinks) have increased by 4,5%. Prices for fresh fruits (by 27,2%), fish (by 20,0%), bread (by 18,4%), flour (by 16,3%), milk and dairy products (by 11,6%) have increased significantly. At the same time, in 2012, prices for cereals (by 29,6%), animal fats ( by 11,5%), granulated sugar (by 5,4%), cotton oil (by 4,9%), fresh meat (by 3,1%) and rice (by 0,9%) have decreased.

In 2012, prices for alcoholic beverages (by 11,6%) and tobacco (by 6,2%) have increased.

**Table 4: Price index for selected groups of food products**

(as a %)

	December 2012		January-December 2012 to January-December 2011
	to December 2011	to November 2012	
Bakery products and grains	109,3	100,2	92,5
Meat	98,8	99,5	106,7
Fish	120,0	100,2	118,4
Milk products, cheese and eggs	108,0	104,3	106,0
including eggs	100,0	103,7	102,9
Oils and fats	99,1	100,4	99,3
Fruits	123,1	99,7	99,0
Vegetables	102,7	120,1	75,8
Sugar, jam, honey, chocolate and sweets	98,9	100,6	93,7
Nonalcoholic beverages (soft drinks)	103,7	100,6	105,5
Alcoholic beverages	111,6	104,8	109,2

In December 2012, in comparison with the previous month, average prices for potatoes have increased significantly.

**Table 5: Average prices for selected representative goods in 2012**

((som per kilo)

	Wheat flour		Bread	Ashcake	Mutton	Beef	Potato
	High quality	High quality					
January	31,16	25,53	36,11	42,89	293,00	312,65	14,65
February	30,87	24,74	35,90	42,76	293,34	311,02	13,93
March	30,67	24,41	35,63	42,55	291,12	303,26	12,66
April	30,56	24,29	35,61	42,55	293,44	299,18	12,26
May	30,17	23,85	35,58	42,54	306,12	295,73	16,53
June	29,68	23,47	35,48	42,52	308,49	292,03	24,51 <sup>1</sup>
July	30,70	24,38	36,27	43,64	305,31	291,17	18,35
August	34,29	27,77	39,69	49,00	302,91	291,40	17,67
September	34,40	28,42	39,81	49,16	301,85	290,57	16,37
October	36,43	30,98	42,39	50,96	296,53	294,04	15,82
November	37,10	31,24	42,77	51,73	286,23	294,30	17,77
December	37,10	31,09	42,81	51,74	282,54	292,59	23,60

<sup>1</sup> Including potatoes from new crop.

In January-December 2012, import of foodstuff has made up 11,1% of total volume of import.

**Table 6: Import and export of foodstuff <sup>1</sup>**

	2011		2012	
	mln. dollars	as a percent to total volume	mln. dollars	as a percent to total volume
Import	4261,2	65,5	5373,9	73,9
Export	2242,2	34,5	1893,8	26,1

<sup>1</sup> Including volumes of external trade implemented by individuals.

### 1.3. Labour Market

As of January 1, 2013, according to the data of the Ministry of Youth, Labor and Employment of the Kyrgyz Republic, the number of unemployed population registered in state employment services who search for work, in comparison with the same date of 2012, has increased by 0,3% and the number of unemployed has decreased by 1,2%. The registered unemployment rate has made up 2,4% of the economically active population. From total number of registered unemployed population, 51% were women. There were on the average 8 unemployed persons per one vacant position announced by enterprises.

**Table 7: The number of unemployed population registered in state employment services, as of January 1, 2013**

	Total thsd. people	as a percent to the corresponding date of the previous year	as a percent to the corresponding date of the previous month
<b>Kyrgyz Republic</b>	<b>60367</b>	<b>98,8</b>	<b>98,7</b>
Batken oblast	5563	97,6	99,3
Djalal-Abad oblast	12305	105,7	97,9
Issyk-Kul oblast	3938	89,9	99,3
Naryn oblast	6580	101,8	100,5
Osh oblast	12165	97,7	95,6
Talas oblast	2152	93,1	102,0
Chui oblast	5904	96,9	99,3
Bishkek city	9314	96,3	100,9
Osh city	2446	103,1	99,8

## Section II. Availability of Food

**Availability of food** – is a physical availability of safety and sufficient, quantitative and qualitative food at any time.

### 2. Agriculture

In January-December 2012, gross output of agriculture, hunting and forestry products was valued at 167505,3 million KG Soms and the physical volume index has made up 101,2%.

**Table 8: Output of agricultural products**

	As a percent to			
	the corresponding period of the previous year		the previous month	
	2011	2012	2011	2012
January	100,6	100,8	-	-
February	100,3	100,8	105,8	105,3
March	100,5	100,8	104,2	107,3
January-March	100,5	100,8	-	-
April	100,6	101,2	107,6	110,8
May	101,2	101,3	141,1	166,8
June	103,4	102,2	141,1	131,6
January-June	101,3	101,4	-	-
July	103,9	99,8	226,0	224,4
August	101,5	99,2	97,0	94,1
September	103,7	109,2	143,8	151,8
January-September	102,5	102,8	-	-
October	102,4	95,0	78,9	56,8
November	99,9	95,6	42,9	47,9
December	97,4	100,8	85,2	75,5
January-December	102,0	101,2	-	-

Significant increase of feed crops production (by 5,9%) influenced the increase of gross output, which determined the growth of crop products by 0,6%.

From total production the share of livestock production has made up 47,8%, crop production - 50,5%, services – 1,6%, hunting and forestry – 0,1%. The share of peasant farms in total production volume has made up 60,2%, private subsidiary plots of citizens - 36,3%.

**Table 9: Gross output of agriculture, hunting and forestry products by territory in 2012**

	Mln. soms (in current prices)	As a percent to	
		the previous year	total
<b>Kyrgyz Republic</b>	<b>167505,3</b>	<b>101,2</b>	<b>100,0</b>
Batken oblast	16408,3	108,3	9,8
Djalal-Abad oblast	31202,7	107,1	18,6
Issyk-Kul oblast	21175,8	93,6	12,7
Naryn oblast	11938,7	99,1	7,1
Osh oblast	33140,1	105,6	19,8
Talas oblast	13948,3	100,0	8,3
Chui oblast	38537,3	95,9	23,0
Bishkek city	445,9	90,9	0,3
Osh city	708,2	100,6	0,4

#### 2.1. Crop production

In 2012, total sown area used for agricultural crops has made up 1165,7 thsd. hectares, that was higher by 6,5 thsd. hectares (by 0,6%) than in the previous year. Grain crops (excluding grain and leguminous, rice and

buckwheat) have made up 568,6 thsd. hectares (48,8% of total sown area), grain and leguminous, respectively - 49,2 thsd. hectares (4,2%), oil plants - 54,5 thsd. (4,7%), cotton - 31 thsd. (2,6%), tobacco - 3,4 thsd. (0,3%), sugar beet (manufactured) - 5,6 thsd. (0,5%), potatoes - 81,6 thsd. (7,0%), vegetables - 45,4 thsd. (3,9%), other crops (rice, melons and other) - 16,4 thsd. (1,4%) and feed crops - 310,0 thsd. hectares (26,6%).

About half of total sown areas of the country are used for grain crops (excluding grain and leguminous, rice and buckwheat). However, their area in 2012 decreased, mainly, due to reduction of wheat planting by 52,9 thsd. hectares (by 14%). Here at, the sown area of winter wheat reduced by 70 thsd. hectares (by 28,2%), and spring wheat, against, increased by 17,1 thsd. hectares (by 13,1%).

Barley was sown more than in 2011 (by 24,0 thsd. hectares or in 1,2 times) and corn for grain (by 20,8 thsd. hectares or in 1,3 times).

Sown areas of grain and leguminous, vegetables, melons and feed crops were increased due to reduce of planting of grain (excluding grain and leguminous, rice and buckwheat), oil plants, cotton, tobacco, sugar beet and potatoes. The area used for feed crops increased by 16,8 thsd. hectares or by 5,8%.

In last year, the area of unused arable land decreased by 8,0 thsd. hectares and made up 103,5 thsd. hectares in comparison with the previous year. The main reasons for non-use of arable land, as in the previous year, are hard dry (52,1 thsd. hectares), remoteness and stony (18,2 thsd. hectares), absence of irrigation and defect (disrepair) of irrigation system (13,3 thsd. hectares), salinization and swampy (5,8 thsd. hectares), lack of fuel and lubricants, seeds and technique (2,6 thsd. hectares), lack of funds (5,2 thsd. hectares).

In 2012, 2,6 thsd. hectares of grain and grains-leguminous crops planting (excluding rice and buckwheat), 151 thsd. hectares of oil crops, 35 hectares of cotton, 84 hectares of vegetables, 53 hectares of potatoes, 31 hectares of tobacco and 285 hectares of sugar beet fogged off and were written off due to bad weather and climatic conditions. The main reasons of fogging off these crops were dry, lack of water, cloudburst rainfall and hail on the territory of Djalal-Abad, Issyk-Kul, Osh and Chui oblasts.

**Table 10: Production of basic agricultural crops in 2012**

	Gross yield, thsd. tones	As a % to 2011
Grains (excluding grains and leguminous, rice and buckwheat) (net weight)	1333,8	89,8
Wheat (net weight)	540,5	67,6
Raw cotton (physical weight)	84,7	83,6
Tobacco (physical weight)	7,4	75,0
Sugar beet (manufactured)	102,0	64,2
Oil crops	58,6	103,4
Potatoes	1312,7	95,2
Vegetables	865,9	105,5
Melons	193,3	127,5
Fruits and berries	222,7	103,6

In 2012, totally by country, grain (excluding grain and leguminous, rice and buckwheat) in net weight was gathered by 151,2 thsd. tones or by 10,2% including wheat (by 32,4%) less than in the previous year.

**Table 11: Production of grain (excluding grain and leguminous, rice and buckwheat) by territory in 2012**  
(net weight)

	Gross yield, thsd. tones	As a % to 2011
<b>Kyrgyz Republic</b>	<b>1333,8</b>	<b>89,8</b>
Batken oblast	89,7	116,4
Djalal-Abad oblast	223,4	117,1
Issyk-Kul oblast	127,5	72,3
Naryn oblast	48,8	86,7
Osh oblast	281,8	111,8
Talas oblast	53,5	85,6
Chui oblast	503,1	75,7
Osh city	6,0	114,7

In 2012, on the average by country, yield of grain crops (excluding grain-leguminous, rice and buckwheat) made up 23,4 centner from a hectare (in net weight) against 25,8 centner from a hectare – in the previous year, including wheat - 16,8 centner from a hectare (in net weight) against 21,4 centner from a hectare, respectively.

In 2012, winter crops, totally by country, were sown more by 27,0 thsd. hectares (by 14,1%) than in the previous year.

**Table 12: Winter crops sowing by territory**

	Sown for harvest in 2013, total thsd. hectares	As a % to the previous year
<b>Kyrgyz Republic</b>	<b>220,2</b>	<b>114,1</b>
Batken oblast	8,8	99,0
Djalal-Abad oblast	19,1	B 2 p.
Issyk-Kul oblast	9,9	127,7
Osh oblast	41,1	B 1,7 p.
Talas oblast	9,5	95,7
Chui oblast	131,8	98,7
Osh city	0,02	-

In autumn of the previous year, 73,3 thsd. hectares were fall-plough, that was more by 8,3 thsd. hectares (by 12,7%) than in 2011.

## 2.2. Livestock Production

In 2012, the production of main livestock products has increased in comparison with the previous year.

**Table 13: Production of main livestock products in farms of all categories in January-December 2012**

	Produced-total, tones				As a % to the corresponding period of the previous year			
	2011		2012		2011		2012	
	December	January-December	December	January-December	December	January-December	December	January-December
Livestock and poultry for slaughter (in live weight)	33219	346540	32736	352526	101,1	101,0	98,5	101,7
Raw milk	83450	1358094	87175	1382426	100,2	99,9	104,5	101,8
Eggs, thsd. pieces	24700	392835	29667	416868	95,2	105,3	120,1	106,1
Wool (in physical weight)	-	11095	-	11333	-	102,2	-	102,1

Production of livestock products has grown in many regions of the country.

**Table 14: Production of main livestock products by territory in January-December 2012**

	Livestock and poultry for slaughter (in live weight)	Raw milk	Eggs, thsd. pieces	Wool (in physical weight)
	Tones			
<b>Kyrgyz Republic</b>	<b>352526</b>	<b>1382426</b>	<b>416868</b>	<b>11333</b>
Batken oblast	27605	93487	20600	657
Djalal-Abad oblast	52784	279027	47518	1872
Issyk-Kul oblast	43950	187218	72759	1844
Naryn oblast	48665	117206	6660	1857
Osh oblast	73943	275247	44863	2211
Talas oblast	23143	75649	20534	1370
Chui oblast	80659	347429	201245	1487
Bishkek city	383	523	1424	8
Osh city	1394	6640	1265	27

	<b>Livestock and poultry for slaughter (in live weight)</b>	<b>Raw milk</b>	<b>Eggs, thsd. pieces</b>	<b>Wool (in physical weight)</b>
	<i>As a % to the previous year</i>			
<b>Kyrgyz Republic</b>	<b>101,7</b>	<b>101,8</b>	<b>106,1</b>	<b>102,1</b>
Batken oblast	101,2	101,3	100,9	101,2
Djalal-Abad oblast	102,5	101,9	103,9	103,2
Issyk-Kul oblast	103,3	103,4	95,4	101,4
Naryn oblast	100,3	100,1	100,2	101,0
Osh oblast	101,2	102,0	102,7	101,0
Talas oblast	100,8	101,1	105,1	105,1
Chui oblast	102,3	101,6	113,2	102,8
Bishkek city	89,5	63,2	93,0	100,0
Osh city	101,3	101,9	102,3	100,0

Production of livestock and poultry for slaughter (in live weight) increased by 3,3% in farms of Issyk-Kul oblast, Djalal-Abad oblast - by 2,5%, Chui oblast – by 2,3%. Milk yield from one cow was high in farms of Issyk-Kul oblast (by 3,4%) and Osh oblast (by 20%). The average milk yield per cow made up 2023 kg.. Milk yield was high also in farms of Chui oblast (2883 kg), Talas oblast (2265 kg) and Issyk-Kul oblast (2083 kg). Production of eggs increased in farms of Chui oblast (by 13,2%) and Talas oblast (by 5,1%). 151 eggs were produced from one laying hen in farms of Chui oblast, 147 eggs – in Issyk-Kul oblast. From total volume of clipped wool, 95% was sheep wool. 2,9 kg of wool was clipped from one sheep in Talas and Chui oblasts, 2,6 kg – in Issyk-Kul and Osh oblasts. In 2012, 667,0 thsd. calves, that was higher by 2,4 thsd. heads than in 2011, 3354,4 thsd. lambs and goatlings (higher by 111,4 thsd. heads), 222,7 thsd. piggies (at the level of the previous year) were produced in farms of all categories. 79 calves, 92 lambs and goatlings, 68 colts and 1172 piggies were produced per 100 dams available at the beginning of a year.

### 2.3. Producer Price Index of Agricultural Production

In January-December 2012, producer prices for sold *agricultural products* have increased by 1,6% in comparison with the corresponding period of the previous year. Prices for livestock production increased by 12,3%, while prices for crop production decreased by 9,2%.

**Table 15: Producer price index of agricultural production**  
(as a %)

	<b>Total</b>		<b>including for production</b>			
	<b>to the previous period</b>	<b>to December of the previous year</b>	<b>Crop production</b>		<b>Livestock</b>	
			<b>to the previous period</b>	<b>to December of the previous year</b>	<b>to the previous period</b>	<b>to December of the previous year</b>
January	96,8	96,8	104,8	104,8	91,4	91,4
February	99,3	96,1	96,2	100,8	101,6	92,9
March	101,6	97,6	103,3	104,2	100,4	93,3
April	101,6	99,2	101,9	106,2	101,4	94,6
May	99,1	98,3	100,3	106,5	98,2	92,9
June	99,1	97,4	102,5	109,1	96,6	89,7
July	100,9	98,3	105,1	114,7	97,5	87,4
August	99,1	97,4	96,3	110,4	101,5	88,8
September	97,9	95,3	95,7	105,6	99,8	88,6
October	100,7	96,0	100,4	106,0	101,0	89,4
November	104,8	100,6	110,6	117,2	100,2	89,6
December	99,6	100,2	100,7	118,1	98,7	88,4

Prices for meat (by 10,5%), milk (by 16,7%), grain-leguminous (by 31,9%) increased highly in comparison with January-December 2011, and prices for potatoes and vegetables, against, decreased by 24,7 and 13,1% respectively.

**Table 16: Producer price index of selected types of agricultural production in January-December 2012**  
(as a %)

	Wheat	Rice	Grain- leguminous	Vegetables	Potatoes	Meat (live weight)	Raw milk	Eggs
<i>To the previous month</i>								
January	98,1	108,4	99,3	109,0	134,4	85,8	108,9	94,7
February	102,0	96,8	107,5	91,8	73,6	101,1	103,2	98,4
March	100,9	95,5	106,4	101,9	115,4	101,8	96,3	107,3
April	109,4	102,7	107,4	95,5	94,4	103,7	94,9	105,8
May	97,7	105,4	100,0	102,9	94,9	98,1	98,4	96,9
June	98,4	105,4	85,7	113,9	115,8	97,6	96,3	91,4
July	114,7	95,9	100,4	98,6	117,6	95,4	103,3	96,8
August	107,6	107,9	99,6	81,7	107,8	101,5	100,8	109,1
September	97,3	97,6	91,3	103,2	95,4	98,4	103,0	101,6
October	98,8	99,5	111,3	106,3	102,4	99,8	103,8	102,2
November	119,5	89,7	120,3	101,6	123,9	99,1	102,7	102,9
December	92,5	103,4	109,3	106,0	108,1	98,3	99,3	103,1
<i>To the corresponding period of the previous year</i>								
January	94,4	131,9	137,5	92,9	53,9	149,6	133,2	109,3
February	83,6	131,1	138,0	77,2	42,4	146,4	140,6	99,2
January-February	88,6	131,5	137,8	84,6	48,4	147,9	136,8	104,0
March	78,8	124,2	140,6	78,8	54,4	149,6	132,4	108,9
January-March	85,0	129,1	138,8	82,6	50,2	148,5	135,3	105,7
April	79,9	127,4	149,8	76,3	47,6	153,8	125,9	131,1
January-April	83,6	128,7	141,7	81,0	49,6	149,8	133,0	111,5
May	74,8	121,5	135,8	78,3	50,9	134,6	103,6	117,5
January-May	81,6	127,1	140,4	80,5	49,8	146,5	126,2	112,7
June	70,9	133,7	116,0	84,3	57,6	134,3	104,1	130,8
January-June	79,6	128,3	135,9	81,1	53,0	144,3	122,2	115,2
July	110,2	98,6	128,4	87,9	65,7	91,2	105,3	104,5
January-July	83,3	122,8	134,8	82,1	53,0	133,7	119,5	113,7
August	124,5	114,8	130,7	94,9	91,1	95,8	110,3	119,4
January-August	87,7	121,7	134,3	83,4	56,7	127,6	118,3	114,3
September	125,8	108,6	109,0	96,7	106,6	91,2	112,2	112,6
January-September	91,2	120,0	131,3	84,6	60,4	122,4	117,6	114,1
October	117,0	104,6	118,8	85,4	122,8	84,3	109,5	116,2
January-October	93,5	118,2	130,0	84,6	64,2	117,3	116,7	114,4
November	158,1	108,9	141,7	92,4	157,3	88,1	123,2	112,6
January-November	98,2	117,3	131,1	85,3	69,4	114,0	117,3	114,2
December	139,1	106,5	139,6	108,5	196,8	81,2	110,5	109,1
January-December	101,1	116,3	131,9	86,9	75,3	110,5	116,7	113,7

#### 2.4. Trade of Basic Foodstuffs

The share of foodstuff import in total import value for 2012 has made up 11,1%, export – 10,3%.

**Table 17: Import and export of basic foodstuffs**  
(thsd. tons)

	2011	2012
<b>Import</b>		
Bakery products expressed in grain	532,0	681,9
Sugar and confectioneries	91,3	89,8
Vegetable oil	37,1	40,1
The share of foodstuff in total import value, %	12,6	11,1
<b>Export</b>		
Milk and dairy products expressed in milk	126,7	120,1
Sugar and confectioneries	1,1	0,7
The share of foodstuff in total export value, %	8,7	10,3

## 2.5. Availability of Food Per Capita

The analysis of food balance shows that the availability of foodstuffs per capita on average per month remains stable (see Table 19 and Annex 3).

**Table 18: Level of consumption of basic foodstuffs**  
(per capita, kg per month)

	2011	2012*
Bakery products (expressed in grain)	15,8	15,7
of which wheat and wheat processed products (expressed in grain)	14,1	14,1
Potatoes	8,2	8,3
Vegetables and melons	12,5	12,6
Fruits and berries	2,4	2,4
Sugar and confectioneries	1,8	1,7
Meat and meat products	3,2	3,2
Milk and dairy products	17,8	17,9
Eggs, pieces	6,8	6,7
Vegetable fats	1,0	0,9

\*Data are preliminary

More detailed information is provided in the Annex (table 3 «Food balance»<sup>2</sup>).

<sup>2</sup> Food balances were compiled in accordance with «Methodology of calculation of basic foodstuff balance», approved by the Decree of the National Statistical Committee of the Kyrgyz Republic from September 15, 2010, №19.



### Section III. Access to Food

*Access: Foodstuff must be accessible both in terms of their physical availability and in terms of purchasing power.*

#### 3.1. Consumer Price Analysis

In 2012, growth of consumer prices made up 7,5% against 5,7% in 2011. Intensive growth of consumer prices was in III quarter of 2012 (by 3,1%).

In 2012, prices for *foodstuff and nonalcoholic beverages* increased by 4,5%. The highest growth of prices for one year was observed for fresh fruits (by 27,2%) fish (by 20%). The maximum growth of prices was for flour in September (by 13,2%), that affected change of prices for pastry. Prices for bread by the end of the year have increased by 18,4%, baked products – by 6,1%, pasta – by 5,9%. Prices for dairy produce, cheese and eggs increased by 8%, including cottage cheese – almost by %, milk – about 15%, kefir – by 9,5%.

At the same time, it was observed the decrease of prices for cereals – about 30%, (of which for buckwheat – almost by 36%, wheat - by 24%), animal fats - by 11,5%, granulated sugar - by 5,4%, meat – by 1,2% (including beef – by 4,4%, mutton – by 2,8%, but prices for pork increased by 20,5%).

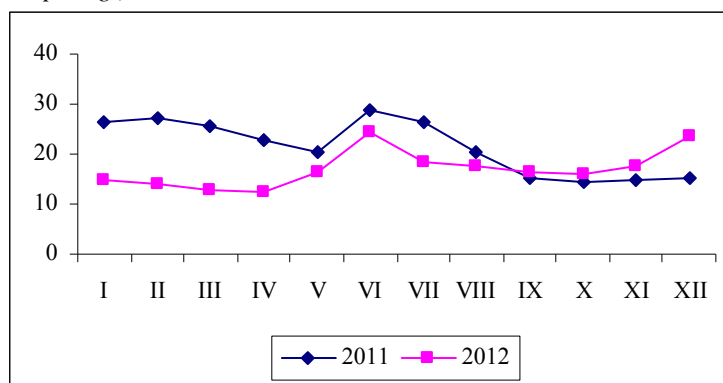
Prices for alcoholic beverages and tobacco totally increased by 10,2%.

Growth of prices was noted in all regions of the country, but the highest increase of prices was in Naryn oblast: for foodstuff and nonalcoholic beverages - by 8%, fish – by 22,7%, fruits – by 17,6%, bakery products and cereals – by 14,8%.

**Potatoes.** During the 4<sup>th</sup> quarter of 2012, average consumer prices for potatoes have increased from 15,82 soms per kilo in October to 23,60 soms in December, and the increase has made up 49,2%. In comparison with the 4<sup>th</sup> quarter of 2011, the average consumer price has increased by 29,5% and made up 19,06 soms per kilo.

**Graph 1: Monthly average consumer prices for potatoes**

(soms per kg.)

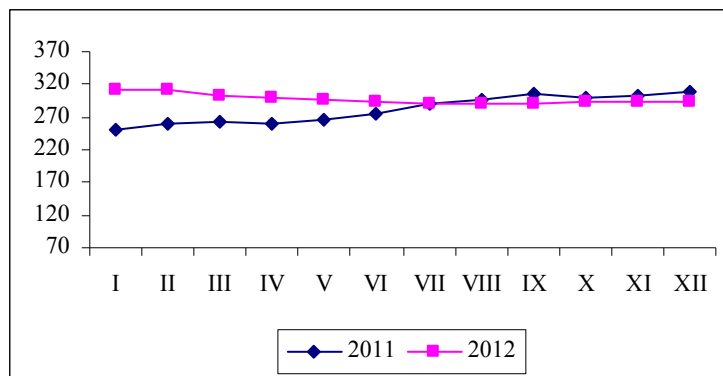


**Mutton.** In the 4<sup>th</sup> quarter of 2012, the average consumer price for mutton has decreased by 1% in comparison with the same period of 2011: from 291,31 soms per kilogram in the 4<sup>th</sup> quarter of 2011 to 288,43 soms per kilogram the 4<sup>th</sup> quarter of 2012.

**Beef.** On the average from October to December 2012, prices for beef have decreased insignificantly from 294,04 soms per kilogram in October to 292,59 soms in December and in comparison with the 4<sup>th</sup> quarter of 2011 prices have decreased by 3,3%.

**Graph 2: Monthly average consumer prices for beef**

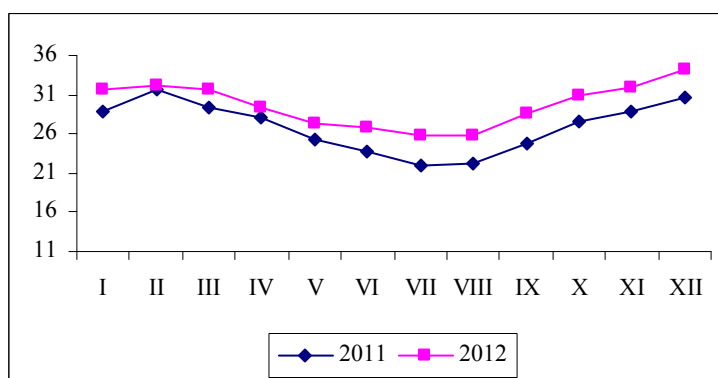
(soms per kg.)



**Fresh milk.** During the 4<sup>th</sup> quarter of 2012, the average price for milk has increased by 10,7 % and in comparison with the 4<sup>th</sup> quarter of 2011, average consumer price increased by 11,5 % and made up 32,41 soms per kilogram.

**Graph 3: Monthly average consumer prices for fresh milk**

(soms per kg.)



### 3.2. Money Income of Population

According to results of households sampling survey, nominal money income per capita in the 1<sup>st</sup> half of 2012 was valued at 3309,5 KG soms per month and in comparison with the previous year have increased by 16,1 %. The main sources of population money income were income from labour activity, its share in income structure made up 66,8%, incomes from social transfers – 15,8% and from sale of agricultural output produced in private subsidiary plot – 12,7%.

Monthly average per capita real money income of the population in the 1<sup>st</sup> half of 2012 was valued at 3278,7 KG soms and in comparison with the corresponding period of the previous year increased by 15%.

Size of average per capita disposable income was valued at 3119,5 KG soms. Average per capita disposable money incomes of population living in Bishkek city (by 606,5 soms), Chui oblast (by 435,2 soms) and in Osh oblast (by 32,5 soms) were higher than average republican level. Disposable incomes of population living in Batken oblast (3058,6 soms) and Naryn oblast (2980,2 soms) were close to average republican level. Incomes of population living in Issyk-Kul oblast (2889,6 soms), Talas oblast (2639,1 soms) and in Djalal-Abad oblast (2499,6 soms) were considerably less than average republican level.

The structure of average per capita disposable money incomes of households differs significantly depending on their place of residence. In urban areas, income from labour activity in total revenue has made up 77,2%, in rural areas – 56,5%. The second most important source of income in rural areas was the proceeds of the sale of products produced in private subsidiary plots of population and their share made up 21,2%.

Distribution of total money income by quintile groups of population is for the benefit of 20 % of population with the highest incomes, who have concentrated more than 49% of all money incomes.

**Table 19: Population money income by quintile groups**  
(as a percent)

	January-June	
	2011	2012
<b>Money income -total</b>	<b>100</b>	<b>100</b>
including 20 percent groups		
the first (with the lowest income)	6,4	4,8
the third	16,0	14,5
the fourth	23,0	22,2
the fifth (with the highest income)	43,5	49,2
Income ratio of 20% highest and 20% lowest income groups of population, in times	6,7	10,2

The monthly average nominal wages/salaries per employee in 2012 (excluding small enterprises) was valued at 10891 KG soms and in comparison with 2011 has increased by 16,5%, and its real size calculated including consumer price index has increased by 13,3%. Based on official exchange rate stated by the National Bank of the Kyrgyz Republic, monthly average wage/salary per employee in 2012 has made up 232 US dollars.

**Table 20: Monthly average nominal and real wages/salaries by territory<sup>1</sup> in 2012**

	Soms	As a % to the corresponding period of the previous year		Real salaries/wages as a % to the corresponding period of the previous year
		2011	2012	
<b>Kyrgyz Republic</b>	<b>10891</b>	<b>130,8</b>	<b>116,5</b>	<b>113,3</b>
Batken oblast	8556	147,7	121,5	110,5
Djalal-Abad oblast	10049	136,2	120,2	112,7
Issyk-Kul oblast	7952	140,6	116,7	116,4
Naryn oblast	10366	143,4	116,5	109,5
Osh oblast	7702	168,6	124,7	118,8
Talas oblast	8485	136,2	117,8	113,1
Chui oblast	9085	131,0	115,7	112,8
Bishkek city	14380	121,7	114,7	113,1
Osh city	9774	126,3	115,4	109,9

<sup>1</sup> Excluding small enterprises.

In 2012, wages and salaries in the budget line increased by 17,5%.

**Table 21: Monthly average nominal wages and salaries by territory<sup>1</sup> in 2012**

	Soms				As a % to the corresponding period of the previous year	
	Budget line		Non-budget line		Budget line	Non-budget line
	2011	2012	2011	2012		
<b>Kyrgyz Republic</b>	<b>7702</b>	<b>9048</b>	<b>12165</b>	<b>14115</b>	<b>117,5</b>	<b>116,0</b>
Batken oblast	6457	7844	9092	8830	121,5	115,0
Djalal-Abad oblast	6298	7523	12875	15838	119,5	123,0
Issyk-Kul oblast	6451	7576	7680	12892	117,4	119,3
Naryn oblast	8528	9893	10809	10954	116,0	120,5
Osh oblast	5934	7331	7926	10254	123,5	129,4
Talas oblast	6344	7592	10962	12513	119,7	114,1
Chui oblast	7073	8252	8898	10227	116,7	114,9
Bishkek city	10649	12216	14203	16329	114,7	115,0
Osh city	7258	8649	10752	12068	119,2	112,2

<sup>1</sup> Excluding small enterprises.

In 2012, growth of wages and salaries was observed in all types of economic activity in comparison with the corresponding period of the previous year, but the significant increase of wages and salaries of employees was in the field of mining (by 37,9%), health (by 28,4%), production and distribution of energy and electricity, gas and water (by 19,8%).

In 2012, wages and salaries of employees engaged in financial activity, transport and communication, mining, production and distribution of energy and electricity, gas and water was significantly higher than average republican level. Its lowest level was in agriculture, education, provision of communal, social and personal services.

The sum of total debt on payment of wages and salaries as of January 1, 2013 totally by country has increased by 1,0% in comparison with the same date of 2012, and against, has decreased by 7,4% in comparison with the same date of the previous month.

**Table 22: Total debt on payment of wages and salaries on the territory<sup>1</sup> as of January 1, 2013**

	Mln. Soms	As a % to the corresponding period of	
		the previous year	the previous month
<b>Kyrgyz Republic</b>	<b>288,7</b>	<b>101,0</b>	<b>92,6</b>
Batken oblast	33,3	91,0	83,2
Djalal-Abad oblast	35,7	95,2	82,9
Issyk-Kul oblast	33,2	69,2	86,5
Naryn oblast	21,1	127,7	86,4
Osh oblast (including Osh city)	17,0	56,0	59,7
Talas oblast	9,3	80,1	111,0
Chui oblast	95,6	148,8	128,7
Bishkek city	43,5	106,1	79,3

<sup>1</sup> Excluding small enterprises.

## Section IV. Additional materials

### 4.1. Food security indicators

*(according to the data of the Ministry of Agriculture and Reclamation of the Kyrgyz Republic)*

In accordance with the average physiological standards of nutrition, in 2012, estimate indicators of provision of internal food market of the country with basic foodstuff from the harvest of 2012 (including export and import volumes for January-October 2012 and excluding carry-over) have made up: bakery products – 139,3%, potatoes – 152,8%, milk – 112%, meat – 75%, vegetables – 146,3%, fruits and berries – 24%, eggs – 42,6%, vegetable oil - 98,8%, sugar – 63,7%,.

Provision of bakery products (59,1%), potatoes (152,7%), milk (112%), meat (56,9%), vegetables (146,1%), fruits and berries (21,6%), eggs (40,3%), vegetables oils (27,9%) and sugar (9,4%) were due to own production.

According to estimated data, the percent of internal market provision due to own production was low related to sugar, meat, vegetable oil, eggs, fruits and berries. The share of products import in the internal market made up for bakery products - 57,6%, meat – 24,2%, vegetable oil – 71,7%, sugar – 85,3%, fruits and berries – 15,4%.

The main volume of import of fruits and berries related to citreous that are not produced in the country. In view of internal market needs in poultry meat (legs), 24% of meat import related to poultry meat.

In 2012, the Government of the Kyrgyz Republic and the Ministry of Agriculture and Reclamation of the Kyrgyz Republic adopted the set of measures to provide domestic food market with basic foodstuff and food security of the Kyrgyz Republic.

In order to conduct spring field works successfully and implement objectives intended for production of agricultural output by rural commodity producers, within the project «Accessible credits/loans for farmers-2», cash loans in the amount of 304,4 mln. soms were allocated totally by the country for 2850 economic entities to develop crop production.

394,7 mln. soms were allocated for 3423 economic entities to develop livestock farming.

From allocated funds at the amount of 50,0 mln. soms, 30,0 mln. soms were used for purchasing wheat and barley seeds, 20,0 mln. soms – for lucerne and holy clover seeds to use for spring planting in 2012.

In accordance with the decree of the Government of the Kyrgyz Republic dated July 11, 2011 № 382, “Aiyl Bank” joint corporation leased 72 tractors “MT3-82.1”, 17 tractors “YTO-904” and more than 30 units of different agricultural machines.

The rest of 2965,4 m<sup>3</sup> of preferential diesel fuel, available in the Fund of state tangible reserves, was distributed for aiyl okrugs (village municipality) and selected peasant farms, the price in the south regions was 35,20 soms per liter, in the north – 33,0 soms per liter.

In 2012, gross agricultural output was produced in current prices at the amount of 167505,3 mln. soms totally by country due to effective measures taken timely. Growth rate made up 101,2% in 2011 including livestock production – 101,8%, crop production – 100,6%.

Anomalous whether and climate changes of the current year affected negatively on decrease of agricultural crops production volumes. So, wheat production volumes decreased by 259,3 thsd. tones in comparison with 2011.

In order to meet needs of population in bakery products the Government of the Kyrgyz Republic reached an agreement with the Government of Republic of Kazakhstan and Russian Federation to purchase grains of food wheat in bulk of 200,0 thsd. tons. This specified amount of wheat will be processed at domestic milling enterprises to take commodity inventory in the food market in the country in order to stabilize prices for socially important food products.

Food security issues were reviewed at the meeting of the Government of the Kyrgyz Republic in June 14, 2012, and at the meeting of Food Security Board in June 5 and August 3 of the current year.

Positive growth rate was in meat production. According to results of 2012, 352,5 thsd. tons of meat in live weight was produced by economic entities of all categories, that was higher by 5986 tons or by 1,7% than in the previous year. The increase of meat production was mainly due to increase of cattle by 39,7 thsd. heads, sheep and goats - by 250,4 thsd. heads, horses – by 10,5 thsd. heads and poultry by 65,4 thsd. heads.

1382,4 thsd. tons of milk has been produced, that is higher by 24,3 thsd. tons or by 1,8% than in the previous year.

416,8 mln. pieces of eggs has been produced, that is higher by 24,0 mln. pieces or 106,1% than in the previous year.

Total activities on food security include activities on timely implementation of veterinary works focused to prevent beginning and spreading of transmissible diseases of animals, production and realization of safety animal products.

In 2012, 49239,8 thsd. heads of livestock and poultry (or by 103,3%) was treated totally by country including: diagnostics of 7364,6 thsd. heads, preventive vaccination of 23341 thsd. heads, dehelminthization and other health care treatments of 18534,1 thsd. heads.

171 troubled places with accidents of contagious diseases were registered for the reference/reporting year. 4368 heads of animals were diseased, of which 228 heads died.

From 171 registered infection focal points: murrain - 37, madness - 103, sheep pox - 2, charbon/splenic fever (cattle) - 1, blackleg – 5, bradsot - 2, breeding disease -16, salmonellosis – 4, american bees foul brood - 1. Veterinary and sanitation activities on abolition of diseases were conducted by veterinaries on-the-spot according to instructions.

The Ministry has developed the Strategy of Agriculture Development in the Kyrgyz Republic up to 2020". The main purpose of this Strategy is to provide the population with adequately qualitative and full value food of own production. Adoption of the Strategy will contribute to the further sustainable development of agriculture of the country.

The Kyrgyz Republic has significant land and labor resources, and is able to meet potentially own needs of basic agricultural products and its processed products, and also to export significant volumes to world markets.

#### 4.2. On results of the count of livestock and poultry in the Kyrgyz Republic as of the end of 2012

In December 2012, one time enumeration of livestock and poultry was implemented on the territory of the Kyrgyz Republic in order to define their actual number.

Livestock and poultry were enumerated in state and collective farms, subsidiary farms of enterprises and organization, peasant farms, farms of individual entrepreneurs and private subsidiary plots of the population.

**Table 23: Livestock and poultry**

*(all categories of farms, as of the end of year, heads)*

	2011	2012	2012 to 2011	
			+, -	as a %
Cattle - total	1338583	1367466	28883	102,2
Sheep and goats	5288115	5423881	135766	102,6
Pigs	59202	55380	-3822	93,5
Horses	388971	398796	9825	102,5
Poultry - total	4815308	5076559	261251	105,4
Camels	309	311	2	100,7
Mules	71387	73222	1835	102,6
Rabbits	36546	32836	-3710	89,9
Bee families, piece	91162	89185	-1977	97,8

Enumeration of livestock and poultry in December 2012 certifies that in the country there is a tendency of increasing the number of main types of agricultural animals (excluding pigs).

**Table 24: Number of main types of livestock by territory***(all categories of farms, as of the end of 2012)*

	Cattle		Sheep and goats		Horses	
	Heads	As a % to total number of cattle	Heads	As a % to total number of sheep and goats	Heads	As a % to total number of horses
<b>Kyrgyz Republic</b>	<b>1367466</b>	<b>100</b>	<b>5423881</b>	<b>100</b>	<b>398796</b>	<b>100</b>
Batken oblast	122164	8,9	468714	8,6	6127	1,5
Djalal-Abad oblast	273136	20,0	1121282	20,7	54227	13,6
Issyk-Kul oblast	191974	14,0	796451	14,7	84423	21,2
Naryn oblast	136552	10,0	940291	17,3	94888	23,8
Osh oblast	314647	23,0	1002482	18,5	84035	21,1
Talas oblast	66291	4,8	498606	9,2	23879	6,0
Chui oblast	251824	18,4	574882	10,6	50410	12,6
Bishkek city	1065	0,1	3773	0,1	234	0,1
Osh city	9123	0,7	16413	0,3	467	0,1
Special enumeration	690	0,1	987	0,02	106	0,03

From total number of cattle, the biggest number of cattle are in farms of Osh oblast (23,0%), Djalal-Abad oblast (20,0%) and Chui oblast (18,4%), sheep and goats – in farms of Djalal-Abad oblast (20,7%), Osh oblast (18,5%), Naryn oblast (17,3%), Issyk-Kul oblast (14,7%), horses – in farms of Naryn oblast (23,8%), Issyk-Kul oblast (21,2%), Osh oblast (21,1%), Djalal-Abad oblast (13,6%).

As of the end of 2012, in comparison with 2011, the number of cattle in farms of Issyk-Kul oblast increased by 3,8%, Djalal-Abad oblast – by 2,5%, Naryn – by 2,3%, Batken and Osh oblasts – by 2,0%, Talas oblast – by 1,4%, Chui oblast – by 1,2%.

From total number of cattle, 2,3% are yaks. Their number increased for one year by 372 heads (or 1,2%) and made up 31537 heads.

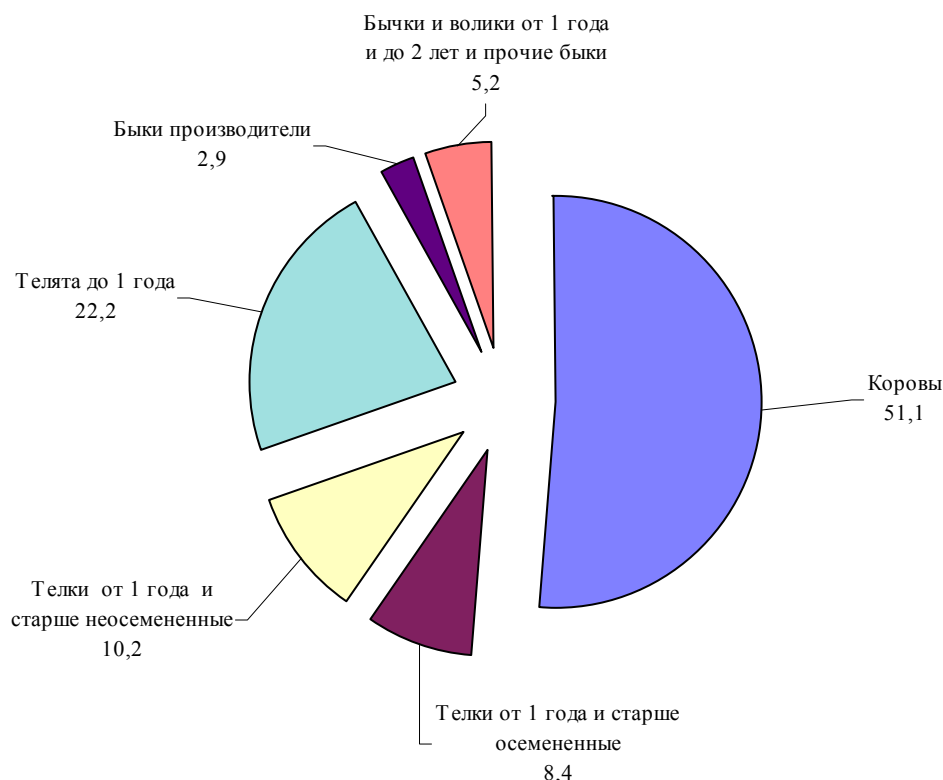
**Table 25: Number of yaks by territory***(all categories of farms, as of the end of 2012)*

	Heads	As a % to	
		the corresponding date of the previous year	total number of yaks
<b>Kyrgyz Republic</b>	<b>31537</b>	<b>101,2</b>	<b>100</b>
Batken oblast	1530	98,5	4,9
Djalal-Abad oblast	280	82,4	0,9
Issyk-Kul oblast	9448	110,8	29,9
Naryn oblast	13932	99,8	44,2
Osh oblast	5065	92,2	16,0
Talas oblast	291	79,7	0,9
Chui oblast	716	132,6	2,3
Special enumeration	275	71,4	0,9

In 2012, the number of yaks-cows increased by 1,8% and made up 16715 heads.

The biggest share from the total cattle numbers are cows (51,1%) and calves under 1 year (22,2%).

**Graph 4: Structure of cattle heads by sex and age groups**  
(all categories of farms, as of the end of the year, in % to total)



The number of sheep and goats in farms of Djalal-Abad oblast increased by 31,1 thsd. heads, Osh oblast - by 29,9 thsd., Issyk-Kul oblast – by 25,0 thsd., Naryn oblast - by 24,2 thsd., Chui oblast – by 15,6 thsd. and in Talas oblast – by 15,5 thsd. heads.

From total sheep and goats numbers, 17,2% (933,8 thsd. heads) are goats. The biggest numbers are in farms of Djalal-Abad oblast (22,8% from total goats numbers), Batken oblast (22,2%), Naryn oblast (21,6%) and Osh oblast (18,5%).

The horses numbers increased by 2,7 thsd. heads (by 5,8%) in farms of Chui oblast, Issyk-Kul oblast – by 3,3 thsd. heads (by 4,1%), Talas oblast - by 0,6 thsd. (by 2,7%).

Female number of cattle has increased over the 2012, but its share in the structure of herd remained at the level of 51,1%.

**Table 26: Female number of main types of livestock**

(all categories of farms, as of the end of the year, heads)

	2011	2012	2012 in % to 2011	Share in total number, %	
				2011	2012
Cows	684157	699339	102,2	51,1	51,1
Female sheep and goats and female lambs over 1 year	3634985	3744892	103,0	68,7	69,0
Main female pigs	19007	18143	95,5	32,1	32,8
Mares aged 3 years and over	189553	197778	104,3	48,7	49,6

The number of cows in farms of Issyk-Kul oblast increased by 3,4 thsd. heads (by 3,7%), Djalal-Abad oblast – by 4,2 thsd. (by 2,9%), Batken oblast – by 1,3 thsd. (by 2,1%), Osh – by 2,9 thsd. (by 1,8%), Chui oblast – by 1,9 thsd. (by 1,6%).

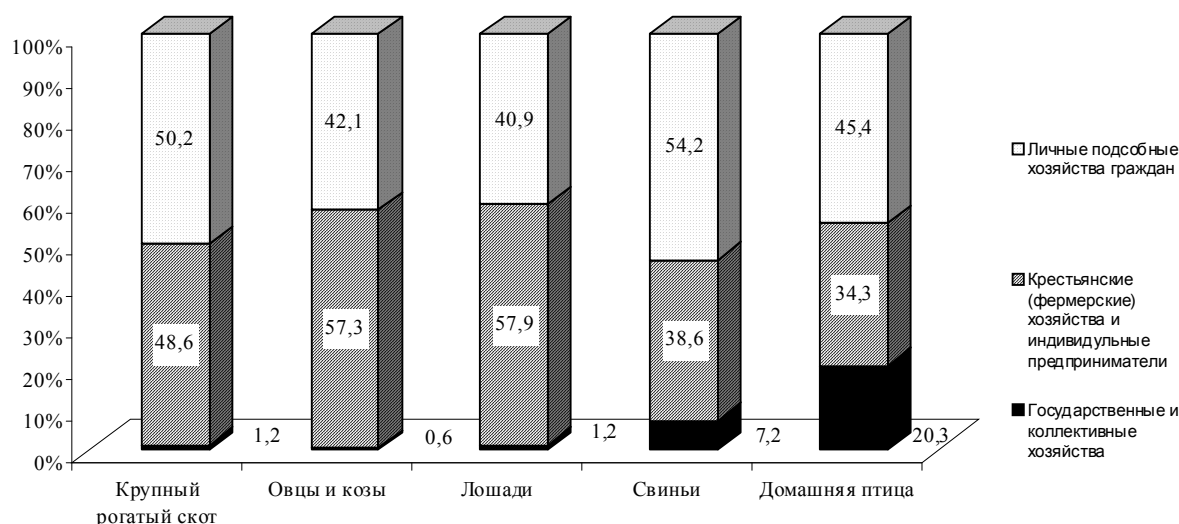


The share of female sheep and goats in total number of sheep and goats made up 69,0%. Their number increased by 109,9 thsd. heads (or 3,0%). The number of female sheep and goats in farms of Djalal-Abad oblast increased by 4,8%, in Naryn oblast – by 3,4%.

The number of mares aged 3 years and over increased by 4,3%, their share in total number of horses made up 49,6%. The number of mares in farms of Issyk-Kul oblast increased by 2,9 thsd. heads, in Chui oblast – by 1,6 thsd. heads.

The biggest share of livestock and poultry are in peasant farms and private subsidiary plots of citizens.

**Graph 5: Main types of livestock and poultry by farm categories**  
(as a % to total)



The number of main types of livestock has increased in peasant farms in comparison with the previous year.

**Table 27: Livestock and poultry by farm categories**  
(as of the end of the year, heads)

	State and collective farms		Peasant farms and private subsidiary plots of the population	
	2012	2012 in % to 2011	2012	2012 in % to 2011
Cattle	15872	92,0	1351594	102,3
Sheep and goats	33215	89,0	5390666	102,7
Pigs	3967	77,0	51413	95,1
Horses	4734	91,9	394062	102,7
Poultry	1028029	116,2	4048530	103,0

In addition, as of the end of 2012, there were 32775 rabbits, 73198 mules, 311 camels and 62800 bee families in peasant farms and private subsidiary plots of the population.

Data on availability of livestock and poultry numbers by country, oblasts, towns and cities, regions/rayons, aйл aimaks (*small villages*) are shown in annexes.

## Methodological explanations

**The unemployed** – people at the age of 16 years and over who during the period under review had no job (income-generating occupation); who were in search for a job i.e. applied to state employment service or used alternative ways of job finding as well as those who were ready to start working.

**Gross Domestic Product (GDP)** – a general indicator of economic activity of the country, which is calculated in current market prices (GDP nominal) and in comparable prices (GDP real).

**Consumer price index for goods and paid services to population (CPI)** – characterises the change in the general price level for goods and services over time. The index measures the correlation of the value of actually fixed set of goods and services during the given period to its value during the basic period.

**Monthly average nominal salary** is calculated by dividing actually accrued salary fund of the staff and part-time employees to the number used for the calculation of average salary and to the number of months in a reporting period.

**Average daily per capita calorie** characterizes energy value and calories in consumed food products per one household member as well as chemical composition in proteins and fats.

**Official unemployment level** – is the ratio of people officially registered as unemployed to the number of economically active population expressed in percent.

**Availability of food** refers to the physical quantities of food at the disposal of the population as a result of domestic food production or market. At the national level availability of food is defined as a combination: stocks, commercial import, food aid and own production. Following aspects also refer to availability: climatic conditions, the areas harvested, animal numbers and productivity, producer prices for food, food prices in neighboring countries, and the national policies which determine production, trade, distribution and pricing.

The availability of food per capita is calculated using food balance. A food balance shows for each basic foodstuff the total physical availability and consumption of that foodstuff over a given period of time, usually for 1 year. Total **physical availability** is the sum of opening stocks, production and import in that product in a given period of time. **Total use** is human consumption + animal feed + seeds + losses + exports. Drawn up over a succession of years, food balances usually reveal a trend in total availability, import, export, and the availability of food for human consumption and for fodder. Dividing the annual amount of food available for human consumption by the population gives a key indicator of availability: the average availability of food per capita per year. This measure of food availability is a national average, which does not take into account households' access (i.e. ability to produce, purchase or otherwise obtain) to food.

**Access to food** refers to the ability of household members to obtain adequate safety and appropriate foods to meet their needs for a healthy and active life. Access can be through production for own consumption, market purchases or donations/transfers. Access differs between households according to employment status, income, family size, location etc. Elements that affect the access also include social security, payment delays in salaries and wages, inflation, the cost of essential foodstuff and other goods and services. National policy, which affects employment, income and inflation, also affects significantly households' access to food.

**Use of food** refers to the selection, composition, preparation and allocation of food within the household. Utilization of food refers to the ability of the human body to take and use food within the body and convert food into energy. Food use covers knowledge of appropriate diets, and proper allocation of food within the family. The ability of the body to utilize food is affected by its state of health and access to clean drinking water, access to basic health services, food cooking and food storage. The ultimate measure of food security is the nutritional status of the population.

## List of Abbreviations

<b>GDP</b>	Gross Domestic Product/ Валовой внутренний продукт ( <b>ВВП</b> )
<b>WHO</b>	World Health Organization/ Всемирная организация здравоохранения ( <b>ВОЗ</b> )
<b>GMCL</b>	Guaranteed Minimum Consumption Level/Гарантированный минимальный уровень потребления ( <b>ГМУП</b> )
<b>UMB</b>	Unified (one-time) Monthly Benefit (payment)/Единые ежемесячные пособия ( <b>ЕЕП</b> )
<b>EC</b>	European Commission/Европейская Комиссия ( <b>ЕК</b> )
<b>CPI</b>	Consumer Price Index for goods and paid services to population/Индекс потребительских цен ( <b>ИПЦ</b> ) на товары и платные услуги населению
<b>EC FSP</b>	European Commission Food Security Program/Программа Продовольственной Безопасности Европейской Комиссии ( <b>ППБ ЕК</b> )
<b>FAO</b>	UN Food & Agriculture Organization/Продовольственная и Сельскохозяйственная Организация ООН ( <b>ФАО</b> )

## Annex

### Annex 1. Review of hydro-meteorological conditions on the territory of the Kyrgyz Republic in the 4<sup>th</sup> quarter of 2012

(Source: according to data of the State Agency on Hydrometeorology of the Ministry of Emergency of the Kyrgyz Republic)

#### *Agro meteorological conditions:*

**October.** Monthly average temperature of air in the most regions of Kyrgyzstan was above the normal by 1...1,5<sup>0</sup>, in piedmont and mountain regions of Chui, Djalal-Abad oblasts, in the zone of farming of Issyk-Kul oblast, Naryn oblast, in Kara-Suu and Nookat rayons was close to normal, in Alai rayon and Chon-Ashuu Pass was below the multiyear normal by 1...2<sup>0</sup>.

Rainfall in the most regions was below the normal by 18-78%. During the month, rainfall in Suzak, Jungal rayons was absent (0%), on the east of Chui Valley, in piedmont and mountain regions of Chui oblast, in Toktogul howe, in Tup and At-Bashy rayons, in Cholpon-Ata town and on the Chon-Ashuu Pass was close to normal by 82-119%.

**November.** Monthly average temperature of air in the most regions of Kyrgyzstan was below the normal by 1...3<sup>0</sup>, in Cholpon-Ata town, in Naryn and Ak-Sui rayons was close to normal, on the east of Alai Valley was above the multiyear normal by 1,5<sup>0</sup>.

Rainfall in the most regions was above the normal by 121-272%, on the Too-Ashuu Pass, in Suusamyr Valley, Talas Valley, in Toktogul howe, in Chychkan tract (range), in Tup, Jeti-Oguz, Jungal and Naryn rayons was close to normal by 82-113%, in Kara-Bura, Batken rayons, in Cholpon-Ata town, in Kara-Kujur Valley was below the normal by 23-77%.

**December.** Monthly average temperature of air in the most regions was below the normal by 1...3<sup>0</sup>, in Chui and Talas valleys were also below the normal by 4...6<sup>0</sup>, in the zone of farming of Naryn oblast was close to normal, on the east of Alai Valley and in Chatkal Valley was above the multiyear normal by 1...2<sup>0</sup>.

Rainfall in the most regions was above the normal by 123-339 %, in piedmont and mountain regions of Issyk-Kul, Chui and Djalal-Abad oblasts was close to normal by 82-115%, in the zone of farming of Naryn and Issyk-Kul oblasts was 3-77% of the multiyear normal.

#### *Hydrological conditions in December 2012:*

Water content of the most of rivers of the republic was within the norm. Increased outlet of rivers as Alamedin, Ala Archa, Uzun Akmat, Donguz Too, Tar, Kurshab, Kyzyl Suu, in Talas and Naryn riverheads was normal (128-212%). Decreased outlet of rivers as Chon Kemin, Talas (Ak Tash), Padysha Ata, Kara Kuldja and Kegart was normal (71-78%).

It was observed the following ice phenomena: submerged off-shore ice (submerged land-fast ice) and frazil ice – in Naryn and Padysha-Ata rivers; bottom ice and ice gorge – in rivers of Chui basin; ice gorge – in Djyrgalan river; freezing – in Talas (Ak Tash) river, freezing period (*since the third decade of December*) – in Bolshoyi and Malyi rivers. During the period of 16-20<sup>th</sup> of December, due to hard ice situation, it was observed bottom ice and gorge in Ala Archa river – Kashka Suu water mouth: the water level came up by 6-18 cm, water consumption made up 2,43m<sup>3</sup>/sec..

Water inflow into the following reservoirs was normal: Orto-Tokoi - 153%, Kirov – 84%. Water inflow in Toktogul reservoir is not calculated due to lack of actual data on outlet to Naryn river – Uch Terek range/transit (hydro post is located in affluent by emissions from Kamarata reservoir).

#### **Condition of Reservoirs as of December 31, 2012**

Reservoirs	Changes during a month, mln. m <sup>3</sup>	Volume of water in 2012		Volume of water in 2011	
		mln. m <sup>3</sup>	as a % of volume	mln. m <sup>3</sup>	as a % of volume
Toktogul	-1473	14997	77	17280	89
Orto-Tokoi	+83	273	58	313	67
Kirov	+120	257	47	282	51

**Таблица 2: Средние потребительские цены на продукты питания  
в разрезе регионов в IV квартале 2011-2012 гг.  
(сом/кг)**

**Table 2: Average consumer prices for food by regions in the IV<sup>th</sup> quarter of 2011-2012  
(soms / kg)**

Область /Oblast	IV квартал / IV quarter		2012		
	2011	2012	октябрь/ October	ноябрь/ November	декабрь/ December
<b>Картофель / Potatoes</b>					
Баткенская/ Batken	17,79	18,63	16,44	16,88	22,56
Джалал-Абадская / Djalal-Abad	15,48	22,25	17,25	21,50	28,00
Иссык-Кульская / Issyk-Kul	9,00	14,08	13,75	11,00	17,50
Нарынская / Naryn	11,64	17,94	13,88	14,96	25,00
Ошская / Osh	16,11	20,83	18,25	19,79	24,46
Таласская / Talas	12,00	17,85	14,04	16,50	23,00
Чуйская / Chui	13,91	18,45	15,30	17,75	22,30
г.Бишкек/ Bishkek city	14,70	18,84	15,38	17,55	23,57
<b>В среднем по республике / On the average by the Republic</b>	<b>14,72</b>	<b>19,06</b>	<b>15,82</b>	<b>17,77</b>	<b>23,60</b>
<b>Молоко свежее / Fresh milk</b>					
Баткенская/ Batken	28,75	33,54	32,50	33,13	35,00
Джалал-Абадская / Djalal-Abad	31,08	32,92	30,00	31,25	37,50
Иссык-Кульская / Issyk-Kul	23,19	25,00	25,00	25,00	25,00
Нарынская / Naryn	22,47	26,67	20,75	26,75	32,50
Ошская / Osh	25,69	29,58	27,08	28,75	32,92
Таласская / Talas	26,67	26,04	25,00	25,83	27,29
Чуйская / Chui	25,83	27,78	26,67	28,33	28,33
г.Бишкек/ Bishkek city	30,56	34,31	33,19	33,89	35,83
<b>В среднем по республике / On the average by the Republic</b>	<b>29,06</b>	<b>32,41</b>	<b>30,98</b>	<b>31,95</b>	<b>34,30</b>
<b>Мука 1 сорта / Flour, 1st grade</b>					
Баткенская/ Batken	28,33	30,82	31,13	31,00	30,33
Джалал-Абадская / Djalal-Abad	23,83	31,29	31,13	31,75	31,00
Иссык-Кульская / Issyk-Kul	24,69	30,83	30,83	30,83	30,83
Нарынская / Naryn	25,54	32,00	32,00	32,00	32,00
Ошская / Osh	29,56	33,75	34,75	33,50	33,00
Таласская / Talas	19,73	27,92	27,75	28,00	28,00
Чуйская / Chui	26,67	31,35	31,25	31,40	31,40
г.Бишкек/ Bishkek city	28,20	30,55	30,15	30,75	30,75
<b>В среднем по республике / On the average by the Republic</b>	<b>27,70</b>	<b>31,11</b>	<b>30,98</b>	<b>31,24</b>	<b>31,09</b>
<b>Рис среднезерный / Rice (middle sized)</b>					
Баткенская/ Batken	71,94	70,76	71,67	70,00	70,63
Джалал-Абадская / Djalal-Abad	61,01	62,63	68,75	58,50	60,63
Иссык-Кульская / Issyk-Kul	63,12	61,67	61,67	61,67	61,67
Нарынская / Naryn	58,00	63,00	63,00	63,00	63,00
Ошская / Osh	87,08	95,83	103,13	93,13	91,25
Таласская / Talas	58,18	55,72	55,50	55,50	56,17
Чуйская / Chui	62,05	60,03	59,70	59,70	60,70
г.Бишкек/ Bishkek city	61,40	61,40	61,20	61,20	61,80
<b>В среднем по республике / On the average by the Republic</b>	<b>65,48</b>	<b>66,31</b>	<b>67,61</b>	<b>65,48</b>	<b>65,85</b>

Таблица 2: (продолжение)

Table 2: (continued)

Область /Oblast	IV квартал / IV quarter		2012		
	2011	2012	октябрь/ October	ноябрь/ November	декабрь/ December
<b>Сахар-песок / Granulated sugar</b>					
Баткенская/ Batken	60,58	52,17	52,50	52,00	52,00
Джалал-Абадская / Djalal-Abad	56,50	50,00	50,00	50,00	50,00
Иссык-Кульская / Issyk-Kul	50,68	52,83	52,83	52,83	52,83
Нарынская / Naryn	51,63	49,60	49,60	49,60	49,60
Ошская / Osh	56,38	51,08	51,25	51,25	50,75
Таласская / Talas	51,30	51,71	52,57	51,29	51,29
Чуйская / Chui	49,92	46,37	46,45	46,25	46,40
г.Бишкек/ Bishkek city	51,64	47,39	47,23	47,23	47,73
<b>В среднем по республике / On the average by the Republic</b>	<b>52,81</b>	<b>48,51</b>	<b>48,46</b>	<b>48,41</b>	<b>48,66</b>
<b>Лук / Onions</b>					
Баткенская/ Batken	20,38	14,50	15,00	14,25	14,25
Джалал-Абадская / Djalal-Abad	16,19	16,61	16,50	16,50	16,83
Иссык-Кульская / Issyk-Kul	16,25	16,58	15,75	15,00	19,00
Нарынская / Naryn	14,92	16,92	17,75	16,00	17,00
Ошская / Osh	15,78	17,06	17,83	16,67	16,67
Таласская / Talas	18,75	15,42	15,00	15,00	16,25
Чуйская / Chui	15,39	14,63	15,63	13,05	15,23
г.Бишкек/ Bishkek city	18,63	17,62	16,69	15,33	20,84
<b>В среднем по республике / On the average by the Republic</b>	<b>17,72</b>	<b>17,04</b>	<b>16,63</b>	<b>15,37</b>	<b>19,13</b>
<b>Хлопковое масло / Cotton oil</b>					
Баткенская/ Batken	100,83	83,00	85,00	83,00	81,00
Джалал-Абадская / Djalal-Abad	106,76	105,04	105,04	105,04	105,04
Иссык-Кульская / Issyk-Kul	111,30	111,30	111,30	111,30	111,30
Нарынская / Naryn	104,63	-	-	-	-
Ошская / Osh	117,16	104,21	105,34	103,64	103,64
Таласская / Talas	97,83	93,26	93,26	93,26	93,26
Чуйская / Chui	103,45	103,45	103,45	103,45	103,45
г.Бишкек/ Bishkek city	110,18	106,62	106,76	106,55	106,55
<b>В среднем по республике / On the average by the Republic</b>	<b>109,98</b>	<b>105,12</b>	<b>105,43</b>	<b>105,00</b>	<b>104,93</b>
<b>Баранина / Mutton</b>					
Баткенская/ Batken	300,00	300,00	300,00	300,00	300,00
Джалал-Абадская / Djalal-Abad	299,52	292,08	296,25	290,00	290,00
Иссык-Кульская / Issyk-Kul	256,46	270,17	274,38	269,58	266,56
Нарынская / Naryn	269,17	263,25	269,50	259,50	260,75
Ошская / Osh	300,00	294,58	302,50	291,25	290,00
Таласская / Talas	279,58	267,33	274,00	268,00	260,00
Чуйская / Chui	251,88	246,88	248,75	246,25	245,63
г.Бишкек/ Bishkek city	295,41	293,50	303,75	291,04	285,69
<b>В среднем по республике / On the average by the Republic</b>	<b>291,31</b>	<b>288,43</b>	<b>296,53</b>	<b>286,23</b>	<b>282,54</b>

Таблица 2: (продолжение)

Table 2: (continued)

Область /Oblast	IV квартал / IV quarter		2012		
	2011	2012	октябрь/ October	ноябрь/ November	декабрь/ December
<b>Говядина / Beef</b>					
Баткенская/ Batken	260,00	280,00	280,00	280,00	280,00
Джалал-Абадская / Djalal-Abad	288,63	280,00	280,00	280,00	280,00
Иссык-Кульская / Issyk-Kul	285,94	276,35	279,38	275,63	274,06
Нарынская / Naryn	300,00	292,92	291,67	290,83	296,25
Ошская / Osh	280,00	280,00	280,00	280,00	280,00
Таласская / Talas	299,33	279,50	281,50	281,00	276,00
Чуйская / Chui	330,62	275,00	276,00	274,00	275,00
г.Бишкек/ Bishkek city	311,44	303,06	303,33	304,35	301,51
<b>В среднем по республике / On the average by the Republic</b>	<b>303,60</b>	<b>293,64</b>	<b>294,04</b>	<b>294,30</b>	<b>292,59</b>
<b>Конина / Horsemeat</b>					
Баткенская/ Batken	-	-	-	-	-
Джалал-Абадская / Djalal-Abad	295,00	284,17	280,00	282,50	290,00
Иссык-Кульская / Issyk-Kul	282,08	265,75	0,00	262,50	269,00
Нарынская / Naryn	300,00	300,00	0,00	300,00	300,00
Ошская / Osh	-	-	-	-	-
Таласская / Talas	358,33	330,00	330,00	330,00	330,00
Чуйская / Chui	321,67	331,25	335,00	335,00	323,75
г.Бишкек/ Bishkek city	352,50	335,42	343,75	332,50	330,00
<b>В среднем по республике / On the average by the Republic</b>	<b>340,50</b>	<b>325,95</b>	<b>336,71</b>	<b>323,82</b>	<b>321,97</b>
<b>Свинина / Pork</b>					
Баткенская/ Batken	-	-	-	-	-
Джалал-Абадская / Djalal-Abad	-	-	-	-	-
Иссык-Кульская / Issyk-Kul	218,33	244,17	240,00	245,00	247,50
Нарынская / Naryn	-	-	-	-	-
Ошская / Osh	236,67	285,00	285,00	285,00	285,00
Таласская / Talas	200,00	207,78	200,00	210,00	213,33
Чуйская / Chui	216,00	250,00	250,00	250,00	250,00
г.Бишкек/ Bishkek city	232,50	292,71	288,13	295,00	295,00
<b>В среднем по республике / On the average by the Republic</b>	<b>230,77</b>	<b>284,10</b>	<b>280,59</b>	<b>285,76</b>	<b>285,94</b>
<b>Куры / Chicken</b>					
Баткенская/ Batken	200,00	205,00	205,00	205,00	205,00
Джалал-Абадская / Djalal-Abad	327,50	409,17	400,00	405,00	422,50
Иссык-Кульская / Issyk-Kul	226,67	242,78	233,33	236,67	258,33
Нарынская / Naryn	163,06	181,94	185,00	185,83	175,00
Ошская / Osh	236,25	289,72	286,67	290,00	292,50
Таласская / Talas	255,83	230,76	227,60	230,00	234,69
Чуйская / Chui	165,75	259,67	256,00	259,00	264,00
г.Бишкек/ Bishkek city	287,81	284,03	285,42	283,33	283,33
<b>В среднем по республике / On the average by the Republic</b>	<b>267,23</b>	<b>285,14</b>	<b>284,18</b>	<b>284,15</b>	<b>287,08</b>
<b>Яйца / Eggs (10 pieces)</b>					
Баткенская/ Batken	93,75	85,00	85,00	85,00	85,00
Джалал-Абадская / Djalal-Abad	72,20	78,69	75,36	78,21	82,50
Иссык-Кульская / Issyk-Kul	78,58	75,17	67,00	78,00	80,50
Нарынская / Naryn	75,00	83,38	75,00	85,00	90,13
Ошская / Osh	67,08	66,11	64,17	66,67	67,50
Таласская / Talas	78,33	85,49	80,21	86,25	90,00
Чуйская / Chui	71,00	75,25	69,50	73,75	82,50
г.Бишкек/ Bishkek city	67,01	68,01	65,80	68,03	70,20
<b>В среднем по республике / On the average by the Republic</b>	<b>69,27</b>	<b>70,44</b>	<b>67,60</b>	<b>70,54</b>	<b>73,18</b>

Продовольственный баланс  
по базовым продуктам питания

Таблица 3.

Table 3. Food balance  
by basic foodstuffs

Базовые продукты питания / Basic foodstuffs	Хлебопродукты/ Bread and bread products		Пшеница и продукты ее переработки/Wheat and wheat processed products		Картофель / Potatoes		Овощи и бахчевые / Vegetables and melons		Фрукты и ягоды / Fruits and berries	
	в пересчете на зерно, тыс. тонн /expressed in grain, thsd. tons		в пересчете на зерно, тыс. тонн /expressed in grain, thsd. tons		свежий, тыс. тонн / fresh, thsd. tons		свежий, тыс. тонн / fresh, thsd. tons		свежий, тыс. тонн / fresh, thsd. tons	
	2011	2012 <sup>1</sup>	2011	2012 <sup>1</sup>	2011	2012 <sup>1</sup>	2011	2012 <sup>1</sup>	2011	2012 <sup>1</sup>
1. Запасы на начало года / Opening stocks	1453,8	1295,6	827,2	844,7	712,3	733,4	236,8	242,3	9,4	20,6
2. Произведено продовольствия в стране (+) / Food production in the country	1580,7	1438,3	799,8	540,5	1379,2	1312,7	972,4	1059,2	215,1	222,7
3. Импортировано прод. товаров (+) / Food imports	532,0	681,9	505,5	619,4	0,7	0,2	10,2	6,4	47,2	41,6
<b>Поступление (1-3) (+) Availability</b>	3566,5	3415,8	2132,5	2004,6	2092,2	2046,3	1219,4	1307,9	271,7	284,9
4. Расходы на семена (-) / Expenses for seeds	138,1	142,5	91,8	88,8	318,6	285,5	0,0	0,0	-	-
5. На корм скоту (-) / Fodder	976,2	925,0	271,7	279,3	196,4	205,9	57,6	84,8	6,5	5,0
6. Потери (-) / Losses	61,8	59,2	19,2	18,0	62,7	61,3	15,0	16,1	6,2	6,5
7. Экспортировано прод. товаров (-) /Food exports	95,5 <sup>2</sup>	96,6 <sup>2</sup>	16,8 <sup>2</sup>	16,3 <sup>2</sup>	263,3 <sup>2</sup>	235 <sup>2</sup>	115,8 <sup>2</sup>	117 <sup>2</sup>	87 <sup>2</sup>	94,4 <sup>2</sup>
8. Наличие для потребления населением (-) / Availability for consumption by the population	999,3	1009,6	888,3	903,3	517,8	530,5	788,7	810,3	151,4	156,3
<b>Использование Consumption</b>	2270,9	2232,9	1287,8	1305,7	1358,8	1318,2	977,1	1028,2	251,1	262,2
10 Запасы на конец периода / Closing stocks	1295,6	1182,9	844,7	698,9	733,4	728,1	242,3	279,7	20,6	22,7

<sup>1</sup> Предварительные данные/Preliminary data

<sup>2</sup> С учетом неучтенного экспорта/Including unaccounted export



Таблица 3.(продолжение)

Table 3. (continued)

Базовые продукты питания / Basic foodstuffs	Мясо и мясопродукты / Meat and meat products		Молоко и молочные продукты / Milk and dairy products		Яйца / Eggs		Жиры растительные / Vegetable oil		Сахар и кондитерские изделия / Sugar and confectionery	
	в пересчете на убойный вес, тыс.тонн /expressed in slaughter weight, thsd. tons		в пересчете на молоко, тыс. тонн / expressed in milk, thsd. tons		миллионов штук / million pieces		тыс. тонн / thsd. tons		в пересчете на сахар, тыс. тонн/expressed in sugar, thsd. tons	
	2011	2012 <sup>1</sup>	2011	2012 <sup>1</sup>	2011	2012 <sup>1</sup>	2011	2012 <sup>1</sup>	2011	2012 <sup>1</sup>
1. Запасы на начало года / Opening stocks	4,6	4,8	38,6	39,5	25,4	36,3	36,0	26,4	15,9	10,4
2. Произведено продовольствия в стране (+) / Food production in the country	190,4	193,7	1358,1	1382,4	392,8	387,2	15,6	0,6	17,0	13,3
3. Импортировано прод. товаров (+) / Food imports	85,0	82,6	24,1	22,3	58,7	41,4	37,1	40,1	91,3	89,8
<b>Поступление (1-3) (+)</b>	280,0	281,1	1420,8	1444,2	476,9	464,9	88,7	67,1	124,2	113,5
4. Расходы на семена (-) / Expenses for seeds	-	-	-	-	7,3	8,5	-	-	-	-
5. На корм скоту (-) / Fodder	0,0	0,0	132,4	113,4	1,2	1,4	-	-	-	-
6. Потери (-) / Losses	0,3	0,3	1,7	1,7	0,0	0,0	0,0	0,0	0,1	0,1
7. Экспортировано прод. товаров (-) / Food exports	71,3 <sup>2</sup>	71,6 <sup>2</sup>	126,7 <sup>2</sup>	120,1 <sup>2</sup>	0,0	0,2	0,0	0,0	1,1	0,7
8. Наличие для потребления населением (-) / Availablity for consumption by the population	203,6	204,4	1120,5	1149,9	432,1	432,6	62,3	57,8	112,6	107,1
<b>Использование Consumption</b>	275,2	276,3	1381,3	1385,1	440,6	442,7	62,3	57,8	113,8	107,9
10 Запасы на конец периода / Closing stocks	4,8	4,8	39,5	59,1	36,3	22,2	26,4	9,3	10,4	5,6

<sup>1</sup> Предварительные данные/Preliminary data<sup>2</sup> С учетом неучтенного экспорта/Including unaccounted export

**Таблица 4: Баланс питания в виде энергетической ценности по результатам обследований  
ежедневного потребления и оценки ежедневных потребностей**  
(все население по демографическим группам и регионам)

**Table 4: Food Balance expressed in nutritional values and compared to calculated daily needs based on surveys of daily intake  
and on calculated daily needs based on recurrent nutritional surveillance**  
(total population by age/demographic groups and by region)

Область/Oblast	Население, человек		Ккал в день на душу населения		Белки в день на душу населения, грамм		Жиры в день на душу населения, грамм		
	Number, people		C/Calories C/d/p		Proteins g/d/p		Fats g/d/p		
	I полугодие / I half year		I полугодие / I half year		I полугодие / I half year		I полугодие / I half year		
	2011	2012	2011	2012	2011	2012	2011	2012	
<b>Все население</b>	<b>5 477 620</b>	<b>5 551 888</b>							<b>Total population</b>
Баткенская область	441 101	448 849	2 299	2 170	56,5	52,9	68,8	68,6	Batken
Джалал-Абадская область	1 036 644	1 054 226	2 295	1 758	61,0	47,9	57,9	39,8	Djalal-Abad
Иссык-Кульская область	444 520	448 003	2 290	2 353	59,9	62,6	62,4	65,6	Issyk-Kul
Нарынская область	262 137	264 947	2 047	2 090	57,3	61,3	48,8	49,5	Naryn
Ошская область	1 386 734	1 403 598	2 177	2 125	56,4	55,6	58,2	57,7	Osh
Таласская область	231 819	235 327	2 417	2 108	64,0	58,1	58,0	53,8	Talas
Чуйская область	814 870	822 581	2 415	2 629	64,3	73,1	68,5	73,7	Chui
г.Бишкек	859 795	874 357	2 270	2 058	62,9	57,0	64,2	58,9	Bishkek city
Суточное потребление			2 272	2 139	60,1	57,7	61,3	57,8	Daily intake
Суточные потребности			2 101	2 101	73,0	73,0	71,0	71,0	Daily needs
Баланс: (+) или (-)			171	38	-13	-15	-10	-13	Balance: (+) or (-)

**Таблица 4: (продолжение)**  
**Table 4: (continued)**

Область/Oblast	Население, человек		Ккал в день на душу населения		Белки в день на душу населения, грамм		Жиры в день на душу населения, грамм		
	Number, people		C/Calories C/d/p		Proteins g/d/p		Fats g/d/p		
	I полугодие / I half year		I полугодие / I half year		I полугодие / I half year		I полугодие / I half year		
	2011	2012	2011	2012	2011	2012	2011	2012	
<b>Население пенсионного возраста</b>	<b>598 542</b>	<b>619 569</b>							<b>Pensioners</b>
Баткенская область	44 625	43 939	2 565	2 387	64,5	59,7	79,7	77,7	Batken
Джалал-Абадская область	108 512	106 663	2 486	1 900	66,5	52,8	65,6	43,6	Djalal-Abad
Иссык-Кульская область	52 338	58 893	2 691	2 635	70,3	70,3	78,2	76,0	Issyk-Kul
Нарынская область	28 637	27 381	2 172	2 234	65,0	65,8	55,9	56,0	Naryn
Ошская область	123 271	128 611	2 461	2 422	64,5	64,6	69,1	67,7	Osh
Таласская область	22 356	23 472	2 716	2 390	72,8	67,4	69,0	63,4	Talas
Чуйская область	111 512	118 760	2 929	3 198	80,5	92,6	91,0	96,4	Chui
г.Бишкек	107 291	111 850	2 737	2 517	78,7	72,0	83,2	78,1	Bishkek city
Суточное потребление			2 626	2 506	71,2	69,6	76,0	71,7	Daily intake
Суточные потребности			2 100	2 100	71,0	71,0	72,0	72,0	Daily needs
Баланс: (+) или (-)			526	406	0	-1	4	0	Balance: (+) or (-)

**Таблица 4: (продолжение)**  
**Table 4: (continued)**

Область/Oblast	Население, человек		Ккал в день на душу населения		Белки в день на душу населения, грамм		Жиры в день на душу населения, грамм		
	Number, people		C/Calories C/d/p		Proteins g/d/p		Fats g/d/p		
	I полугодие / I half year		I полугодие / I half year		I полугодие / I half year		I полугодие / I half year		
	2011	2012	2011	2012	2011	2012	2011	2012	
<b>Население трудоспособного возраста</b>	<b>2 816 171</b>	<b>2 844 616</b>							<b>Working age population</b>
Баткенская область	218 470	222 151	2 578	2 426	63,2	59,5	77,0	76,2	Batken
Джалал-Абадская область	531 247	551 308	2 503	1 899	66,4	51,5	63,2	43,1	Djalal-Abad
Иссык-Кульская область	229 192	223 100	2 527	2 596	66,2	69,6	68,6	72,2	Issyk-Kul
Нарынская область	119 699	122 333	2 313	2 366	64,7	68,7	55,4	56,1	Naryn
Ошская область	666 388	673 018	2 378	2 330	62,0	61,1	63,4	63,0	Osh
Таласская область	112 751	114 442	2 733	2 361	72,3	65,0	65,6	60,3	Talas
Чуйская область	449 324	443 290	2 569	2 804	68,1	77,6	72,2	77,8	Chui
г.Бишкек	489 100	494 973	2 430	2 199	67,0	60,8	68,5	62,4	Bishkek city
Суточное потребление			2 480	2 329	65,7	62,8	66,9	62,7	Daily intake
Суточные потребности			2 212	2 212	76,0	76,0	74,0	74,0	Daily needs
Баланс: (+) или (-)			268	117	-10	-13	-7	-11	Balance: (+) or (-)

**Таблица 4: (продолжение)**  
**Table 4: (continued)**

Область/Oblast	Население, человек		Ккал в день на душу населения		Белки в день на душу населения, грамм		Жиры в день на душу населения, грамм		
	Number, people		C/Calories C/d/p		Proteins g/d/p		Fats g/d/p		
	I полугодие / I half year		I полугодие / I half year		I полугодие / I half year		I полугодие / I half year		
	2011	2012	2011	2012	2011	2012	2011	2012	
<b>Дети 1-17</b>	<b>1 961 485</b>	<b>1 994 379</b>							<b>Children aged 1-17 years</b>
Баткенская область	161 752	170 663	2 078	1 935	50,9	46,4	61,7	61,3	Batken
Джалал-Абадская область	381 934	375 276	2 043	1 610	54,1	43,9	50,6	36,1	Djalal-Abad
Иссык-Кульская область	157 374	158 908	1 895	2 013	49,4	52,8	50,4	55,5	Issyk-Kul
Нарынская область	107 589	107 351	1 835	1 892	50,4	56,2	42,3	43,9	Naryn
Ошская область	564 655	574 994	2 003	1 918	51,3	49,8	53,0	51,9	Osh
Таласская область	94 248	93 086	2 033	1 823	53,7	50,1	47,8	45,8	Talas
Чуйская область	245 895	256 301	1 981	2 104	52,1	57,7	53,8	57,3	Chui
г.Бишкек	248 038	257 798	1 894	1 667	51,9	45,2	51,3	45,9	Bishkek city
Суточное потребление			1 984	1 855	51,9	49,4	52,1	49,2	Daily intake
Суточные потребности			1 920	1 920	69,0	69,0	66,0	66,0	Daily needs
Баланс: (+) или (-)			64	-65	-17	-20	-14	-17	Balance: (+) or (-)

Таблица 4: (продолжение)  
Table 4: (continued)

Область/Oblast	Население, человек		Ккал в день на душу населения		Белки в день на душу населения, грамм		Жиры в день на душу населения, грамм		
	Number, people		C/Calories C/d/p		Proteins g/d/p		Fats g/d/p		
	I полугодие / I half year		I полугодие / I half year		I полугодие / I half year		I полугодие / I half year		
	2011	2012	2011	2012	2011	2012	2011	2012	
<b>Дети 1-3 лет</b>	<b>305 943</b>	<b>337 268</b>							<b>Children aged 1-3 years</b>
Баткенская область	27 516	38 601	1 488	1 376	37,1	33,8	44,7	44,3	Batken
Джалал-Абадская область	56 419	55 792	1 241	1 053	32,4	28,8	30,6	24,2	Djalal-Abad
Иссык-Кульская область	29 827	29 545	1 272	1 324	34,0	34,9	32,7	33,6	Issyk-Kul
Нарынская область	19 419	20 544	1 234	1 322	34,7	38,8	29,7	30,6	Naryn
Ошская область	84 643	103 063	1 359	1 283	35,3	33,8	35,0	34,1	Osh
Таласская область	17 345	15 465	1 366	1 213	36,2	33,7	32,8	31,1	Talas
Чуйская область	32 087	29 078	1 303	1 451	35,1	41,1	34,9	38,0	Chui
г.Бишкек	38 687	45 180	1 303	1 174	36,3	32,2	35,2	32,5	Bishkek city
Суточное потребление			1 320	1 258	34,9	33,8	34,4	33,4	Daily intake
Суточные потребности			1 661	1 661	62,0	62,0	59,0	59,0	Daily needs
Баланс: (+) или (-)			-341	-403	-27	-28	-25	-26	Balance: (+) or (-)

Таблица 4: (продолжение)  
Table 4: (continued)

Область/Oblast	Население, человек		Ккал в день на душу населения		Белки в день на душу населения, грамм		Жиры в день на душу населения, грамм		
	Number, people		C/Calories C/d/p		Proteins g/d/p		Fats g/d/p		
	I полугодие / I half year		I полугодие / I half year		I полугодие / I half year		I полугодие / I half year		
	2011	2012	2011	2012	2011	2012	2011	2012	
Дети 4-6 лет	303 237	325 006							Children aged 4-6 years
Баткенская область	26 562	24 607	1 789	1 672	43,9	41,1	53,6	53,4	Batken
Джалал-Абадская область	53 793	56 778	1 766	1 346	47,0	36,6	44,9	29,2	Djalal-Abad
Иссык-Кульская область	25 611	30 105	1 634	1 648	42,3	43,0	43,2	43,3	Issyk-Kul
Нарынская область	17 712	18 859	1 552	1 670	40,9	48,9	34,3	38,0	Naryn
Ошская область	68 714	75 649	1 693	1 660	44,0	43,0	42,9	43,1	Osh
Таласская область	16 477	15 179	1 700	1 602	45,2	43,9	40,2	41,5	Talas
Чуйская область	49 471	58 696	1 641	1 706	43,1	46,4	44,7	46,5	Chui
г.Бишкек	44 898	45 133	1 664	1 507	45,3	41,2	46,2	40,2	Bishkek city
Суточное потребление			1 689	1 590	44,3	42,5	44,4	41,3	Daily intake
Суточные потребности			1 661	1 661	62,0	62,0	59,0	59,0	Daily needs
Баланс: (+) или (-)			28	-71	-18	-20	-15	-18	Balance: (+) or (-)

Таблица 4: (продолжение)  
Table 4: (continued)

Область/Oblast	Население, человек		Ккал в день на душу населения		Белки в день на душу населения, грамм		Жиры в день на душу населения, грамм		
	Number, people		C/Calories C/d/p		Proteins g/d/p		Fats g/d/p		
	I полугодие / I half year		I полугодие / I half year		I полугодие / I half year		I полугодие / I half year		
	2011	2012	2011	2012	2011	2012	2011	2012	
<b>Дети 7-13 лет</b>	<b>797 600</b>	<b>803 689</b>							<b>Children aged 7-13 years</b>
Баткенская область	66 370	62 912	2 163	2 059	52,9	49,1	63,5	65,4	Batken
Джалал-Абадская область	157 274	158 975	2 152	1 740	56,5	47,4	52,9	39,3	Djalal-Abad
Иссык-Кульская область	61 141	55 320	2 053	2 184	53,3	56,7	54,8	62,4	Issyk-Kul
Нарынская область	44 005	41 140	1 972	2 020	53,9	59,9	45,3	47,1	Naryn
Ошская область	235 786	238 931	2 064	2 043	52,9	53,4	54,5	55,0	Osh
Таласская область	35 962	40 217	2 212	1 933	58,7	53,2	51,8	47,5	Talas
Чуйская область	96 258	99 864	2 179	2 291	58,1	63,3	58,2	62,6	Chui
г.Бишкек	100 804	106 329	1 974	1 742	53,7	46,8	54,0	48,7	Bishkek city
Суточное потребление			2 093	1 978	54,7	52,8	54,7	52,5	Daily intake
Суточные потребности			2 031	2 031	73,0	73,0	70,0	70,0	Daily needs
Баланс: (+) или (-)			62	-53	-18	-20	-15	-17	Balance: (+) or (-)



Таблица 4: (продолжение)  
Table 4: (continued)

Область/Oblast	Население, человек		Ккал в день на душу населения		Белки в день на душу населения, грамм		Жиры в день на душу населения, грамм		
	Number, people		C/Calories C/d/p		Proteins g/d/p		Fats g/d/p		
	I полугодие / I half year		I полугодие / I half year		I полугодие / I half year		I полугодие / I half year		
	2011	2012	2011	2012	2011	2012	2011	2012	
Дети 14-17 лет	<b>554 705</b>	<b>528 416</b>							Children aged 14-17 years
Баткенская область	41 303	44 543	2 521	2 389	61,5	56,3	75,2	74,7	Batken
Джалал-Абадская область	114 447	103 731	2 417	1 854	64,9	50,5	59,9	41,3	Djalal-Abad
Иссык-Кульская область	40 795	43 938	2 277	2 510	59,3	66,5	61,1	69,8	Issyk-Kul
Нарынская область	26 453	26 809	2 238	2 291	62,4	68,8	52,0	53,6	Naryn
Ошская область	175 512	157 351	2 352	2 268	59,8	57,8	63,6	63,3	Osh
Таласская область	24 464	22 225	2 465	2 199	64,7	60,2	57,8	55,9	Talas
Чуйская область	68 079	68 663	2 267	2 450	58,1	66,3	63,1	67,1	Chui
г.Бишкек	63 649	61 156	2 287	2 018	63,2	54,9	60,3	55,3	Bishkek city
Суточное потребление			2 354	2 210	61,4	58,4	62,3	59,3	Daily intake
Суточные потребности			2 244	2 244	78,0	78,0	74,0	74,0	Daily needs
Баланс: (+) или (-)			110	-34	-17	-20	-12	-15	Balance: (+) or (-)

**Таблица 5: Баланс питания в виде энергетической ценности по результатам обследований  
ежедневного потребления и оценки ежедневных потребностей**  
(все население по квинтильным группам и регионам)

**Table 5: Food Balance expressed in nutritional values and compared to calculated daily needs, based on surveys of daily intake  
and on calculated daily needs based on recurrent nutritional surveillance**  
(total population by quintile groups and by region)

Область/Oblast	Население, человек		Ккал в день на душу населения		Белки в день на душу населения, грамм		Жиры в день на душу населения, грамм		
	Number, people		C/Calories C/d/p		Proteins g/d/p		Fats g/d/p		
	I полугодие / I half year		I полугодие / I half year		I полугодие / I half year		I полугодие / I half year		
	2011	2012	2011	2012	2011	2012	2011	2012	
<b>Первая квинтиль</b>	<b>1 096 272</b>	<b>1 109 170</b>							<b>First quintile</b>
Баткенская область	111 521	114 679	2 083	1 995	50,0	50,1	60,4	59,8	Batken
Джалал-Абадская область	292 986	416 524	2 106	1 432	57,0	38,5	52,6	29,8	Djalal-Abad
Иссык-Кульская область	119 838	109 695	1 789	1 982	44,1	51,1	48,9	59,4	Issyk-Kul
Нарынская область	102 103	97 874	1 907	1 951	50,3	59,5	40,8	43,4	Naryn
Ошская область	221 196	129 626	2 001	1 805	52,0	47,4	50,1	46,3	Osh
Таласская область	71 302	128 810	1 967	1 668	50,0	46,2	45,1	39,8	Talas
Чуйская область	171 068	95 579	1 934	2 008	49,3	54,0	48,6	46,7	Chui
г.Бишкек	6 258	16 382	1 655	1 467	43,9	39,6	42,5	38,9	Bishkek city
Суточное потребление			1 991	1 712	51,5	46,1	50,2	41,7	Daily intake
Суточные потребности			2 101	2 101	73,0	73,0	71,0	71,0	Daily needs
Баланс: (+) или (-)			-110	-389	-21	-27	-21	-29	Balance: (+) or (-)

Таблица 5: (продолжение)  
Table 5: (continued)

Область/Oblast	Население, человек		Ккал в день на душу населения		Белки в день на душу населения, грамм		Жиры в день на душу населения, грамм		
	Number, people		C/Calories C/d/p		Proteins g/d/p		Fats g/d/p		
	I полугодие / I half year		I полугодие / I half year		I полугодие / I half year		I полугодие / I half year		
	2011	2012	2011	2012	2011	2012	2011	2012	
<b>Вторая квинтиль</b>	<b>1 094 010</b>	<b>1 111 782</b>							<b>Second quintile</b>
Баткенская область	94 443	109 119	2 181	2 012	52,9	49,1	64,6	63,7	Batken
Джалал-Абадская область	277 709	267 312	2 153	1 699	57,3	45,9	52,2	37,1	Djalal-Abad
Иссык-Кульская область	85 755	108 783	2 054	2 041	55,1	53,7	52,7	53,4	Issyk-Kul
Нарынская область	34 783	29 271	2 019	2 097	58,3	61,9	46,8	51,2	Naryn
Ошская область	345 202	311 489	1 970	1 986	51,0	51,0	51,1	51,4	Osh
Таласская область	71 984	51 027	2 192	2 350	59,0	64,1	51,5	61,3	Talas
Чуйская область	121 101	145 767	2 294	2 411	60,9	66,1	59,2	64,1	Chui
г.Бишкек	63 034	89 014	1 787	1 572	46,9	42,6	45,9	41,1	Bishkek city
Суточное потребление			2 083	1 967	54,7	52,1	53,1	50,7	Daily intake
Суточные потребности			2 101	2 101	73,0	73,0	71,0	71,0	Daily needs
Баланс: (+) или (-)			-18	-134	-18	-21	-18	-20	Balance: (+) or (-)

Таблица 5: (продолжение)  
Table 5: (continued)

Область/Oblast	Население, человек		Ккал в день на душу населения		Белки в день на душу населения, грамм		Жиры в день на душу населения, грамм		
	Number, people		C/Calories C/d/p		Proteins g/d/p		Fats g/d/p		
	I полугодие / I half year		I полугодие / I half year		I полугодие / I half year		I полугодие / I half year		
	2011	2012	2011	2012	2011	2012	2011	2012	
<b>Третья квинтиль</b>	<b>1 096 260</b>	<b>1 110 926</b>							<b>Third quintile</b>
Баткенская область	88 618	87 828	2 172	2 057	53,2	49,0	65,0	67,8	Batken
Джалал-Абадская область	236 000	181 056	2 294	2 068	60,3	58,2	57,5	47,6	Djalal-Abad
Иссык-Кульская область	84 418	64 426	2 197	2 365	58,8	63,1	62,2	68,0	Issyk-Kul
Нарынская область	57 929	44 528	2 053	2 093	59,5	58,7	50,0	47,5	Naryn
Ошская область	285 307	380 970	2 178	1 958	57,6	51,0	56,9	52,8	Osh
Таласская область	36 635	20 768	2 474	2 620	66,5	72,8	60,1	71,3	Talas
Чуйская область	169 488	117 529	2 197	2 378	58,4	62,9	59,7	64,1	Chui
г.Бишкек	137 866	213 821	1 841	1 610	50,3	43,2	46,7	43,0	Bishkek city
Суточное потребление			2 168	2 003	57,5	53,2	57,0	53,5	Daily intake
Суточные потребности			2 101	2 101	73,0	73,0	71,0	71,0	Daily needs
Баланс: (+) или (-)			67	-98	-15	-20	-14	-18	Balance: (+)or (-)

Таблица 5: (продолжение)  
Table 5: (continued)

Область/Oblast	Население, человек		Ккал в день на душу населения		Белки в день на душу населения, грамм		Жиры в день на душу населения, грамм		
	Number, people		C/Calories C/d/p		Proteins g/d/p		Fats g/d/p		
	I полугодие / I half year		I полугодие / I half year		I полугодие / I half year		I полугодие / I half year		
	2011	2012	2011	2012	2011	2012	2011	2012	
<b>Четвертая квинтиль</b>	<b>1 095 366</b>	<b>1 110 338</b>							<b>Fourth quintile</b>
Баткенская область	83 604	59 854	2 371	2 291	58,4	56,0	72,5	74,1	Batken
Джалал-Абадская область	155 157	133 926	2 529	2 139	65,7	59,2	65,2	53,6	Djalal-Abad
Иссык-Кульская область	92 535	90 054	2 545	2 548	66,3	69,3	68,4	68,3	Issyk-Kul
Нарынская область	31 934	40 377	2 189	2 072	65,5	62,4	59,1	52,8	Naryn
Ошская область	267 755	324 824	2 313	2 197	58,9	57,8	63,9	61,3	Osh
Таласская область	29 198	21 619	3 021	3 175	80,2	86,6	73,8	88,0	Talas
Чуйская область	154 546	191 172	2 541	2 616	68,4	73,6	71,6	69,0	Chui
г.Бишкек	280 638	248 512	2 121	1 962	58,6	53,9	57,9	54,2	Bishkek city
Суточное потребление			2 366	2 258	62,5	61,4	64,8	61,6	Daily intake
Суточные потребности			2 101	2 101	73,0	73,0	71,0	71,0	Daily needs
Баланс: (+) или (-)			265	157	-11	-12	-6	-9	Balance: (+) or (-)

Таблица 5: (продолжение)  
Table 5: (continued)

Область/Oblast	Население, человек		Ккал в день на душу населения		Белки в день на душу населения, грамм		Жиры в день на душу населения, грамм		
	Number, people		C/Calories C/d/p		Proteins g/d/p		Fats g/d/p		
	I полугодие / I half year		I полугодие / I half year		I полугодие / I half year		I полугодие / I half year		
	2011	2012	2011	2012	2011	2012	2011	2012	
<b>Пятая квинтиль</b>	<b>1 095 711</b>	<b>1 109 671</b>							<b>Fifth quintile</b>
Баткенская область	62 916	77 369	2 940	2 686	75,6	64,8	90,6	85,3	Batken
Джалал-Абадская область	74 792	55 408	3 081	2 562	82,5	66,9	86,1	68,7	Djalal-Abad
Иссык-Кульская область	61 974	75 045	3 333	3 104	89,0	84,0	93,3	87,0	Issyk-Kul
Нарынская область	35 389	52 897	2 337	2 353	65,6	65,6	62,3	59,0	Naryn
Ошская область	267 274	256 689	2 452	2 612	63,4	69,2	69,6	73,8	Osh
Таласская область	22 699	13 102	3 681	2 917	99,7	82,2	95,4	77,0	Talas
Чуйская область	198 668	272 533	2 990	3 080	81,1	87,7	96,5	95,8	Chui
г.Бишкек	372 000	306 629	2 634	2 622	73,9	74,1	78,8	79,9	Bishkek city
Суточное потребление			2 754	2 757	74,4	75,7	81,6	81,7	Daily intake
Суточные потребности			2 101	2 101	73,0	73,0	71,0	71,0	Daily needs
Баланс: (+) или (-)			653	656	1	3	11	11	Balance: (+) or (-)

**Таблица 6: Продовольственный баланс домохозяйств в стоимостном выражении по результатам обследований уровня жизни**

(все население по доходным квинтильным группам и регионам, сомов)

**Table 6: Household Food Balance expressed in value terms based on results of surveys of living standards**

(total population by income quintile groups and by region, som)

Область/Oblast	Население, человек		Среднедушевые доходы, сом/чел/месяц		Среднедушевые расходы на питание, сом/чел/месяц		Баланс, %		
	Number, people		Average per capita available income, s/ps/month		Average per capita food expenditure, s/ps/month		Balance, %		
	I полугодие / I half year		I полугодие / I half year		I полугодие / I half year		I полугодие / I half year		
	2011	2012	2011	2012	2011	2012	2011	2012	
<b>Все население</b>	<b>5 477 620</b>	<b>5 551 888</b>							<b>Total population</b>
Баткенская область	441 101	448 849	2 840	3 059	1 034	991	36,4	32,4	Batken
Джалал-Абадская область	1 036 644	1 054 226	2 280	2 500	1 045	950	45,8	38,0	Djalal-Abad
Иссык-Кульская область	444 520	448 003	2 886	2 890	1 270	1 171	44,0	40,5	Issyk-Kul
Нарынская область	262 137	264 947	2 182	2 980	747	765	34,2	25,7	Naryn
Ошская область	1 386 734	1 403 598	2 480	3 152	1 258	1 279	50,7	40,6	Osh
Таласская область	231 819	235 327	2 354	2 639	961	749	40,8	28,4	Talas
Чуйская область	814 870	822 581	2 912	3 555	1 363	1 532	46,8	43,1	Chui
г.Бишкек	859 795	874 357	3 378	3 726	1 796	1 434	53,1	38,5	Bishkek city
Средневзвешенный баланс			2 690	3 120	1 263	1 199	47,0	38,4	Average weighted balance

Таблица 6: (продолжение)  
Table 6: (continued)

Область/Oblast	Население, человек		Среднедушевые доходы, сом/чел/месяц		Среднедушевые расходы на питание, сом/чел/месяц		Баланс, %		
	Number, people		Average per capita available income, s/ps/month		Average per capita food expenditure, s/ps/month		Balance, %		
	I полугодие / I half year		I полугодие / I half year		I полугодие / I half year		I полугодие / I half year		
	2011	2012	2011	2012	2011	2012	2011	2012	
<b>Первая квинтиль</b>	<b>1 097 830</b>	<b>1 109 667</b>							<b>First quintile</b>
Баткенская область	53 497	89 572	1 080	1 178	790	803	73,1	68,1	Batken
Джалал-Абадская область	233 032	336 731	925	994	740	831	80,0	83,6	Djalal-Abad
Иссык-Кульская область	132 290	136 560	892	988	844	815	94,7	82,5	Issyk-Kul
Нарынская область	89 682	68 478	900	1 015	588	525	65,4	51,7	Naryn
Ошская область	297 395	256 778	1 061	1 150	935	1 000	88,2	87,0	Osh
Таласская область	77 608	58 129	926	867	704	497	76,0	57,4	Talas
Чуйская область	153 203	102 029	882	1 149	999	824	113,3	71,8	Chui
г.Бишкек	61 122	61 390	1 113	1 285	1 315	968	118,1	75,4	Bishkek city
Средневзвешенный баланс			968	1 069	861	837	89,0	78,3	Average weighted balance



Таблица 6: (продолжение)  
Table 6: (continued)

Область/Oblast	Население, человек		Среднедушевые доходы, сом/чел/месяц		Среднедушевые расходы на питание, сом/чел/месяц		Баланс, %		
	Number, people		Average per capita available income, s/ps/month		Average per capita food expenditure, s/ps/month		Balance, %		
	I полугодие / I half year		I полугодие / I half year		I полугодие / I half year		I полугодие / I half year		
	2011	2012	2011	2012	2011	2012	2011	2012	
<b>Вторая квинтиль</b>	<b>1 093 951</b>	<b>1 112 136</b>							<b>Second quintile</b>
Баткенская область	89 908	102 498	1 698	1 930	737	862	43,4	44,7	Batken
Джалал-Абадская область	228 218	211 790	1 683	1 941	943	948	56,0	48,8	Djalal-Abad
Иссык-Кульская область	76 937	91 276	1 641	1 910	1 139	1 067	69,4	55,9	Issyk-Kul
Нарынская область	47 078	44 934	1 595	1 912	600	601	37,6	31,4	Naryn
Ошская область	347 497	254 742	1 675	1 971	1 151	1 094	68,7	55,5	Osh
Таласская область	37 567	62 313	1 675	1 965	799	667	47,7	33,9	Talas
Чуйская область	139 304	171 313	1 684	1 886	993	1 170	59,0	62,0	Chui
г.Бишкек	127 441	173 271	1 670	1 919	1 473	1 098	88,2	57,2	Bishkek city
Средневзвешенный баланс			1 673	1 932	1 054	1 011	63,0	52,3	Average weighted balance

Таблица 6: (продолжение)  
Table 6: (continued)

Область/Oblast	Население, человек		Среднедушевые доходы, сом/чел/месяц		Среднедушевые расходы на питание, сом/чел/месяц		Баланс, %		
	Number, people		Average per capita available income, s/ps/month		Average per capita food expenditure, s/ps/month		Balance, %		
	I полугодие / I half year		I полугодие / I half year		I полугодие / I half year		I полугодие / I half year		
	2011	2012	2011	2012	2011	2012	2011	2012	
<b>Третья квинтиль</b>	<b>1 096 176</b>	<b>1 109 143</b>							<b>Third quintile</b>
Баткенская область	124 505	112 891	2 197	2 642	877	909	39,9	34,4	Batken
Джалал-Абадская область	247 362	171 359	2 205	2 621	1 093	903	49,6	34,5	Djalal-Abad
Иссык-Кульская область	59 717	72 355	2 231	2 588	1 383	1 160	62,0	44,8	Issyk-Kul
Нарынская область	41 460	42 679	2 240	2 559	748	795	33,4	31,1	Naryn
Ошская область	262 283	374 964	2 199	2 610	1 303	1 174	59,3	45,0	Osh
Таласская область	34 357	42 642	2 209	2 599	1 020	721	46,2	27,8	Talas
Чуйская область	149 430	145 985	2 302	2 623	1 379	1 370	59,9	52,2	Chui
г.Бишкек	177 062	146 268	2 261	2 563	1 468	1 203	64,9	46,9	Bishkek city
Средневзвешенный баланс			2 228	2 607	1 219	1 102	54,7	42,3	Average weighted balance

Таблица 6: (продолжение)  
Table 6: (continued)

Область/Oblast	Население, человек		Среднедушевые доходы, сом/чел/месяц		Среднедушевые расходы на питание, сом/чел/месяц		Баланс, %		
	Number, people		Average per capita available income, s/ps/month		Average per capita food expenditure, s/ps/month		Balance, %		
	I полугодие / I half year		I полугодие / I half year		I полугодие / I half year		I полугодие / I half year		
	2011	2012	2011	2012	2011	2012	2011	2012	
<b>Четвертая квинтиль</b>	<b>1 094 525</b>	<b>1 108 968</b>							<b>Fourth quintile</b>
Баткенская область	74 631	71 607	3 015	3 532	1 228	1 136	40,7	32,2	Batken
Джалал-Абадская область	214 828	202 115	2 948	3 560	1 162	1 040	39,4	29,2	Djalal-Abad
Иссык-Кульская область	77 743	60 124	3 003	3 573	1 250	1 278	41,6	35,8	Issyk-Kul
Нарынская область	54 078	56 629	3 096	3 536	859	814	27,8	23,0	Naryn
Ошская область	242 400	269 764	2 953	3 580	1 381	1 352	46,8	37,8	Osh
Таласская область	43 681	34 825	3 020	3 500	1 275	944	42,2	27,0	Talas
Чуйская область	186 063	179 632	3 050	3 627	1 423	1 674	46,7	46,2	Chui
г.Бишкек	201 102	234 272	3 101	3 600	1 815	1 368	58,5	38,0	Bishkek city
Средневзвешенный баланс			3 013	3 580	1 375	1 293	45,6	36,1	Average weighted balance

Таблица 6: (продолжение)  
Table 6: (continued)

Область/Oblast	Население, человек		Среднедушевые доходы, сом/чел/месяц		Среднедушевые расходы на питание, сом/чел/месяц		Баланс, %		
	Number, people		Average per capita available income, s/ps/month		Average per capita food expenditure, s/ps/month		Balance, %		
	I полугодие / I half year		I полугодие / I half year		I полугодие / I half year		I полугодие / I half year		
	2011	2012	2011	2012	2011	2012	2011	2012	
<b>Пятая квинтиль</b>	<b>1 095 139</b>	<b>1 111 974</b>							<b>Fifth quintil</b>
Баткенская область	98 560	72 282	5 517	7 172	1 486	1 393	26,9	19,4	Batken
Джалал-Абадская область	113 204	132 230	5 171	5 449	1 549	1 176	29,9	21,6	Djalal-Abad
Иссык-Кульская область	97 833	87 688	6 866	6 651	1 897	1 766	27,6	26,6	Issyk-Kul
Нарынская область	29 838	52 227	5 225	6 218	1 251	1 145	23,9	18,4	Naryn
Ошская область	237 159	247 351	5 268	6 801	1 644	1 838	31,2	27,0	Osh
Таласская область	38 606	37 417	5 262	5 758	1 230	1 129	23,4	19,6	Talas
Чуйская область	186 871	223 622	5 842	6 482	1 862	2 124	31,9	32,8	Chui
г.Бишкек	293 068	259 156	5 459	6 283	2 221	1 957	40,7	31,2	Bishkek city
Средневзвешенный баланс			5 571	6 405	1 809	1 754	32,5	27,4	Average weighted balance

**Таблица 7: Продовольственный баланс домохозяйств в стоимостном выражении по результатам обследований уровня жизни**  
(все население по расходным квинтильным группам и регионам, сомов)

**Table 7: Household Food Balance expressed in value terms based on results of surveys of living standards**  
(total population by expenditure quintile groups and by region, som)

Область/Oblast	Население, человек		Общие среднедушевые расходы, сом/чел/месяц		Среднедушевые расходы на питание, сом/чел/месяц		Баланс, %		
	Number, people		Total per capita expenditures s/ps/month		Average per capita food expenditure, s/ps/month		Balance, %		
	I полугодие / I half year		I полугодие / I half year		I полугодие / I half year		I полугодие / I half year		
	2011	2012	2011	2012	2011	2012	2011	2012	
<b>Все население</b>	<b>5 477 620</b>	<b>5 551 888</b>							<b>Total population</b>
Баткенская область	441 101	448 849	2 315	2 285	1 034	991	44,6	43,4	Batken
Джалал-Абадская область	1 036 644	1 054 226	1 990	1 713	1 045	950	52,5	55,4	Djalal-Abad
Иссык-Кульская область	444 520	448 003	2 376	2 247	1 270	1 171	53,5	52,1	Issyk-Kul
Нарынская область	262 137	264 947	2 094	2 290	747	765	35,7	33,4	Naryn
Ошская область	1 386 734	1 403 598	2 530	2 523	1 258	1 279	49,7	50,7	Osh
Таласская область	231 819	235 327	2 028	1 515	961	749	47,4	49,5	Talas
Чуйская область	814 870	822 581	2 808	2 965	1 363	1 532	48,5	51,7	Chui
г.Бишкек	859 795	874 357	3 768	3 131	1 796	1 434	47,6	45,8	Bishkek city
Средневзвешенный баланс			2 592	2 435	1 263	1 199	48,8	49,2	Average weighted balance

Таблица 7: (продолжение)

Table 7: (continued)

Область/Oblast	Население, человек		Общие среднедушевые расходы, сом/чел/месяц		Среднедушевые расходы на питание, сом/чел/месяц		Баланс, %		
	Number, people		Total per capita expenditures s/ps/month		Average per capita food expenditure, s/ps/month		Balance, %		
	I полугодие / I half year		I полугодие / I half year		I полугодие / I half year		I полугодие / I half year		
	2011	2012	2011	2012	2011	2012	2011	2012	
<b>Первая квинтиль</b>	<b>1 096 272</b>	<b>1 109 170</b>							<b>First quintile</b>
Баткенская область	111 521	114 679	1 070	1 062	586	591	54,8	55,7	Batken
Джалал-Абадская область	292 986	416 524	1 072	1 022	556	576	51,9	56,4	Djalal-Abad
Иссык-Кульская область	119 838	109 695	1 054	993	654	622	62,1	62,7	Issyk-Kul
Нарынская область	102 103	97 874	912	910	402	400	44,1	44,0	Naryn
Ошская область	221 196	129 626	1 042	1 161	640	717	61,4	61,8	Osh
Таласская область	71 302	128 810	1 046	930	530	457	50,6	49,2	Talas
Чуйская область	171 068	95 579	1 093	929	620	537	56,8	57,8	Chui
г.Бишкек	6 258	16 382	1 022	1 109	610	576	59,7	51,9	Bishkek city
Средневзвешенный баланс			1 050	1 012	581	566	55,3	55,9	Average weighted balance

Таблица 7: (продолжение)

Table 7: (continued)

Область/Oblast	Население, человек		Общие среднедушевые расходы, сом/чел/месяц		Среднедушевые расходы на питание, сом/чел/месяц		Баланс, %		
	Number, people		Total per capita expenditures s/ps/month		Average per capita food expenditure, s/ps/month		Balance, %		
	I полугодие / I half year		I полугодие / I half year		I полугодие / I half year		I полугодие / I half year		
	2011	2012	2011	2012	2011	2012	2011	2012	
<b>Вторая квинтиль</b>	<b>1 094 010</b>	<b>1 111 782</b>							<b>Second quintile</b>
Баткенская область	94 443	109 119	1 616	1 607	833	914	51,5	56,9	Batken
Джалал-Абадская область	277 709	267 312	1 628	1 623	942	937	57,8	57,7	Djalal-Abad
Иссык-Кульская область	85 755	108 783	1 621	1 569	894	902	55,1	57,5	Issyk-Kul
Нарынская область	34 783	29 271	1 616	1 587	653	534	40,4	33,7	Naryn
Ошская область	345 202	311 489	1 597	1 550	980	890	61,3	57,4	Osh
Таласская область	71 984	51 027	1 563	1 581	821	835	52,5	52,8	Talas
Чуйская область	121 101	145 767	1 650	1 624	952	955	57,7	58,8	Chui
г.Бишкек	63 034	89 014	1 679	1 621	932	797	55,5	49,2	Bishkek city
Средневзвешенный баланс			1 618	1 593	924	894	57,1	56,1	Average weighted balance

Таблица 7: (продолжение)  
Table 7: (continued)

Область/Oblast	Население, человек		Общие среднедушевые расходы, сом/чел/месяц		Среднедушевые расходы на питание, сом/чел/месяц		Баланс, %		
	Number, people		Total per capita expenditures s/ps/month		Average per capita food expenditure, s/ps/month		Balance, %		
	I полугодие / I half year		I полугодие / I half year		I полугодие / I half year		I полугодие / I half year		
	2011	2012	2011	2012	2011	2012	2011	2012	
<b>Третья квинтиль</b>	<b>1 096 260</b>	<b>1 110 926</b>							<b>Third quintile</b>
Баткенская область	88 618	87 828	2 129	2 049	963	963	45,2	47,0	Batken
Джалал-Абадская область	236 000	181 056	2 185	2 079	1 146	1 084	52,5	52,1	Djalal-Abad
Иссык-Кульская область	84 418	64 426	2 198	2 069	1 260	1 113	57,3	53,8	Issyk-Kul
Нарынская область	57 929	44 528	2 204	2 121	818	798	37,1	37,6	Naryn
Ошская область	285 307	380 970	2 175	2 062	1 178	1 185	54,2	57,4	Osh
Таласская область	36 635	20 768	2 113	2 039	1 004	1 144	47,5	56,1	Talas
Чуйская область	169 488	117 529	2 133	2 061	1 280	1 198	60,0	58,1	Chui
г.Бишкек	137 866	213 821	2 169	2 110	1 179	993	54,4	47,1	Bishkek city
Средневзвешенный баланс			2 168	2 075	1 151	1 095	53,1	52,8	Average weighted balance



Таблица 7: (продолжение)  
Table 7: (continued)

Область/Oblast	Население, человек		Общие среднедушевые расходы, сом/чел/месяц		Среднедушевые расходы на питание, сом/чел/месяц		Баланс, %		
	Number, people		Total per capita expenditures s/ps/month		Average per capita food expenditure, s/ps/month		Balance, %		
	I полугодие / I half year		I полугодие / I half year		I полугодие / I half year		I полугодие / I half year		
	2011	2012	2011	2012	2011	2012	2011	2012	
<b>Четвертая квинтиль</b>	<b>1 095 366</b>	<b>1 110 338</b>							<b>Fourth quintile</b>
Баткенская область	83 604	59 854	2 891	2 707	1 225	1 194	42,4	44,1	Batken
Джалал-Абадская область	155 157	133 926	2 883	2 612	1 539	1 474	53,4	56,4	Djalal-Abad
Иссык-Кульская область	92 535	90 054	2 896	2 675	1 503	1 296	51,9	48,5	Issyk-Kul
Нарынская область	31 934	40 377	2 911	2 740	1 211	1 028	41,6	37,5	Naryn
Ошская область	267 755	324 824	2 901	2 665	1 551	1 362	53,5	51,1	Osh
Таласская область	29 198	21 619	2 799	2 664	1 517	1 477	54,2	55,4	Talas
Чуйская область	154 546	191 172	2 909	2 705	1 594	1 536	54,8	56,8	Chui
г.Бишкек	280 638	248 512	2 972	2 733	1 510	1 255	50,8	45,9	Bishkek city
Средневзвешенный баланс			2 914	2 687	1 505	1 357	51,7	50,5	Average weighted balance

Таблица 7: (продолжение)

Table 7: (continued)

Область/Oblast	Население, человек		Общие среднедушевые расходы, сом/чел/месяц		Среднедушевые расходы на питание, сом/чел/месяц		Баланс, %		
	Number, people		Total per capita expenditures s/ps/month		Average per capita food expenditure, s/ps/month		Balance, %		
	I полугодие / I half year		I полугодие / I half year		I полугодие / I half year		I полугодие / I half year		
	2011	2012	2011	2012	2011	2012	2011	2012	
<b>Пятая квинтиль</b>	<b>1 095 711</b>	<b>1 109 671</b>							<b>Fifth quintile</b>
Баткенская область	62 916	77 369	5 070	4 997	1 974	1 567	38,9	31,4	Batken
Джалал-Абадская область	74 792	55 408	4 455	3 985	1 994	2 119	44,8	53,2	Djalal-Abad
Иссык-Кульская область	61 974	75 045	5 444	4 700	2 650	2 260	48,7	48,1	Issyk-Kul
Нарынская область	35 389	52 897	5 059	5 033	1 299	1 342	25,7	26,7	Naryn
Ошская область	267 274	256 689	4 972	4 895	1 919	2 070	38,6	42,3	Osh
Таласская область	22 699	13 102	5 463	4 286	1 981	1 458	36,3	34,0	Talas
Чуйская область	198 668	272 533	5 488	4 968	2 142	2 331	39,0	46,9	Chui
г.Бишкек	372 000	306 629	5 362	4 711	2 405	2 116	44,9	44,9	Bishkek city
Средневзвешенный баланс			5 208	4 810	2 155	2 085	41,4	43,3	Average weighted balance

**Share of population using adequately iodized salt (15 mkg/gr and more)***(in %)*

	<b>2007</b>	<b>2008</b>	<b>2009</b>	<b>2010</b>	<b>2011</b>
<b>Kyrgyz Republic</b>	<b>73,4</b>	<b>80,3</b>	<b>81,7</b>	<b>81,1</b>	<b>86,7</b>
Batken oblast	86,2	89,5	93,7	92,9	82,6
Djalal-Abad oblast	65,1	72,9	75,6	78,0	83,5
Issyk-Kul oblast	50,0	76,4	64,9	64,0	82,8
Naryn oblast	68,3	59,2	89,4	79,0	89,2
Osh oblast	71,0	77,6	77,7	78,1	84,6
Talas oblast	65,0	76,2	66,3	71,0	69,3
Chui oblast	71,4	78,9	81,6	87,1	89,3
Bishkek city	99,5	100,0	100,0	99,7	99,6

Source: Integrated sampling survey of household budgets.

**Note:** In 2011, 0,4% of population used non-iodized salt, and 12,5 % of population used inadequately iodized salt (less than 15 mkg/gr).

**Таблица 9. Индикаторы продовольственной безопасности  
Кыргызской Республики**

**Table 9. Food Security Indicators of the Kyrgyz Republic**

**Таблица 9.1. Уровень суточной энергетической ценности рациона человека**

(ккал)

**Table 9.1. Level of daily energy value of people diet**

(k/Cal)

Период/Period	Фактическая ценность рациона <sup>1</sup> /Actual dietary value <sup>1</sup>	Минимальная норма/Minimal ratio	Фактическое значение индикатора (гр. 2/гр.3)/Actual meaning of the indicator (paragraph 2/ paragraph 3)
1	2	3	4
Янв.-март /Jan-March 2007	2196	2431	0,90
янв.-июнь/Jan-June 2007	2184	2431	0,90
янв.-сент./Jan-Sept. 2007	2253	2431	0,93
2007	2218	2431	0,91
янв.-март/Jan-March 2008	2287	2431	0,94
янв.-июнь/Jan-June 2008	2277	2431	0,94
янв.-сент./Jan-Sept. 2008	2299	2431	0,95
2008	2295	2431	0,94
янв.-март/Jan-March 2009	2395	2431	0,99
янв.-июнь/Jan-June 2009	2348	2431	0,97
янв.-сент. /Jan-Sept. 2009	2356	2101	1,12
2009	2358	2101	1,12
янв.-март/Jan-March 2010	2380	2101	1,13
янв.-июнь/Jan-June 2010	2323	2101	1,11
янв.-сент./Jan-Sept. 2010	2305	2101	1,10
2010	2319	2101	1,10
янв.-март/Jan-March 2011	2338	2101	1,11
янв.-июнь/Jan-June 2011	2272	2101	1,08
янв.-сент./Jan-Sept. 2011	2260	2101	1,08
2011	2281	2102	1,09
янв.-март/Jan-March 2012	2178	2101	1,04
янв.-июнь/Jan-June 2012	2139	2101	1,02

<sup>1</sup> По результатам интегрированного выборочного обследования бюджетов домашних хозяйств и рабочей силы./<sup>1</sup> According to results of the Integrated Sampling Survey of Household Budgets and Labour Force.

**Таблица 9.2. Достаточность потребления отдельного продукта <sup>2</sup>**  
(в среднем на душу населения, кг в месяц)

**Table 9.2. Sufficiency of selected foods consumption <sup>2</sup>**  
(average per capita, kg. per month)

	Фактическое потребление/Actual consumption								
	Хлеб и хлебо- продукты/ Bread and bread products	Мясо и мясопро- дукты/Me at and meat products	Молоко и молочные продукты/ Milk and dairy products	Яйца (штук)/ Eggs (pieces)	Овощи и бахчевые/ Vegetables and melons	Фрукты и ягоды/ Fruits and berries	Картофель/P otatoes	Сахар/ Sugar	Масло раститель- ное/ Vegetable oil
Янв.-март / Jan-March 2007	15,2	3,0	10,8	5,0	12,0	2,1	8,2	1,3	0,5
Янв.-июнь/ Jan-June 2007	15,4	3,0	15,5	5,1	6,2	1,4	8,0	1,5	0,4
Янв.-сент./ Jan-Sept. 2007	16,2	3,2	17,4	5,1	10,9	2,6	8,4	1,6	0,5
2007	15,3	2,9	17,4	5,9	12,2	3,0	8,0	1,8	0,5
Янв.-март/ Jan-March 2008	15,3	3,0	10,9	5,2	12,2	2,1	8,2	1,4	0,5
Янв.-июнь/ Jan-June 2008	15,4	3,0	15,7	5,2	6,2	1,2	8,0	1,6	0,5
Янв.-сент./ Jan-Sept 2008	16,2	3,3	17,4	5,2	11,0	2,0	8,4	1,6	0,6
2008	15,9	3,1	18,1	6,3	12,6	2,5	8,3	1,8	0,6
Янв.-март/ Jan-March 2009	16,1	3,2	12,2	5,9	12,7	0,9	8,3	1,7	0,9
Янв.-июнь/ Jan-June 2009	16,0	3,1	16,5	5,5	6,6	0,5	8,4	1,7	0,7
Янв.-сент./ Jan-Sept. 2009	16,6	3,4	18,1	5,3	12,0	2,2	8,5	1,6	0,6
2009	15,9	3,2	17,7	6,6	12,6	2,5	8,2	1,8	0,7
Янв.-март / Jan-March 2010	16,0	3,4	12,2	6,2	12,6	1,4	8,2	1,7	1,0
Янв.-июнь/ Jan-June 2010	15,9	3,3	16,5	5,6	6,3	0,5	8,3	1,7	1,0
Янв.-сент./ Jan-Sept. 2010	16,4	3,3	17,8	5,6	12,1	2,3	8,3	1,6	0,7
2010	15,9	3,2	17,7	6,6	12,5	2,5	8,1	1,8	1,0
Янв.-март/ Jan-March 2011	16,1	3,5	12,3	6,2	10,5	1,0	8,3	1,6	1,0
Янв.-июнь/ Jan-June 2011	15,9	3,3	16,5	5,9	4,4	0,5	8,1	1,7	1,0
Янв.-сент./ Jan-Sept. 2011	16,3	3,3	17,7	5,7	12,0	2,3	8,3	1,5	1,0
2011	15,8	3,2	17,8	6,8	12,5	2,4	8,2	1,8	1,0
Янв.-март/ Jan-March 2012 <sup>1</sup>	16,1	3,4	12,3	6,2	7,4	1,0	8,4	1,5	1,0
Янв.-июнь/ Jan-June 2012 <sup>1</sup>	15,9	3,3	16,5	5,9	4,5	0,3	8,2	1,6	1,0
Янв.-сент./ Jan-Sept. 2012 <sup>1</sup>	16,2	3,3	17,8	5,8	12,0	2,3	8,4	1,5	1,0
2012 <sup>1</sup>	15,7	3,2	17,9	6,7	12,6	2,4	8,3	1,7	0,9

<sup>1</sup> Данные предварительные/Preliminary data

<sup>2</sup> В пересчете на первичный продукт./Expressed in primary product.

**Таблица 9.3. Экономическая доступность продуктов питания**  
(в среднем на душу населения, сомов в месяц)

**Table 9.3. Economical availability of foodstuffs**  
(average per capita, soms per month)

Период/Period	Размер среднемесячных затрат домохозяйств на питание/Monthly average expenditures of households for food	Размер среднемесячных совокупных затрат домохозяйств/Monthly average aggregated expenditures of households	Фактическое значение индикатора (гр. 2/гр.3)*100/ Actual meaning of the indicator (paragraph 2/ paragraph 3)*100
1	2	3	4
Янв.-март /Jan-March 2007	567	1178	48
Янв.-июнь/Jan-June 2007	597	1280	47
Янв.-сент./Jan-Sept. 2007	675	1466	46
2007	720	1579	46
Янв.-март/Jan-March 2008	887	1600	55
Янв.-июнь/Jan-June 2008	984	1890	52
Янв.-сент./Jan-Sept 2008	1052	2090	50
2008	1093	2257	48
Янв.-март/Jan-March 2009	1089	2143	51
Янв.-июнь/Jan-June 2009	1076	2177	49
Янв.-сент./Jan-Sept. 2009	1089	2136	51
2009	1095	2264	48
Янв.-март /Jan-March 2010	1018	2198	46
Янв.-июнь/Jan-June 2010	1039	2241	46
Янв.-сент./Jan-Sept. 2010	1080	2366	46
2010	1106	2449	45
Янв.-март/Jan-March 2011	1233	2493	49
Янв.-июнь/Jan-June 2011	1263	2592	49
Янв.-сент./Jan-Sept. 2011	1283	2658	48
2011	1299	2762	47
Янв.-март/Jan-March 2012	1209	2480	49
Янв.-июнь/Jan-June 2012	1199	2435	49

**Таблица 9.4. Дифференциация расходов на питание  
по социальным группам**

*(в среднем на душу населения, сомов в месяце)*

**Table 9.4. Differentiation of expenditures for food by social groups**

*(average per capita, soms per month)*

Период/Period	Первая квинтильная группа (с наименьшими доходами)/The first quintile group (with the lowest incomes)	Пятая квинтильная группа (с наибольшими доходами)/The fifth quintile group (with the highest incomes)
Янв.-март /Jan-March 2007	215	1129
Янв.-июнь/Jan-June 2007	243	1143
Янв.-сент./Jan-Sept. 2007	284	1275
2007	305	1317
Янв.-март/Jan-March 2008	309	1665
Янв.-июнь/Jan-June 2008	399	1792
Янв.-сент./Jan-Sept 2008	472	1836
2008	718	1565
Янв.-март/Jan-March 2009	708	1629
Янв.-июнь/Jan-June 2009	663	1623
Янв.-сент./Jan-Sept. 2009	670	1635
2009	648	1669
Янв.-март /Jan-March 2010	614	1574
Янв.-июнь/Jan-June 2010	583	1615
Янв.-сент./Jan-Sept. 2010	608	1692
2010	671	1680
Янв.-март/Jan-March 2011	790	1742
Янв.-июнь/Jan-June 2011	861	1809
Янв.-сент./Jan-Sept. 2011	879	1870
2011	893	1878
Янв.-март/Jan-March 2012	814	1737
Янв.-июнь/Jan-June 2012	837	1754

**Таблица 9.5. Емкость внутреннего рынка отдельных продуктов <sup>2</sup>**

(тыс. тонн)

**Table 9.5. Capacity of internal market of selected products<sup>2</sup>**

(thsd. tons)

	Хлеб и хлебо- продукты/ Bread and bread products	Мясо и мясопро- дукты/ Meat and meat products	Молоко и молочные продукты/ Milk and dairy products	Яйца (млн. штук)/ Eggs (mln. pieces)	Овощи и бахчевые/ Vegetables and melons	Фрукты и ягоды/ Fruits and berries	Картофель/ Potatoes	Сахар/ Sugar	Масло раститель- ное/ Vegetable oil
Янв.-март / Jan-March 2007	237,3	46,3	168,8	78,5	188,4	32,3	128,2	20,0	7,5
Янв.-июнь/ Jan-June 2007	483,1	92,6	487,1	158,7	194,8	43,4	250,1	48,4	13,1
Янв.-сент./ Jan-Sept. 2007	761,2	150,1	818,9	242,3	512,1	124,3	394,3	75,4	24,9
2007	963,2	182,3	1094,1	371,7	766,8	188,5	502,5	111,1	31,4
Янв.-март/ Jan-March 2008	241,6	48,1	171,9	81,7	193,1	32,9	129,5	22,8	7,7
Янв.-июнь/ Jan-June 2008	487,1	93,6	494,9	163,9	196,1	37,5	252,0	50,8	16,1
Янв.-сент./ Jan-Sept 2008	770,1	155,0	825,9	248,3	524,0	96,7	396,8	76,4	28,5
2008	968,3	191,8	1103,2	382,4	768,7	152,0	506,7	112,3	35,0
Янв.-март/ Jan-March 2009	245,9	49,3	186,7	90,2	194,3	14,1	127,2	25,3	14,3
Янв.-июнь/ Jan-June 2009	491,0	95,1	505,7	168,9	201,4	14,1	258,5	51,3	20,7
Янв.-сент./ Jan-Sept. 2009	765,4	156,1	832,7	244,3	552,2	99,6	391,8	72,7	28,8
2009	976,9	198,9	1089,5	405,1	774,3	154,4	504,6	109,1	40,4
Янв.-март / Jan-March 2010	248,3	52,8	190,0	96,5	195,9	22,0	127,2	26,3	15,0
Янв.-июнь/ Jan-June 2010	494,1	101,2	511,6	173,7	196,2	14,4	258,4	51,5	30,0
Янв.-сент./ Jan-Sept. 2010	766,6	153,1	829,8	262,3	563,9	105,8	387,7	74,7	32,8
2010	991,7	201,0	1103,1	412,3	778,9	155,8	504,8	110,6	62,4
Янв.-март/ Jan-March 2011	252,1	54,8	193,6	97,6	165,3	16,4	130,5	25,5	15,1
Янв.-июнь/ Jan-June 2011	499,4	102,5	518,0	185,7	138,3	14,7	253,9	53,1	31,4
Янв.-сент./ Jan-Sept. 2011	771,4	158,0	837,8	268,7	565,2	106,4	390,8	70,0	45,3
2011	999,3	203,6	1120,5	432,1	788,7	151,4	517,8	112,6	62,3
Янв.-март/ Jan-March 2012 <sup>1</sup>	256,1	54,6	195,8	99,5	118,3	16,6	133,3	23,7	15,9
Янв.-июнь/ Jan-June 2012 <sup>1</sup>	506,7	105,2	528,5	187,2	144,6	11,0	261,1	52,7	31,9
Янв.-сент./ Jan-Sept. 2012 <sup>1</sup>	777,0	159,6	856,6	280,1	576,0	111,3	402,6	71,7	46,2
2012 <sup>1</sup>	1009,6	204,4	1149,9	432,6	810,3	156,3	530,5	107,1	57,8

<sup>1</sup> Данные предварительные/Preliminary data

<sup>2</sup> В пересчете на первичный продукт./Expressed in primary product.



**Таблица 9.6. Баланс фактического уровня производства продовольствия в Кыргызской Республике**  
(тыс. тонн)

**Table 9.6. Balance of actual level of food production in the Kyrgyz Republic**  
(thsd. tons)

	Производство основных видов продовольствия/Production of main types of food								
	Пшеница в весе после доработки/ Wheat in net weight	Мясо в убойном весе/ Meat in slaughter weight	Молоко сырое/ Raw milk	Яйца (млн. штук)/ Eggs (mln. pieces)	Овощи и бахчевые/ Vegetables and melons	Фрукты и ягоды/ Fruits and berries	Картофель/ Potatoes	Сахар/ Sugar	Масло растительное/ Vegetable oil
Янв.-март / Jan-March 2007	-	42,2	204,5	70,1	-	-	-	-	4,5
Янв.-июнь/ Jan-June 2007	24,5	84,9	570,8	190,5	32,7	1,8	21,9	9,5	7,4
Янв.-сент./ Jan-Sept. 2007	678,6	132,3	973,6	293,7	711,6	122,5	974,3	16,0	11,2
2007	708,9	183,1	1240,0	373,7	908,9	180,5	1373,8	36,8	17,6
Янв.-март/ Jan-March 2008	-	42,8	210,0	72,7	-	-	-	6,6	4,2
Янв.-июнь/ Jan-June 2008	37,9	85,6		193,1	39,4	6,8	22,1	10,7	7,6
Янв.-сент./ Jan-Sept 2008	720,0	133,3	998,7	292,4	742,5	140,8	976,7	10,8	11,0
2008	746,2	184,2	1273,5	369,3	947,0	185,4	1334,9	10,9	18,3
Янв.-март/ Jan-March 2009	-	43,3	216,7	67,9	-	-	-	0,0	4,9
Янв.-июнь/ Jan-June 2009	29,0	86,8	607,1	186,1	41,9	4,8	25,4	0,1	7,8
Янв.-сент./ Jan-Sept. 2009	943,3	135,1	1032,6	291,1	791,4	155,8	899,3	0,2	12,1
2009	1056,7	185,5	1314,7	369,3	969,7	200,5	1393,1	5,9	20,6
Янв.-март / Jan-March 2010	-	44,1	224,2	71,5	-	-	-	0,0	5,6
Янв.-июнь/ Jan-June 2010	9,5	88,1	628,4	191,4	28,0	3,7	19,0	0,0	9,5
Янв.-сент./ Jan-Sept. 2010	756,3	138,7	1070,6	294,4	803,4	146,0	781,3	0,1	12,8
2010	813,3	187,8	1359,9	373,1	969,3	193,1	1339,4	14,0	18,1
Янв.-март/ Jan-March 2011	-	44,4	223,8	73,8	-	-	-	0,0	4,7
Янв.-июнь/ Jan-June 2011	11,1	89,0	627,5	201,8	31,9	4,1	22,4	0,0	8,1
Янв.-сент./ Jan-Sept. 2011	778,6	136,5	1068,0	312,0	787,4	161,0	798,7	0,0	11,1
2011	799,8	190,4	1358,1	392,8	972,4	215,1	1379,2	17,0	15,6
Янв.-март/ Jan-March 2012 <sup>1</sup>	-	43,8	226,2	76,4	-	-	-	0,0	4,2
Янв.-июнь/ Jan-June 2012 <sup>1</sup>	3,6	88,0	636,2	210,2	46,9	5,0	18,8	0,0	6,8
Янв.-сент./ Jan-Sept. 2012 <sup>1</sup>	535,3	138,4	1085,0	323,7	916,0	168,4	841,1	0,0	9,9
2012 <sup>1</sup>	540,5	193,7	1382,4	387,2	1059,2	222,7	1312,7	13,3	0,6

<sup>1</sup> Данные предварительные/Preliminary data

***FOOD SECURITY AND POVERTY INFORMATION BULLETIN  
OF THE KYRGYZ REPUBLIC***

*Statistical bulletin*

*Persons responsible for publication:*

Galina Samohleb

Janybek Esengeldiev

Telephone: +996 (312) 324655,  
625591

Published: February, 2013

Format A4 60x84 1/8

Offset printing

Copies: 21

Volume 9 p.1.

Order №

*Printing and Publication Department  
Main Computing Center of the Natstatcom  
of the Kyrgyz Republic*

# NATIONAL STATISTICAL COMMITTEE OF THE KYRGYZ REPUBLIC

## QUESTIONNAIRE

### for defining user needs in statistical information

*Dear user of statistical information,*

In order to improve the quality of statistical information and meet demands of all user categories the National Statistical Committee of the Kyrgyz Republic propose you to answer our questions:

**Does this publication meet your needs?**

**What kind of indicators would you like to see in this publication?**

We would be very appreciated and grateful if you inform us about shortcomings of our work or give your comments and proposals for improvement of our activity in the field of statistics. Your opinion is very important for us and will be considered mandatory.

Please, send your wishes and recommendations to the following e-mail address: [chturdubaeva@stat.kg](mailto:chturdubaeva@stat.kg) or NSC Web site [www.stat.kg](http://www.stat.kg). (Column "feedback")

---

---

---

---

---

---

---

**Thank you in advance for the cooperation.**